

Hand shower set with cover plate FlowReduce - Matte Black

27 818 980 Product version from 3/2/2021



- COMPACT RAIN, max. flow rate 6.8 l/min (at 3 bar)
- with anti-scale system
- 3/8" shower outlet
- cover plate 240 x 60 mm
- metal shower hose 1250mm with integrated anti-twist protection
- 1/2" wall elbow
- This product can help a building meet the requirements of Green Building Rating Systems, e.g. LEED®, BREEAM®, DGNB

Intrinsic protection against back flow.

| | | |
|---|--------------------------------|--------------------|
|  | Matte Black | 27 818 980-33 0010 |
|  | Chrome | 27 818 980-00 |
|  | Chrome | 27 818 980-00 0010 |
|  | Brushed Platinum | 27 818 980-06 |
|  | Brushed Platinum | 27 818 980-06 0010 |
|  | Platinum | 27 818 980-08 |
|  | Platinum | 27 818 980-08 0010 |
|  | Dark Chrome | 27 818 980-19 |
|  | Dark Chrome | 27 818 980-19 0010 |
|  | Brushed Light Gold | 27 818 980-27 |
|  | Brushed Durabronze (23kt Gold) | 27 818 980-28 0010 |
|  | Brushed Durabronze (23kt Gold) | 27 818 980-28 |
|  | Matte Black | 27 818 980-33 |
|  | Brushed Champagne (22kt Gold) | 27 818 980-46 0010 |
|  | Brushed Champagne (22kt Gold) | 27 818 980-46 |
|  | Champagne (22kt Gold) | 27 818 980-47 0010 |
|  | Champagne (22kt Gold) | 27 818 980-47 |
|  | Brushed Chrome | 27 818 980-93 0010 |
|  | Brushed Chrome | 27 818 980-93 |
|  | Brushed Dark Platinum | 27 818 980-99 |
|  | Brushed Dark Platinum | 27 818 980-99 0010 |



Hand shower set with cover plate FlowReduce - Matte Black

27 818 980 Product version from 3/2/2021

Recommended miscellaneous

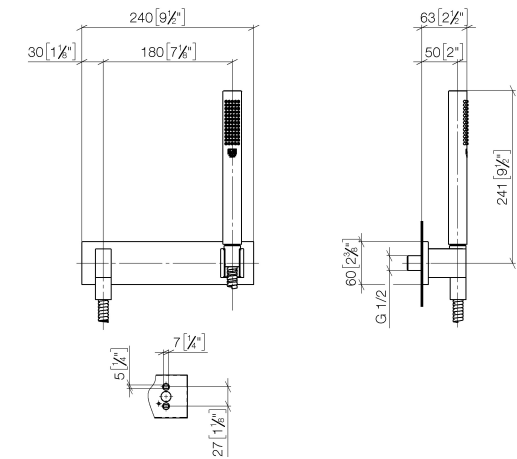


- | | |
|-------------------------------|---------------|
| Concealed wall elbow - | 35 085 970 90 |
| •max. recess depth mm | |
| •min. recess depth mm | |

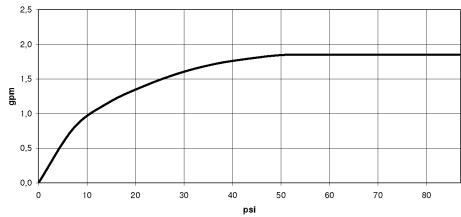
Hand shower set with cover plate FlowReduce - Matte Black

27 818 980 Product version from 3/2/2021

mm [inches]



Flow rate chart



Codes & Standards

| | | | |
|----------------|------|----------|----------|
| ASME A112.18.1 | cUPC | DIN 4109 | ISO 3822 |
|----------------|------|----------|----------|

Ü-Zeichen



Hand shower set with cover plate FlowReduce - Matte Black

27 818 980 Product version from 3/2/2021

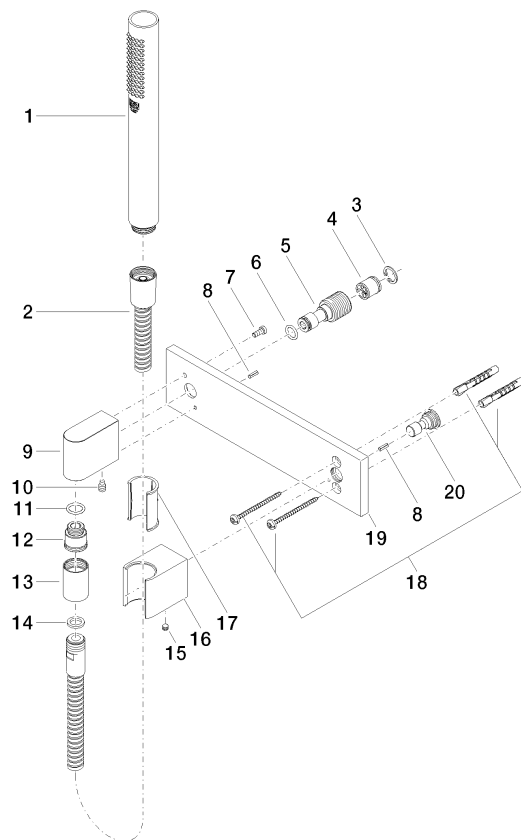
Certificates

LGA_29

IAPMO_4976

Hand shower set with cover plate FlowReduce - Matte Black

27 818 980 Product version from 3/2/2021



Spare parts list

| No. | Item Number | Name | Quantity used | Delivery time |
|-----|--------------------|---|---------------|---------------|
| 1 | 90 12 11 140 41-33 | shower | 1 | 30 |
| 2 | 90 30 02 072 00-33 | Metal shower hose 1/2" x 3/8" x 1250 mm - Matte Black | 1 | 30 |
| 3 | 09 16 01 014 90 | ring | 1 | 2 |
| 4 | 90 23 01 141 00 90 | back-flow preventer | 1 | 2 |
| 5 | 09 24 03 116 20 90 | nipple | 1 | 2 |
| 6 | 09 14 10 008 90 | seal | 1 | 2 |
| 7 | 09 30 30 054 90 | screw | 1 | 2 |
| 8 | 09 31 11 026 90 | pin | 2 | 2 |
| 9 | 09 11 03 046-33 | connection | 1 | 30 |
| 10 | 04 31 11 140 00 90 | pin | 1 | 2 |
| 11 | 90 14 10 077 00 90 | seal | 1 | 2 |
| 12 | 09 24 03 107 20 90 | nipple | 1 | 2 |
| 13 | 90 21 02 069 00-33 | cover | 1 | 30 |
| 14 | 90 14 20 026 00 90 | seal | 1 | 2 |
| 15 | 90 31 11 112 00 90 | pin | 1 | 2 |
| 16 | 09 17 20 044-33 | holder | 1 | 30 |
| 17 | 09 18 40 078 90 | sleeve | 1 | 2 |
| 18 | 05 30 31 025 00 90 | fixing set | 1 | 2 |
| 19 | 09 11 02 120-33 | plate | 1 | 30 |
| 20 | 09 24 03 073 90 | nipple | 1 | 2 |