

WATER TUBE Kneipp wall elbow with hose holder with individual rosettes -
Matte Black

SERIES-VARIOUS

27 823 979	Product version from 10/1/2023		
	<ul style="list-style-type: none"> • LAMINAR FLOW, max. flow rate 15 l/min (at 3 bar) • with volume control • rosette Ø 60 mm • holder for Kneipp hose • 1/2" wall elbow • without hose 		
	Intrinsic protection against back flow.		
	Product change as of 1.4.2023: max. flow 15 l/min		
		<div> <div></div> Matte Black </div>	27 823 979-33
		<div> <div></div> Chrome </div>	27 823 979-00
		<div> <div></div> Brushed Platinum </div>	27 823 979-06
		<div> <div></div> Platinum </div>	27 823 979-08
		<div> <div></div> Dark Chrome </div>	27 823 979-19
		<div> <div></div> Light Gold </div>	27 823 979-26
		<div> <div></div> Brushed Light Gold </div>	27 823 979-27
		<div> <div></div> Brushed Durabrass (23kt Gold) </div>	27 823 979-28
		<div> <div></div> Brushed Dark Brass </div>	27 823 979-39
		<div> <div></div> Brushed Bronze </div>	27 823 979-42
		<div> <div></div> Brushed Champagne (22kt Gold) </div>	27 823 979-46
		<div> <div></div> Champagne (22kt Gold) </div>	27 823 979-47
		<div> <div></div> Brushed Chrome </div>	27 823 979-93
		<div> <div></div> Brushed Dark Platinum </div>	27 823 979-99

WATER TUBE Kneipp wall elbow with hose holder with individual rosettes - Matte Black

SERIES-VARIOUS

27 823 979 Product version from 10/1/2023
mm [inches]



Flow rate chart

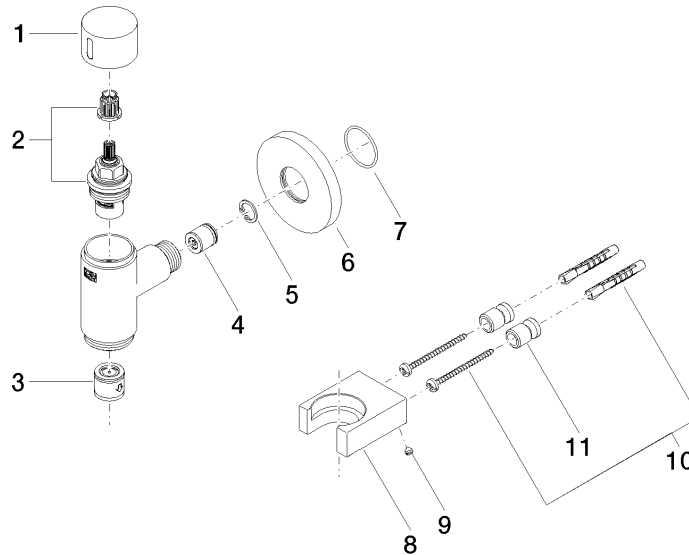


WATER TUBE Kneipp wall elbow with hose holder with individual rosettes - Matte Black

SERIES-VARIOUS

27 823 979 Product version from 10/1/2023

Parts for other
finishes can be found
here: [Chrome](#)



Spare parts list

No.	Item Number	Name	Quantity used	Delivery time
	11 08 17 20 726 90	holder	1.00	2
	1 09 20 97 021-33	handle	1.00	60
	5 09 16 01 014 90	ring	1.00	2
	4 09 23 01 046 90	back-flow preventer	1.00	2
	6 09 27 97 020-33	rosette	1.00	30
	9 09 31 11 148 90	pin	1.00	2
	3 90 23 01 045 00 90	back-flow preventer	1.00	2
	2 90 90 03 145 00 90	top	1.00	2
	10 05 17 20 726 02 90	fixing set	1.00	2
	7 09 14 10 135 90	seal	1.00	2
	8 09 17 20 023-33	holder	1.00	30