

WATER TUBE Kneipp wall elbow with hose holder with individual rosettes

FlowReduce - Platinum

SERIES SPECIFIC

27 841 979

Product version from 6/1/2024



- LAMINAR FLOW, max. flow rate 9 l/min (at 3 bar)
  - with volume control
  - rosette 60 x 60 mm
  - holder for Kneipp hose
  - 1/2" wall elbow
  - without hose
  - This product can help a building meet the requirements of Green Building Rating Systems, e.g. LEED®, BREEAM®, DGNB
- Intrinsic protection against back flow.

|   |                               |               |
|---|-------------------------------|---------------|
|    | Platinum                      | 27 841 979-08 |
|    | Chrome                        | 27 841 979-00 |
|    | Brushed Platinum              | 27 841 979-06 |
|    | Dark Chrome                   | 27 841 979-19 |
|    | Brushed Light Gold            | 27 841 979-27 |
|    | Brushed Durabrass (23kt Gold) | 27 841 979-28 |
|    | Matte Black                   | 27 841 979-33 |
|    | Brushed Champagne (22kt Gold) | 27 841 979-46 |
|    | Champagne (22kt Gold)         | 27 841 979-47 |
|   | Brushed Chrome                | 27 841 979-93 |
|  | Brushed Dark Platinum         | 27 841 979-99 |

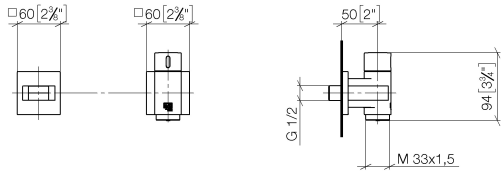
WATER TUBE Kneipp wall elbow with hose holder with individual rosettes  
FlowReduce - Platinum

SERIES SPECIFIC

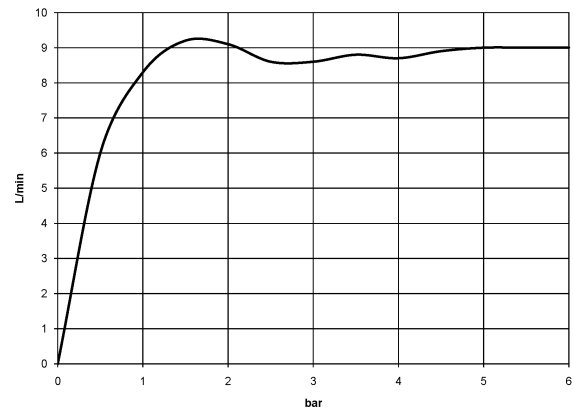
27 841 979

Product version from 6/1/2024

mm [inches]



Flow rate chart



Codes & Standards

EN 1717



## WATER TUBE Kneipp wall elbow with hose holder with individual rosettes FlowReduce - Platinum

---

SERIES SPECIFIC

27 841 979 Product version from 6/1/2024

Certificates and sustainability

---

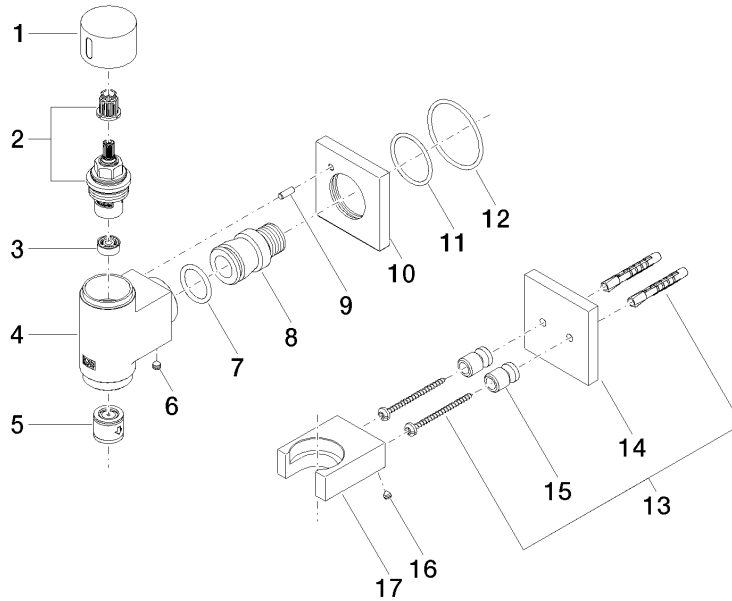
Belgaqua\_24-007-2

# WATER TUBE Kneipp wall elbow with hose holder with individual rosettes FlowReduce - Platinum

SERIES SPECIFIC

27 841 979 Product version from 6/1/2024

Parts for other  
finishes can be found  
here: [Chrome](#)



## Spare parts list

| No. | Item Number           | Name                | Quantity used | Delivery time |
|-----|-----------------------|---------------------|---------------|---------------|
|     | 16 09 31 11 148 90    | pin                 | 2.00          | 2             |
|     | 2 90 90 03 145 00 90  | top                 | 1.00          | 2             |
|     | 15 08 17 20 726 90    | holder              | 1.00          | 2             |
|     | 13 05 30 31 025 00 90 | fixing set          | 1.00          | 2             |
|     | 7 09 14 10 081 90     | seal                | 1.00          | 2             |
|     | 12 90 14 10 049 00 90 | seal                | 1.00          | 2             |
|     | 5 90 23 01 045 00 90  | back-flow preventer | 1.00          | 2             |
|     | 17 09 17 20 023-08    | holder              | 1.00          | 40            |
|     | 9 09 31 11 040 90     | pin                 | 1.00          | 2             |
|     | 10 09 27 97 021-08    | rosette             | 1.00          | 40            |
|     | 1 09 20 97 021-08     | handle              | 1.00          | 40            |
|     | 6 90 31 11 112 00 90  | pin                 | 1.00          | 2             |
|     | 14 09 27 97 022-08    | rosette             | 1.00          | 40            |
|     | 3 90 23 01 145 00 90  | flow reducer        | 1.00          | 2             |
|     | 4 09 11 03 135-08     | connection          | 1.00          | 60            |
|     | 11 09 14 10 119 90    | seal                | 1.00          | 2             |
|     | 8 09 24 03 151 90     | nipple              | 1.00          | 2             |