

WATER TUBE Kneipp wall elbow with hose holder with individual rosettes
FlowReduce - Dark Chrome

SERIES SPECIFIC

27 841 979

Product version from 6/1/2024



- LAMINAR FLOW, max. flow rate 9 l/min (at 3 bar)
 - with volume control
 - rosette 60 x 60 mm
 - holder for Kneipp hose
 - 1/2" wall elbow
 - without hose
 - This product can help a building meet the requirements of Green Building Rating Systems, e.g. LEED®, BREEAM®, DGNB
- Intrinsic protection against back flow.

| | | |
|---|-------------------------------|---------------|
|  | Dark Chrome | 27 841 979-19 |
|  | Chrome | 27 841 979-00 |
|  | Brushed Platinum | 27 841 979-06 |
|  | Platinum | 27 841 979-08 |
|  | Brushed Light Gold | 27 841 979-27 |
|  | Brushed Durabrass (23kt Gold) | 27 841 979-28 |
|  | Matte Black | 27 841 979-33 |
|  | Brushed Champagne (22kt Gold) | 27 841 979-46 |
|  | Champagne (22kt Gold) | 27 841 979-47 |
|  | Brushed Chrome | 27 841 979-93 |
|  | Brushed Dark Platinum | 27 841 979-99 |

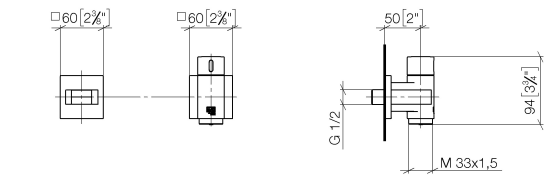
WATER TUBE Kneipp wall elbow with hose holder with individual rosettes
FlowReduce - Dark Chrome

SERIES SPECIFIC

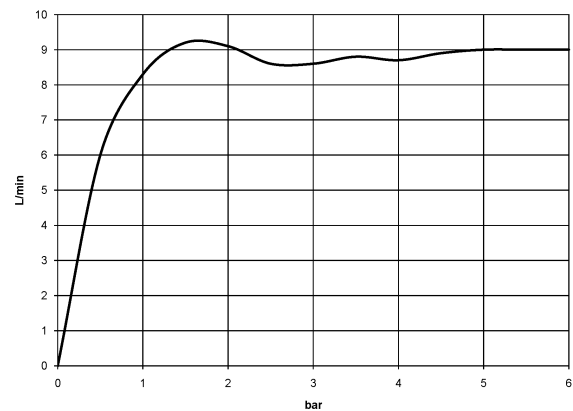
27 841 979

Product version from 6/1/2024

mm [inches]



Flow rate chart



Codes & Standards

EN 1717



WATER TUBE Kneipp wall elbow with hose holder with individual rosettes FlowReduce - Dark Chrome

SERIES SPECIFIC

27 841 979 Product version from 6/1/2024

Certificates and sustainability

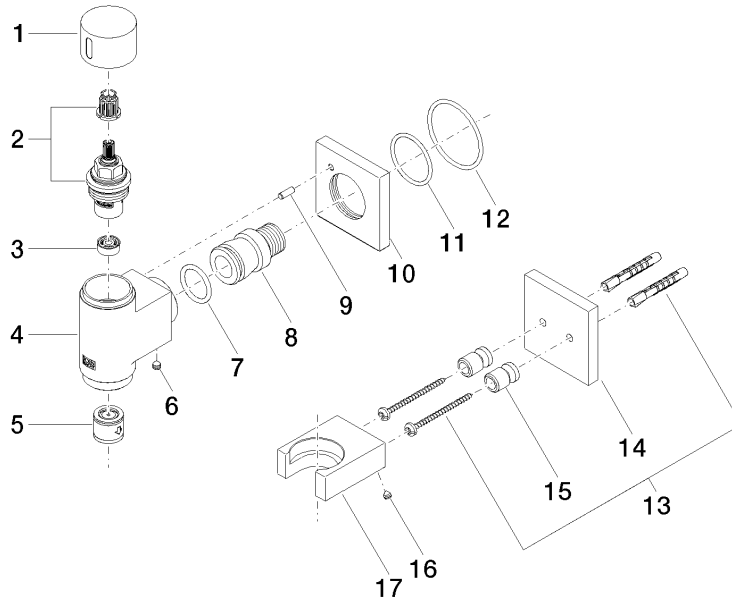
Belgaqua_24-007-2

WATER TUBE Kneipp wall elbow with hose holder with individual rosettes FlowReduce - Dark Chrome

SERIES SPECIFIC

27 841 979 Product version from 6/1/2024

Parts for other
finishes can be found
here: [Chrome](#)



Spare parts list

| No. | Item Number | Name | Quantity used | Delivery time |
|-----|-----------------------|---------------------|---------------|---------------|
| | 6 90 31 11 112 00 90 | pin | 1.00 | 2 |
| | 2 90 90 03 145 00 90 | top | 1.00 | 2 |
| | 7 09 14 10 081 90 | seal | 1.00 | 2 |
| | 4 09 11 03 135-19 | connection | 1.00 | 60 |
| | 10 09 27 97 021-19 | rosette | 1.00 | 20 |
| | 15 08 17 20 726 90 | holder | 1.00 | 2 |
| | 3 90 23 01 145 00 90 | flow reducer | 1.00 | 2 |
| | 9 09 31 11 040 90 | pin | 1.00 | 2 |
| | 8 09 24 03 151 90 | nipple | 1.00 | 2 |
| | 17 09 17 20 023-19 | holder | 1.00 | 20 |
| | 12 90 14 10 049 00 90 | seal | 1.00 | 2 |
| | 5 90 23 01 045 00 90 | back-flow preventer | 1.00 | 2 |
| | 13 05 30 31 025 00 90 | fixing set | 1.00 | 2 |
| | 1 09 20 97 021-19 | handle | 1.00 | 20 |
| | 16 09 31 11 148 90 | pin | 2.00 | 2 |
| | 11 09 14 10 119 90 | seal | 1.00 | 2 |
| | 14 09 27 97 022-19 | rosette | 1.00 | 20 |