



28 504 832    Product version from 1/1/2023



- 180-210mm projection
- ball-joint pivotable through 30°
- normal flow
- with anti-scale system
- spray head Ø 100mm
- rosette Ø 55 mm
- 1/2" connection
- max. flow 7.6 l/min
- rosette Ø 55 mm
- WRAS

|   |            |               |
|---|------------|---------------|
|  | Soft Black | 28 504 832-69 |
|  | Chrome     | 28 504 832-00 |

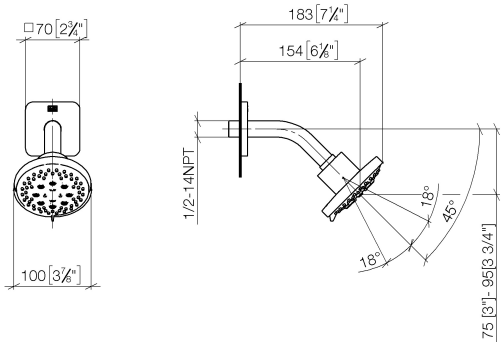
Recommended miscellaneous

Concealed wall elbow -

35 085 970 90



mm [inches]



Flow rate chart



### Codes & Standards

|          |          |                        |                             |
|----------|----------|------------------------|-----------------------------|
| DIN 4109 | ISO 3822 | Scottish Water Byelaws | UK Water Supply Regulations |
|----------|----------|------------------------|-----------------------------|

Ü-Zeichen



DORNBRACHT YARRE Shower head - Soft Black

DORNBRACHT  
YARRE

28 504 832 Product version from 1/1/2023

Certificates and sustainability

LGA\_28

WRAS\_240202



Spare parts list

| No. | Item Number        | Name       | Quantity used | Delivery time |
|-----|--------------------|------------|---------------|---------------|
| 1   | 90 27 83 016 00-69 | rosette    | 1.00          | 2             |
| 2   | 90 11 03 011 10-69 | connection | 1.00          | 2             |