


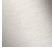


LULU Shower head FlowReduce - Brushed Platinum

28 508 710 Product version from 5/15/2020



- 200mm projection
- ball-joint pivotable through 30°
- Three settings: PURIFY RAIN, COMPACT SOFT FLOW, COMPACT AQUAPRESSURE FLOW, max. flow rate 6.8 l/min (at 3 bar)
- with anti-scale system
- spray head Ø 92mm
- rosette 78 x 55 mm
- 1/2" connection
- Function from: 5 l/min
- This product can help a building meet the requirements of Green Building Rating Systems, e.g. LEED®, BREEAM®, DGNB

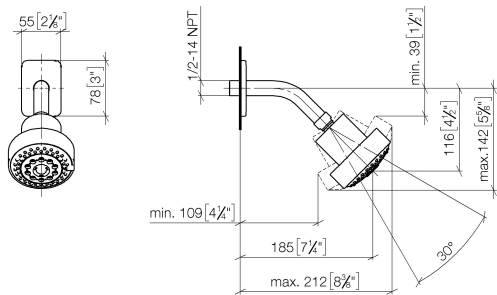
	Brushed Platinum	28 508 710-06 0010
	Chrome	28 508 710-00 0010
	Chrome	28 508 710-00
	Brushed Platinum	28 508 710-06



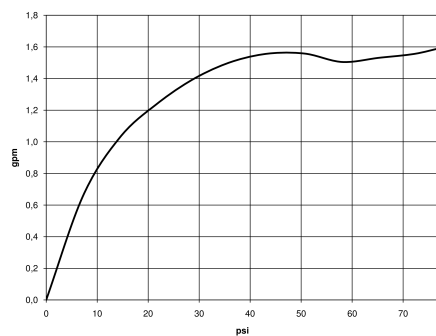
LULU Shower head FlowReduce - Brushed Platinum

28 508 710 Product version from 5/15/2020

mm [inches]



Flow rate chart



Codes & Standards

ASME A112.18.1

cUPC

DIN 4109

ISO 3822

Ü-Zeichen



LULU Shower head FlowReduce - Brushed Platinum

28 508 710 Product version from 5/15/2020

Certificates

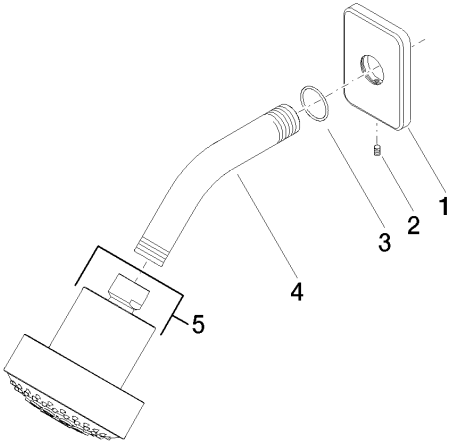
LGA_38

IAPMO_4976

LULU Shower head FlowReduce - Brushed Platinum

28 508 710 Product version from 5/15/2020

Parts for other
finishes can be found
here: [Chrome](#)



Spare parts list

No.	Item Number	Name	Quantity used	Delivery time
1	09 27 71 027-06	rosette	1	10
2	09 31 11 048 90	pin	1	2
3	09 14 10 098 90	seal	1	2
4	09 11 03 011-06	connection	1	10
5	04 12 11 110 30-06	shower	1	10