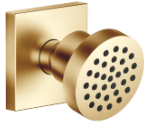


Body spray without volume control FlowReduce - Brushed Durabronss (23kt Gold)

28 518 782 Product version from 3/10/2014



- spray head Ø 55mm
- ball-joint pivotable through 25° (in any direction)
- rain flow
- anti-scale system
- rosette 60 x 60 mm
- 1/2" connection
- max. flow 5 l/min
- WRAS
- This product can help a building meet the requirements of Green Building Rating Systems, e.g. LEED®, BREEAM®, DGNB

	Brushed Durabronss (23kt Gold)	28 518 782-28
	Chrome	28 518 782-00
	Brushed Platinum	28 518 782-06
	Platinum	28 518 782-08
	Dark Chrome	28 518 782-19
	Brushed Light Gold	28 518 782-27
	Matte Black	28 518 782-33
	Brushed Champagne (22kt Gold)	28 518 782-46
	Champagne (22kt Gold)	28 518 782-47
	Brushed Chrome	28 518 782-93
	Brushed Dark Platinum	28 518 782-99

Recommended miscellaneous

**Concealed wall elbow -**

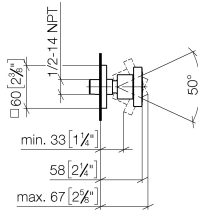
35 085 970 90



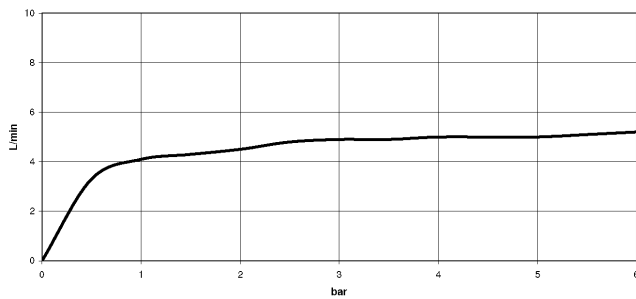
- max. recess depth mm
- min. recess depth mm

## Body spray without volume control FlowReduce - Brushed Durabron (23kt Gold)

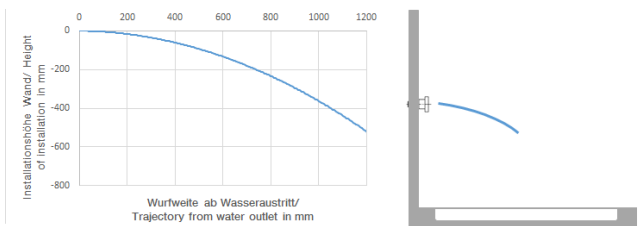
28 518 782 Product version from 3/10/2014  
mm [inches]



Flow rate chart



Trajectory diagram



### Codes & Standards

DIN 4109

ISO 3822

Scottish Water  
Byelaws

UK Water Supply  
Regulations

Ü-Zeichen



Body spray without volume control FlowReduce - Brushed Durabronz (23kt Gold)

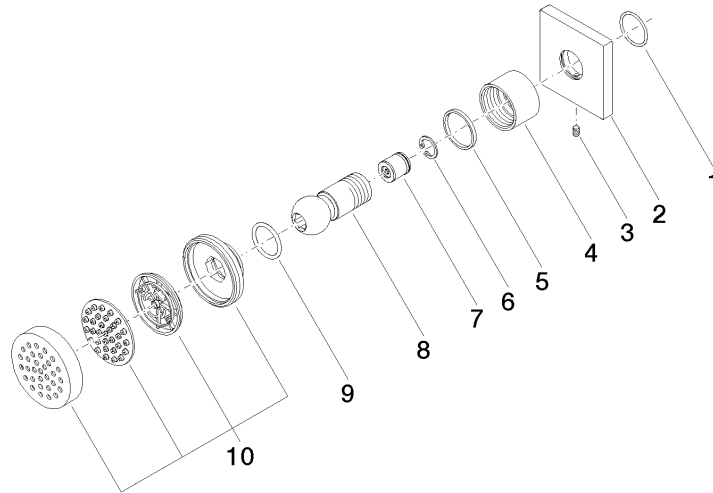
28 518 782    Product version from 3/10/2014

Certificates

WRAS_1809	LGA_38	WRAS_240602
-----------	--------	-------------

## Body spray without volume control FlowReduce - Brushed Durabronz (23kt Gold)

28 518 782 Product version from 3/10/2014



### Spare parts list

No.	Item Number	Name	Quantity used	Delivery time
1	09 14 10 098 90	seal	1	2
2	09 27 98 003-28	rosette	1	20
3	09 31 11 048 90	pin	1	2
4	09 23 30 026-28	nut	1	20
5	09 14 15 010 90	ring	1	2
6	09 16 01 014 90	ring	1	2
7	09 23 01 048 90	back-flow preventer	1	2
8	09 21 40 016-28	connection	1	20
9	09 14 10 015 90	seal	1	2
10	90 12 05 027 00-28	casing ( completely )	1	20