

## Body spray without volume control - Dark Chrome

IMO

28 528 782



- spray head Ø 55mm
- ball-joint pivotable through 25° (in any direction)
- HORIZONTAL RAIN, max. flow rate 7 l/min (at 3 bar)
- anti-scale system
- rosette 60 x 60 mm
- 1/2" connection

Fits: IMO, MEM, CL.1, CYO

|  |                                |               |
|--|--------------------------------|---------------|
|   | Dark Chrome                    | 28 528 782-19 |
|   | Chrome                         | 28 528 782-00 |
|   | Brushed Platinum               | 28 528 782-06 |
|   | Platinum                       | 28 528 782-08 |
|   | Brushed Durabronze (23kt Gold) | 28 528 782-28 |
|   | Matte Black                    | 28 528 782-33 |
|   | Brushed Champagne (22kt Gold)  | 28 528 782-46 |
|   | Champagne (22kt Gold)          | 28 528 782-47 |
|   | Brushed Chrome                 | 28 528 782-93 |
|  | Brushed Dark Platinum          | 28 528 782-99 |

### Recommended miscellaneous



#### Concealed wall elbow -

35 085 970 90

- max. recess depth 163 mm
- min. recess depth 90 mm

28 528 782

mm [inches]

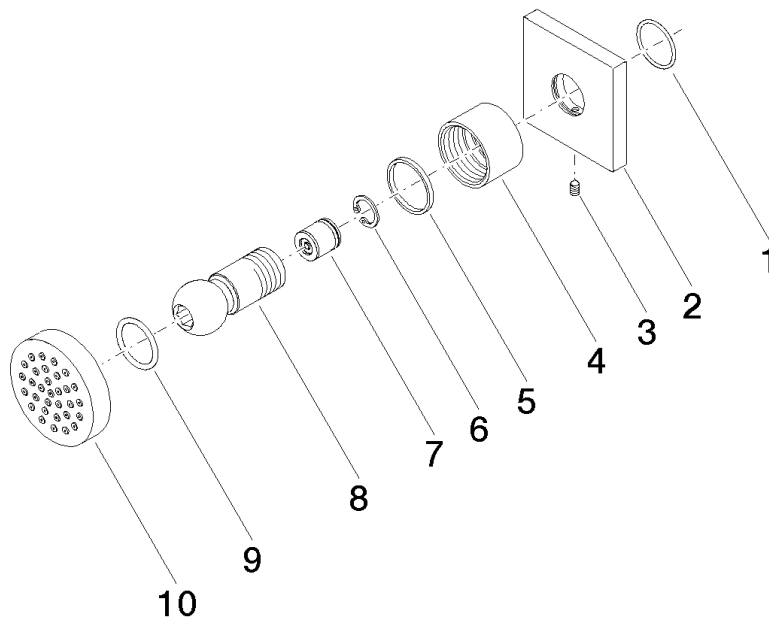


Flow rate chart



Certificates

LGA\_38652.



## Spare parts list

| No. | Item Number        | Name                  | Quantity used | Delivery time |
|-----|--------------------|-----------------------|---------------|---------------|
| 1   | 09 14 10 098 90    | seal                  | 1             | 2             |
| 2   | 09 27 98 003-19    | rosette               | 1             | 60            |
| 3   | 09 31 11 048 90    | pin                   | 1             | 2             |
| 4   | 09 23 30 026-19    | nut                   | 1             | 20            |
| 5   | 09 14 15 010 90    | ring                  | 1             | 2             |
| 6   | 09 16 01 014 90    | ring                  | 1             | 2             |
| 7   | 90 23 01 147 00 90 | back-flow preventer   | 1             | 2             |
| 8   | 09 21 40 016-19    | connection            | 1             | 20            |
| 9   | 09 14 10 015 90    | seal                  | 1             | 2             |
| 10  | 90 12 05 027 00-19 | casing ( completely ) | 1             | 20            |