

Rain shower with wall fixing FlowReduce 220 mm - Champagne (22kt Gold)

SERIES SPECIFIC

28 647 970 Product version from 4/1/2025





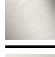








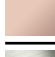



- rain shower Ø 220 mm
- Rain shower material: metal
- PURE RAIN, max. flow rate 14 l/min (at 3 bar)
- Function from: 7 l/min
- quick clearing
- with anti-scale system

Technical data:

- 450mm projection
- rosette Ø 60 mm
- 1/2" connection

Notes:

- This product can help a building meet the requirements of Green Building Rating Systems, e.g. LEED®, BREEAM®, DGNB

	Champagne (22kt Gold)	28 647 970-47
	Chrome	28 647 970-00
	Brushed Platinum	28 647 970-06
	Platinum	28 647 970-08
	Dark Chrome	28 647 970-19
	Light Gold	28 647 970-26
	Brushed Light Gold	28 647 970-27
	Brushed Durabronze (23kt Gold)	28 647 970-28
	Matte Black	28 647 970-33
	Brushed Dark Brass	28 647 970-39
	Brushed Bronze	28 647 970-42
	Brushed Champagne (22kt Gold)	28 647 970-46
	Cyprus	28 647 970-49
	Brushed Chrome	28 647 970-93
	Brushed Dark Platinum	28 647 970-99

Required miscellaneous

Concealed wall elbow -

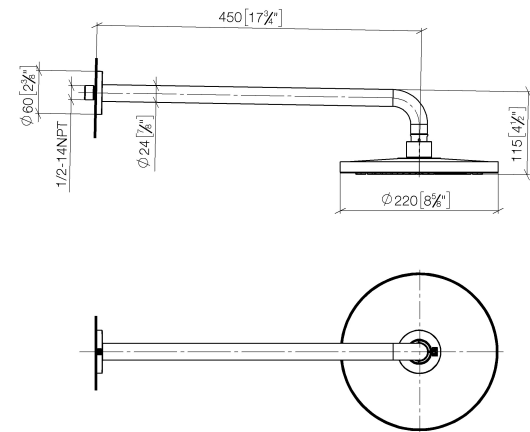
35 085 970 90



Rain shower with wall fixing FlowReduce 220 mm - Champagne (22kt Gold) SERIES SPECIFIC

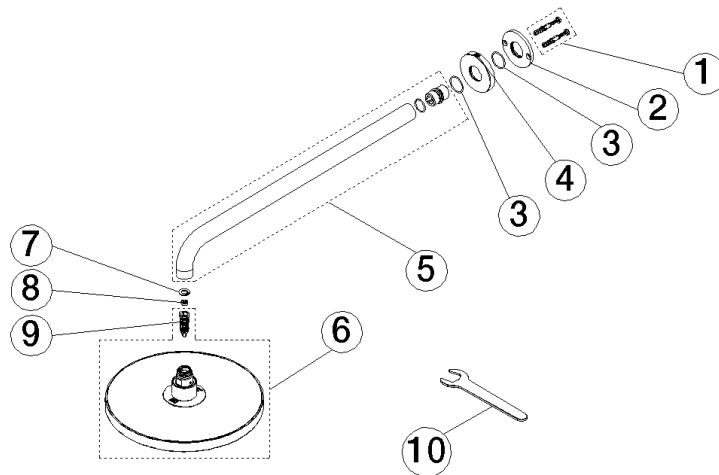
28 647 970 Product version from 4/1/2025

mm [inches]



Flow rate chart





Spare parts list

No.	Item Number	Name	Quantity used	Delivery time
9	90 18 40 278 00 90	insert	1.00	2
10	90 30 09 069 00 90	key	1.00	2
1	04 30 31 032 00 90	fixing set	1.00	2
3	09 14 10 150 90	seal	2.00	2
7	09 16 01 014 90	ring	1.00	2
5	90 11 03 070 00-47	pipe	1.00	30
8	09 23 01 136 90	flow reducer	1.00	2
4	09 27 97 015-47	rosette	1.00	30
2	09 17 20 120 90	holder	1.00	2
6	90 12 05 094 00-47	shower	1.00	30