




EDITION PRO Rain shower with wall fixing 220 mm - Brushed Chrome

28 649 626



- 450mm projection
- rain flow
- with anti-scale system
- rain shower Ø 220 mm
- rosette Ø 60 mm
- 1/2" connection
- max. flow 14 l/min
- quick clearing
- WRAS 2212012

|  |                |               |
|--|----------------|---------------|
|  | Brushed Chrome | 28 649 626-93 |
|  | Chrome         | 28 649 626-00 |
|  | Matte Black    | 28 649 626-33 |

Required miscellaneous



- Concealed wall elbow -

•min. recess depth 90 mm

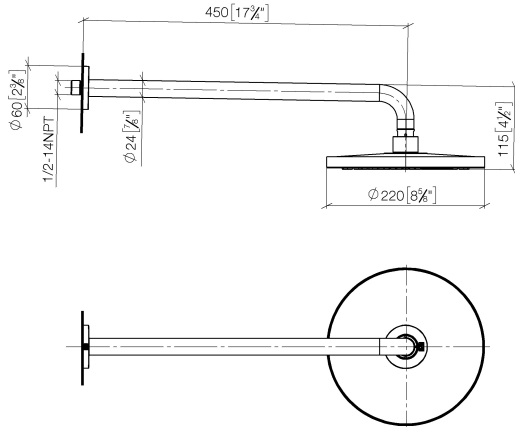
•max. recess depth 163 mm

35 085 970 90

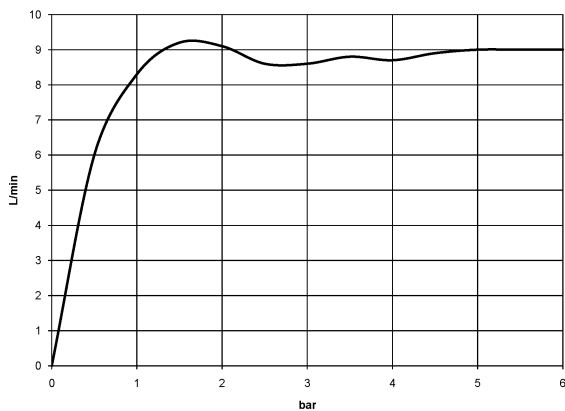
## EDITION PRO Rain shower with wall fixing 220 mm - Brushed Chrome

28 649 626

mm [inches]



### Flow rate chart



### Codes & Standards

DIN 4109

ISO 3822

Scottish Water  
Byelaws

UK Water Supply  
Regulations

### Ü-Zeichen



## EDITION PRO Rain shower with wall fixing 220 mm - Brushed Chrome

---

28 649 626

### Certificates

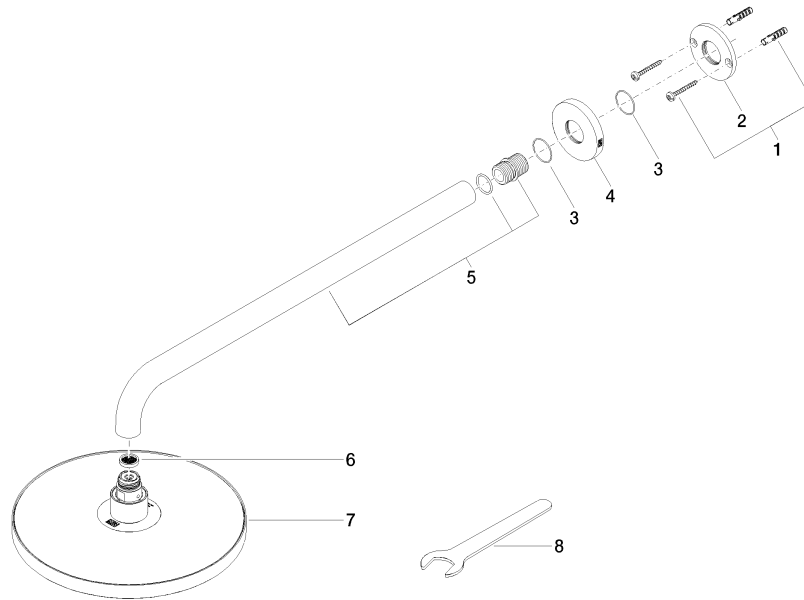
---

LGA\_38

WRAS\_2212

## EDITION PRO Rain shower with wall fixing 220 mm - Brushed Chrome

28 649 626





EDITION PRO Rain shower with wall fixing 220 mm - Brushed Chrome

28 649 626

Spare parts list

| No. | Item Number        | Name       | Quantity used | Delivery time |
|-----|--------------------|------------|---------------|---------------|
|     | 04 30 31 032 00 90 | fixing set | 8             | 2             |