

SERIES SPECIFIC Rain shower with ceiling fixing 220 mm - Brushed Light Gold

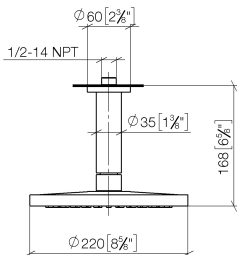
SERIES SPECIFIC

28 665 970	Product version from 4/1/2025		
	<ul style="list-style-type: none"> rain shower Ø 220 mm Material rain shower: plastic PURE RAIN, max. flow rate 14 l/min (at 3 bar) Function from: 7 l/min quick clearing with anti-scale system 		
	<p>Technical data:</p> <ul style="list-style-type: none"> rosette Ø 60 mm 1/2" connection <p>Notes:</p> <ul style="list-style-type: none"> This product can help a building meet the requirements of Green Building Rating Systems, e.g. LEED®, BREEAM®, DGNB 		
		<div> <div></div> <div>Brushed Light Gold</div> <div>28 665 970-27</div> </div>	
		<div> <div></div> <div>Chrome</div> <div>28 665 970-00</div> </div>	
		<div> <div></div> <div>Dark Chrome</div> <div>28 665 970-19</div> </div>	
		<div> <div></div> <div>Light Gold</div> <div>28 665 970-26</div> </div>	
		<div> <div></div> <div>Matte Black</div> <div>28 665 970-33</div> </div>	
		<div> <div></div> <div>Brushed Bronze</div> <div>28 665 970-42</div> </div>	
		<div> <div></div> <div>Brushed Chrome</div> <div>28 665 970-93</div> </div>	
		<div> <div></div> <div>Brushed Dark Platinum</div> <div>28 665 970-99</div> </div>	

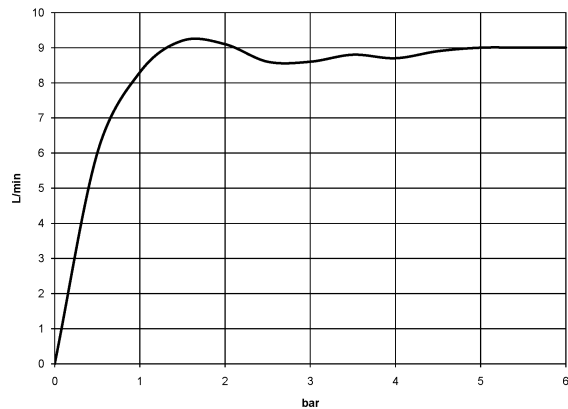
Required miscellaneous

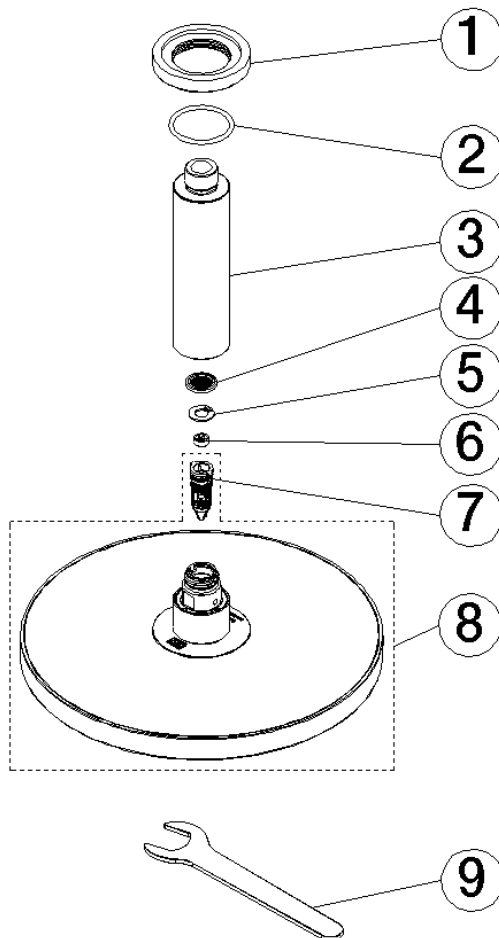
	Concealed wall elbow -	35 085 970 90

28 665 970 Product version from 4/1/2025
mm [inches]



Flow rate chart





Spare parts list

No.	Item Number	Name	Quantity used	Delivery time
1	09 27 22 040-27	rosette	1.00	60
8	90 12 05 093 00-27	shower	1.00	30
5	09 16 01 014 90	ring	1.00	2
3	09 11 03 080-27	connection	1.00	60
7	04 18 40 276 00 90	insert	1.00	2
9	90 30 09 069 00 90	key	1.00	2
4	09 23 01 039 90	sieve	1.00	2
6	09 23 01 136 90	flow reducer	1.00	2
2	09 14 10 141 90	seal	1.00	2