

SERIES SPECIFIC Rain shower with wall fixing 300 mm - Matte Black

SERIES SPECIFIC

28 675 970 Product version from 4/1/2025



- rain shower Ø 300 mm
- Material rain shower: plastic
- PURE RAIN, max. flow rate 14 l/min (at 3 bar)
- Function from: 10 l/min
- quick clearing
- with anti-scale system

Technical data:

- 450mm projection
- rosette Ø 60 mm
- 1/2" connection

Notes:

- This product can help a building meet the requirements of Green Building Rating Systems, e.g. LEED®, BREEAM®, DGNB

	Matte Black	28 675 970-33
	Chrome	28 675 970-00
	Dark Chrome	28 675 970-19
	Light Gold	28 675 970-26
	Brushed Light Gold	28 675 970-27
	Brushed Bronze	28 675 970-42
	Brushed Chrome	28 675 970-93
	Brushed Dark Platinum	28 675 970-99

Required miscellaneous

Concealed wall elbow - 35 085 970 90



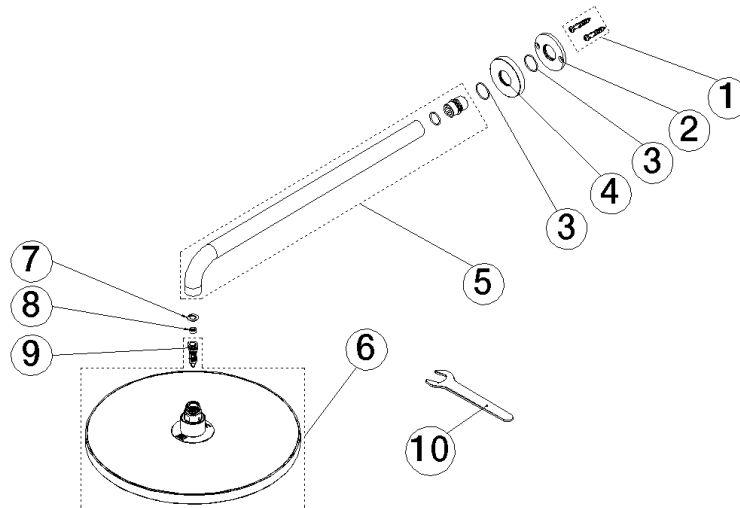
28 675 970 Product version from 4/1/2025

mm [inches]



**Flow rate chart**





## Spare parts list

No.	Item Number	Name	Quantity used	Delivery time
7	09 16 01 014 90	ring	1.00	2
6	90 12 05 101 00-33	shower	1.00	-
Spare part can no longer be ordered, please order the replacement item				
8	09 23 01 101 90	flow reducer	1.00	2
3	09 14 10 150 90	seal	2.00	2
2	09 17 20 120 90	holder	1.00	2
4	09 27 97 015-33	rosette	1.00	30
1	04 30 31 032 00 90	fixing set	1.00	2
9	04 18 40 276 00 90	insert	1.00	2
10	90 30 09 069 00 90	key	1.00	2
5	90 11 03 070 00-33	pipe	1.00	30