

LULU Rain shower with wall fixing 300 x 240 mm - Brushed Durabrand (23kt Gold)



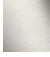


LULU

28 786 710



- 450mm projection
- rain shower 300 x 240mm
- PURE RAIN, max. flow rate 20 l/min (at 3 bar)
- Function from: 12 l/min
- rosette 78 x 60 mm
- 1/2" connection
- with anti-scale system
- quick clearing
- WRAS 2212012

Product change as of 1st April 2024: max. flow 20l/min

	Brushed Durabrand (23kt Gold)	28 786 710-28
	Chrome	28 786 710-00
	Brushed Platinum	28 786 710-06
	Platinum	28 786 710-08
	Brushed Dark Platinum	28 786 710-99

Recommended miscellaneous



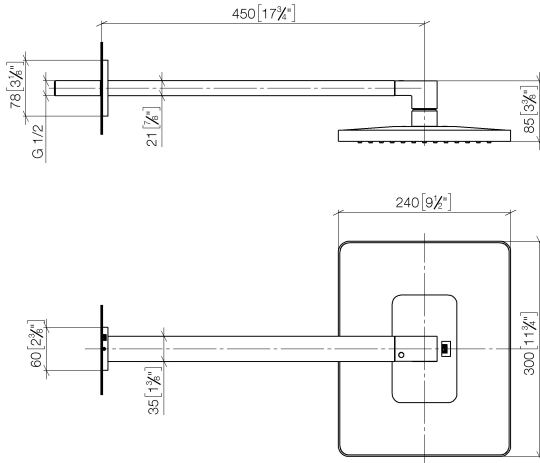
- Concealed wall elbow -**

- max. recess depth 163 mm
 - min. recess depth 90 mm
- 35 085 970 90

LULU Rain shower with wall fixing 300 x 240 mm - Brushed Durabronz (23kt Gold)

LULU

28 786 710
mm [inches]



Flow rate chart



Codes & Standards

DIN 4109

ISO 3822

Scottish Water
Byelaws

UK Water Supply
Regulations

Ü-Zeichen



LULU Rain shower with wall fixing 300 x 240 mm - Brushed Durabronss (23kt Gold)

LULU

28 786 710
Certificates

WRAS_2212

LGA_29

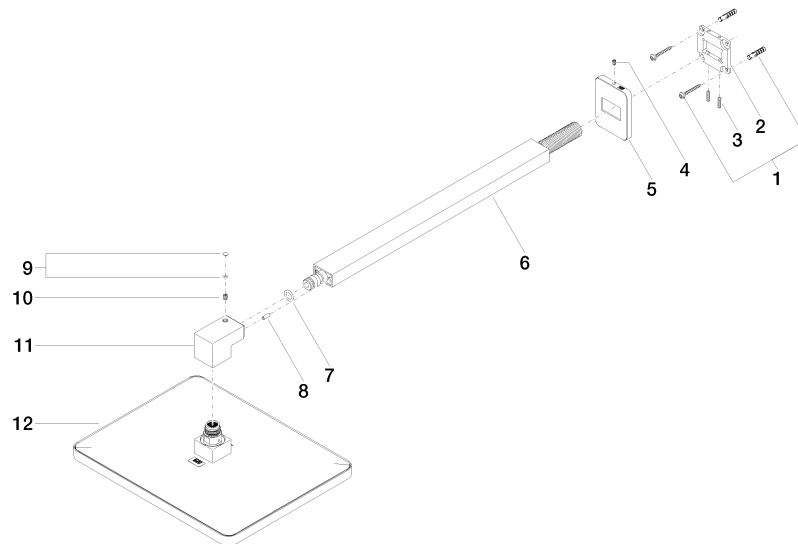
LGA_38

LULU Rain shower with wall fixing 300 x 240 mm - Brushed Durabronze (23kt Gold)

LULU

28 786 710

Product version from 3/13/2017





LULU Rain shower with wall fixing 300 x 240 mm - Brushed Durabrand (23kt Gold)

LULU

28 786 710

Spare parts list

Product version from 3/13/2017

No.	Item Number	Name	Quantity used	Delivery time
	04 30 31 032 00 90	fixing set	13	2