



LULU Rain shower with ceiling fixing 300 x 240 mm - Brushed Platinum
LULU

28 796 710
Product version from 3/13/2017



- rain shower 300 x 240mm
- PURE RAIN, max. flow rate 20 l/min (at 3 bar)
- Function from: 12 l/min
- distance between ceiling and lower edge of the shower 165mm
- rosette 78 x 55, as required
- 1/2" connection
- with anti-scale system
- quick clearing
- WRAS

Product change as of 1st April 2024: max. flow 20l/min

	Brushed Platinum	28 796 710-06
	Chrome	28 796 710-00

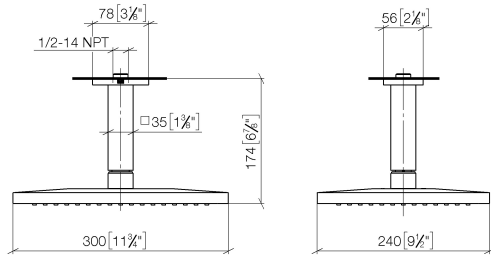
Recommended miscellaneous



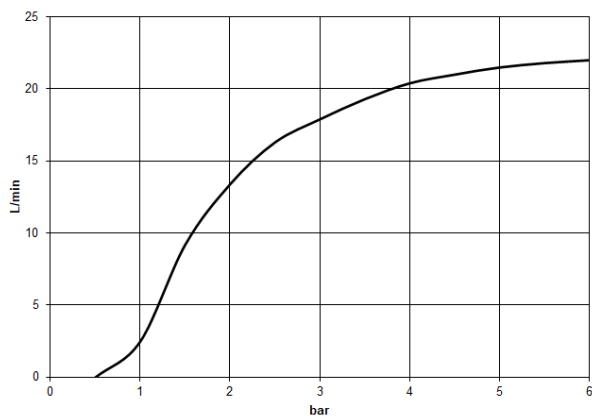
- Concealed wall elbow -

35 085 970 90
- max. recess depth 163 mm
 - min. recess depth 90 mm

mm [inches]



Flow rate chart



Codes & Standards

DIN 4109

ISO 3822

Scottish Water
Byelaws

UK Water Supply
Regulations

Ü-Zeichen



LULU Rain shower with ceiling fixing 300 x 240 mm - Brushed Platinum

LULU

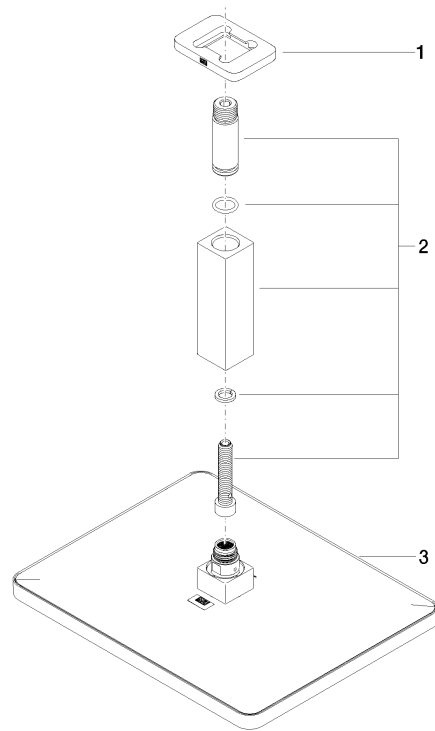
28 796 710 Product version from 3/13/2017

Certificates and sustainability

LGA_29

WRAS_2212

LGA_38



Spare parts list

No.	Item Number	Name	Quantity used	Delivery time
3	04 12 05 062 00-06	shower	1.00	10
1	09 27 71 020-06	rosette	1.00	10
2	90 11 10 092 00-06	connection	1.00	10