

## MADISON Two-way diverter for bath rim or tile edge installation - Brushed Dark Platinum

---

MADISON

29 140 360

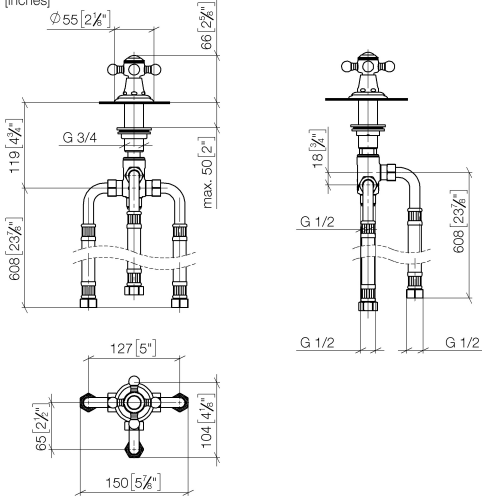


- automatic bath/shower diverter
- hole diameter 32 mm
- rosette Ø 55 mm
- 1/2" connection
- max. flow 64.9 l/min at 3 bar flow pressure

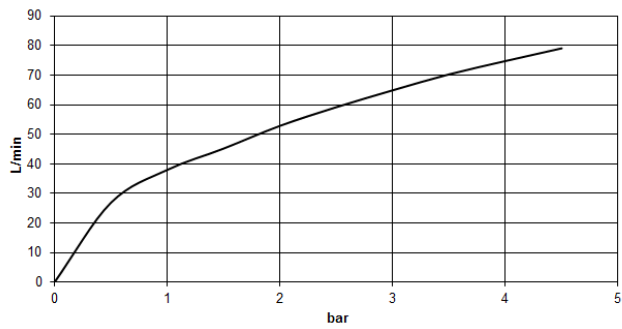
MADISON Two-way diverter for bath rim or tile edge installation - Brushed Dark Platinum

MADISON

29 140 360  
mm [inches]



Flow rate chart



Codes & Standards

|                |      |          |          |
|----------------|------|----------|----------|
| ASME A112.18.1 | cUPC | DIN 4109 | ISO 3822 |
|----------------|------|----------|----------|

Ü-Zeichen



## MADISON Two-way diverter for bath rim or tile edge installation - Brushed Dark Platinum

MADISON

---

29 140 360

Certificates

---

LGA\_29

IAPMO\_4976

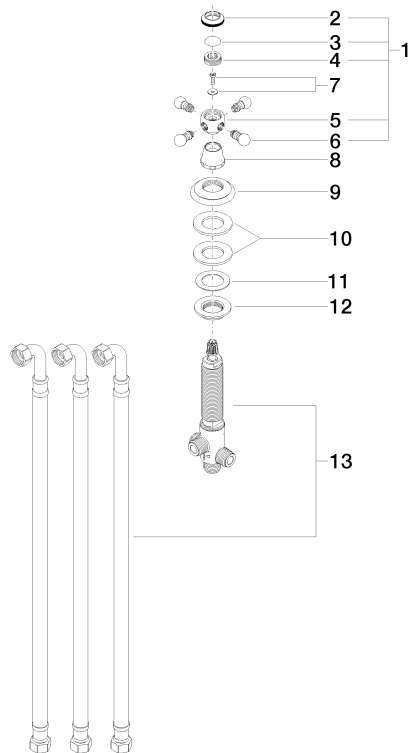
# MADISON Two-way diverter for bath rim or tile edge installation - Brushed Dark Platinum

MADISON

29 140 360

Product version up to 6/30/2015

**Product version from 6/30/2015**





MADISON Two-way diverter for bath rim or tile edge installation - Brushed Dark  
Platinum

MADISON

29 140 360

Spare parts list

Product version up to 6/30/2015

Product version from 6/30/2015

| No. | Item Number        | Name   | Quantity used | Delivery time |
|-----|--------------------|--------|---------------|---------------|
|     | 04 20 36 002 08-99 | handle | 16            | 30            |