

META Two-way diverter for bath rim or tile edge installation - Brushed Champagne (22kt Gold)

META

29 140 660 Product version from 7/1/2023



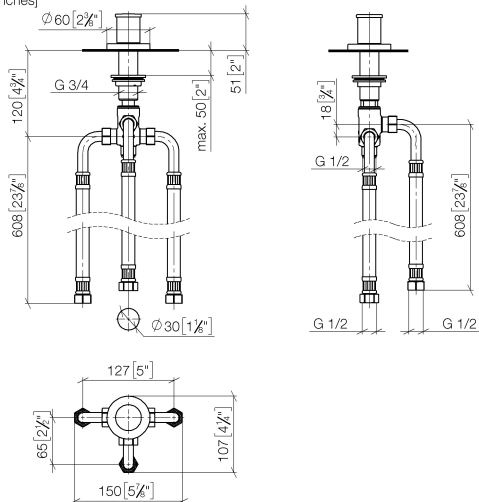
- automatic bath/shower diverter
- hole diameter 32 mm
- rosette Ø 60 mm
- 1/2" connection
- max. flow 64.9 l/min at 3 bar flow pressure
- WRAS

	Brushed Champagne (22kt Gold)	29 140 660-46
	Chrome	29 140 660-00
	Brushed Platinum	29 140 660-06
	Dark Chrome	29 140 660-19
	Light Gold	29 140 660-26
	Brushed Light Gold	29 140 660-27
	Matte Black	29 140 660-33
	Brushed Dark Brass	29 140 660-39
	Brushed Bronze	29 140 660-42
	Champagne (22kt Gold)	29 140 660-47
	Brushed Chrome	29 140 660-93
	Brushed Dark Platinum	29 140 660-99

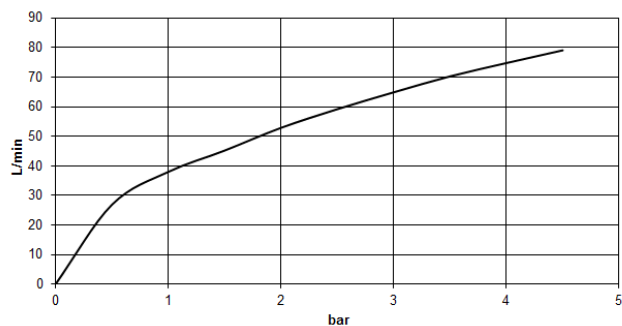
META Two-way diverter for bath rim or tile edge installation - Brushed Champagne (22kt Gold)

META

29 140 660 Product version from 7/1/2023
mm [inches]



Flow rate chart



Codes & Standards

ASME A112.18.1	cUPC	DIN 4109	ISO 3822
----------------	------	----------	----------

Ü-Zeichen



META Two-way diverter for bath rim or tile edge installation - Brushed Champagne (22kt Gold)

META

29 140 660 Product version from 7/1/2023

Certificates and sustainability

LGA_29

IAPMO_4976

META Two-way diverter for bath rim or tile edge installation - Brushed Champagne (22kt Gold)

META

29 140 660 Product version from 7/1/2023

Parts for other
finishes can be found
here: [Chrome](#)



Spare parts list

No.	Item Number	Name	Quantity used	Delivery time
8	09 14 40 002 90	seal	1.00	2
7	09 14 05 014 90	seal	1.00	2
3	09 20 71 002-46	handle	1.00	30
2	90 30 30 014 00 90	screw	1.00	2
1	09 20 71 003-46	handle	1.00	30
4	09 16 01 012-46	ring	1.00	30
10	90 17 09 051 00 90	diverter	1.00	2
5	09 27 66 004-46	rosette	1.00	60
9	09 23 10 004 90	nut	1.00	2
6	09 14 10 030 90	seal	1.00	2