



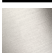




IMO Two-hole basin mixer with high spout without pop-up waste - Dark Chrome

IMO

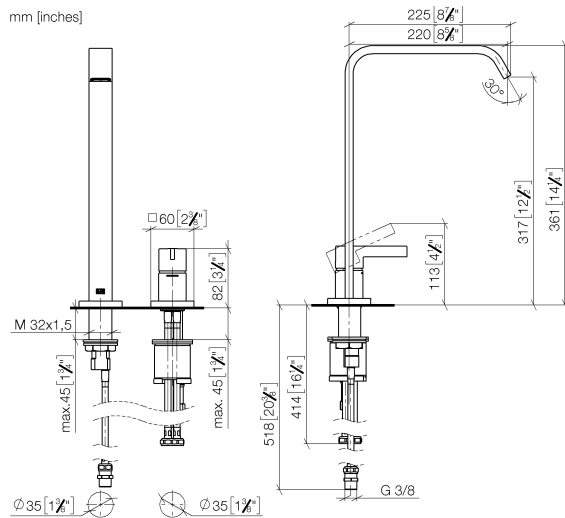
29 218 671    Product version from 4/1/2024



- 220mm projection
- fixed spout
- rectangular, air-enriched flow
- height of mixer 361 mm
- height up to aerator 317 mm
- hole diameter spout 35 mm
- hole diameter valve 35 mm
- 1x screw-in M 10 x 1 pressure hose, leak-tested
- 2x screw-in M 10 x 1 pressure hose, leak-tested
- max. flow 4.6 l/min
- lead-free
- This product can help a building meet the requirements of Green Building Rating Systems, e.g. LEED®, BREEAM®, DGNB

	Dark Chrome	29 218 671-19
	Chrome	29 218 671-00
	Brushed Platinum	29 218 671-06
	Brushed Light Gold	29 218 671-27
	Matte Black	29 218 671-33
	Brushed Chrome	29 218 671-93
	Brushed Dark Platinum	29 218 671-99

29 218 671 Product version from 4/1/2024



Flow rate chart



## Codes & Standards

DIN 4109

ISO 3822

Scottish Water  
Byelaws

UK Water Supply  
Regulations

Ü-Zeichen



## IMO Two-hole basin mixer with high spout without pop-up waste - Dark Chrome

---

IMO

29 218 671 Product version from 4/1/2024

### Certificates and sustainability

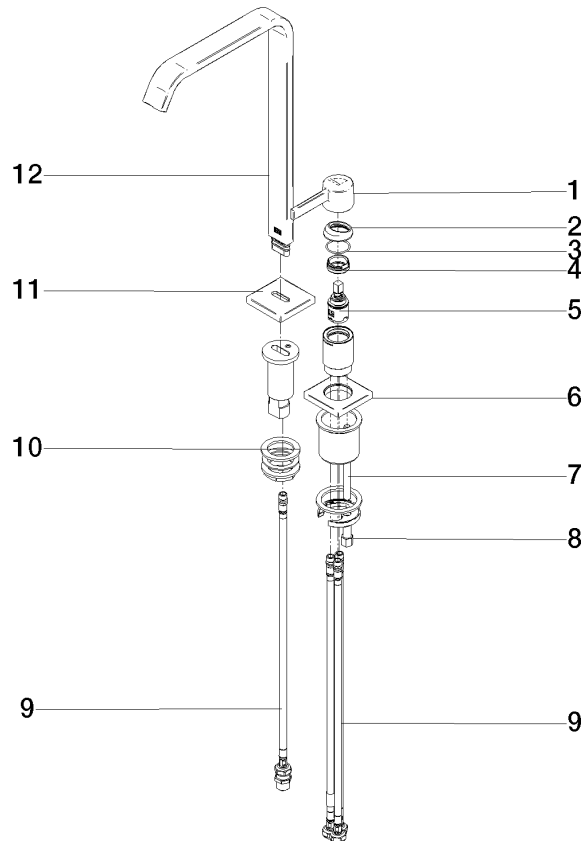
---

LGA\_38

WRAS\_250402

29 218 671 Product version from 4/1/2024

Parts for other  
finishes can be found  
here: [Chrome](#)



## Spare parts list

No.	Item Number	Name	Quantity used	Delivery time
5	90 15 05 042 00 90	cartridge	1.00	2
9	04 30 04 104 00 90	hose	4.00	2
3	09 14 10 091 90	seal	1.00	2
7	09 31 11 012 90	pin	1.00	2
6	90 27 67 019 00-19	rosette	1.00	-
Spare part can no longer be ordered, please order the replacement item				
1	90 20 67 029 00-19	handle	1.00	-
Spare part can no longer be ordered, please order the replacement item				
4	09 24 04 266 90	nut	1.00	2
12	90 28 22 419 00-19	spout	1.00	20
10	04 23 10 009 01 90	fixing set	1.00	2
8	04 30 11 038 92 90	fixing set	1.00	2
11	09 27 78 034-19	rosette	1.00	20
2	09 28 30 026-19	cover	1.00	60