

META Single-lever bath mixer for bath rim or tile edge installation - Brushed Champagne (22kt Gold)

META

29 300 660 Product version from 7/1/2023



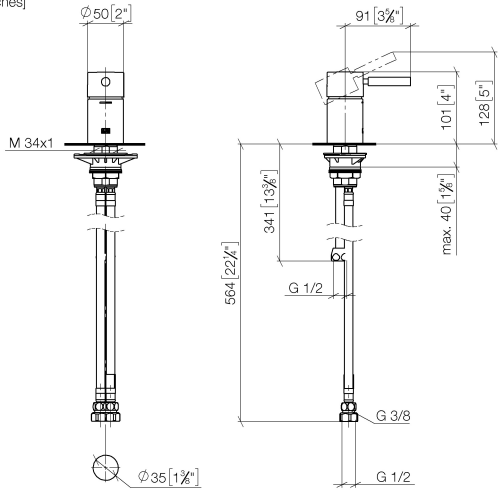
- hole diameter 35 mm
- max. flow 35.7 l/min at 3 bar flow pressure
- WRAS

| | | |
|---|-------------------------------|---------------|
|  | Brushed Champagne (22kt Gold) | 29 300 660-46 |
|  | Chrome | 29 300 660-00 |
|  | Brushed Platinum | 29 300 660-06 |
|  | Dark Chrome | 29 300 660-19 |
|  | Light Gold | 29 300 660-26 |
|  | Brushed Light Gold | 29 300 660-27 |
|  | Matte Black | 29 300 660-33 |
|  | Brushed Dark Brass | 29 300 660-39 |
|  | Brushed Bronze | 29 300 660-42 |
|  | Champagne (22kt Gold) | 29 300 660-47 |
|  | Brushed Chrome | 29 300 660-93 |
|  | Brushed Dark Platinum | 29 300 660-99 |

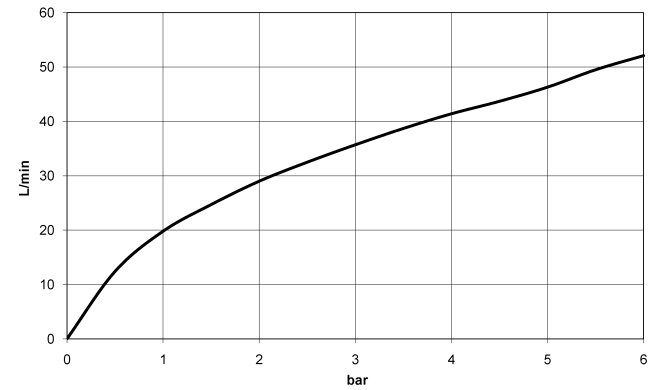
**META Single-lever bath mixer for bath rim or tile edge installation - Brushed
Champagne (22kt Gold)**

META

29 300 660 Product version from 7/1/2023
mm [inches]



Flow rate chart



Codes & Standards

| | | | |
|----------------|------|---------------------------|--------------------------------|
| ASME A112.18.1 | cUPC | Scottish Water Byelaws | UK Water Supply Regulations |
|----------------|------|---------------------------|--------------------------------|



META Single-lever bath mixer for bath rim or tile edge installation - Brushed Champagne (22kt Gold)

META

29 300 660 Product version from 7/1/2023

Certificates and sustainability

IAPMO_4976

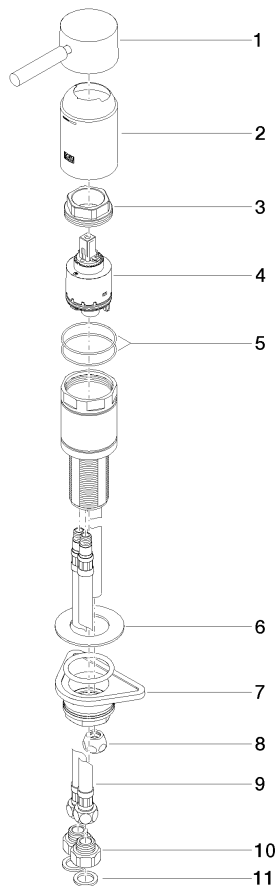
WRAS_250502

META Single-lever bath mixer for bath rim or tile edge installation - Brushed Champagne (22kt Gold)

META

29 300 660 Product version from 7/1/2023

Parts for other
finishes can be found
here: [Chrome](#)



Spare parts list

| No. | Item Number | Name | Quantity used | Delivery time |
|-----|--------------------|--------------------|---------------|---------------|
| 4 | 90 15 05 039 00 90 | cartridge | 1.00 | 2 |
| 2 | 09 28 30 037-46 | cover | 1.00 | 30 |
| 6 | 09 30 11 060 90 | disc | 1.00 | 2 |
| 8 | 04 23 30 041 00 90 | threaded connector | 1.00 | 2 |
| 3 | 09 24 04 448 90 | nut | 1.00 | 2 |
| 9 | 04 30 04 021 00 90 | hose | 1.00 | 2 |
| 7 | 04 23 10 044 02 90 | fixing set | 1.00 | 2 |
| 1 | 90 20 66 005 00-46 | handle | 1.00 | 30 |
| 11 | 09 14 05 004 90 | seal | 2.00 | 2 |
| 10 | 09 24 03 185-00 | nipple | 2.00 | 10 |
| 5 | 09 14 10 201 90 | seal | 1.00 | 2 |