

META Single-lever bath mixer for bath rim or tile edge installation - Champagne (22kt Gold)

META

29 300 660 Product version from 7/1/2023



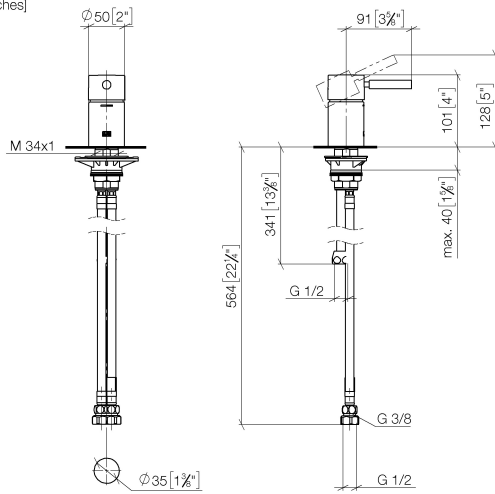
- hole diameter 35 mm
- max. flow 35.7 l/min at 3 bar flow pressure
- WRAS

	Champagne (22kt Gold)	29 300 660-47
	Chrome	29 300 660-00
	Brushed Platinum	29 300 660-06
	Dark Chrome	29 300 660-19
	Light Gold	29 300 660-26
	Brushed Light Gold	29 300 660-27
	Matte Black	29 300 660-33
	Brushed Dark Brass	29 300 660-39
	Brushed Bronze	29 300 660-42
	Brushed Champagne (22kt Gold)	29 300 660-46
	Brushed Chrome	29 300 660-93
	Brushed Dark Platinum	29 300 660-99

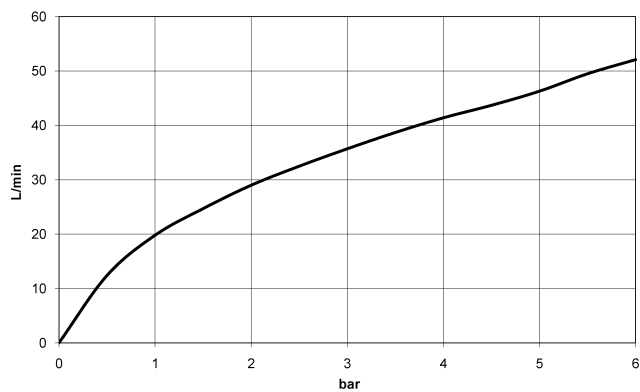
META Single-lever bath mixer for bath rim or tile edge installation - Champagne (22kt Gold)

META

29 300 660 Product version from 7/1/2023
mm [inches]



Flow rate chart



Codes & Standards

Scottish Water
Byelaws

UK Water Supply
Regulations



META Single-lever bath mixer for bath rim or tile edge installation - Champagne (22kt Gold)

META

29 300 660 Product version from 7/1/2023

Certificates and sustainability

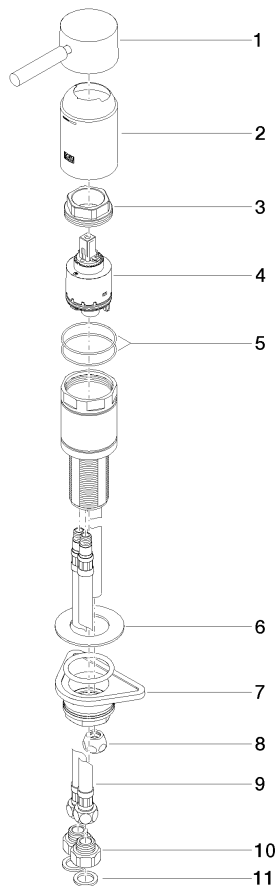
WRAS_250502

META Single-lever bath mixer for bath rim or tile edge installation - Champagne (22kt Gold)

META

29 300 660 Product version from 7/1/2023

Parts for other
finishes can be found
here: [Chrome](#)



Spare parts list

No.	Item Number	Name	Quantity used	Delivery time
6	09 30 11 060 90	disc	1.00	2
2	09 28 30 037-47	cover	1.00	30
9	04 30 04 021 00 90	hose	1.00	2
1	90 20 66 005 00-47	handle	1.00	30
7	04 23 10 044 02 90	fixing set	1.00	2
8	04 23 30 041 00 90	threaded connector	1.00	2
11	09 14 05 004 90	seal	2.00	2
10	09 24 03 185-00	nipple	2.00	10
3	09 24 04 448 90	nut	1.00	2
4	90 15 05 039 00 90	cartridge	1.00	2
5	09 14 10 201 90	seal	1.00	2