

Single-lever bath mixer for bath rim or tile edge installation - Brushed Platinum SERIES SPECIFIC

29 300 670 Product version from 6/1/2024



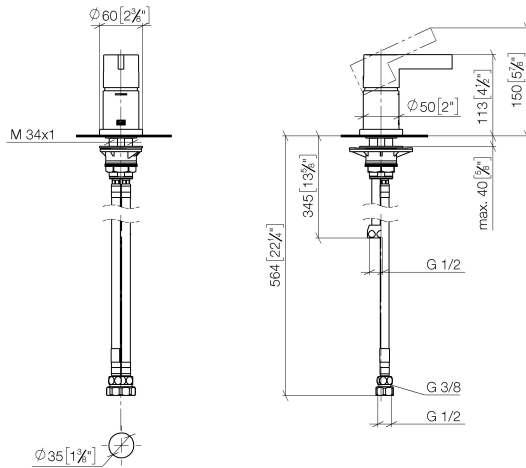
- rosette 60 x 60 mm
- hole diameter 35 mm
- max. flow 35.7 l/min at 3 bar flow pressure
- WRAS

	Brushed Platinum	29 300 670-06
	Chrome	29 300 670-00
	Platinum	29 300 670-08
	Dark Chrome	29 300 670-19
	Brushed Light Gold	29 300 670-27
	Brushed Durabrass (23kt Gold)	29 300 670-28
	Matte Black	29 300 670-33
	Brushed Dark Brass	29 300 670-39
	Brushed Champagne (22kt Gold)	29 300 670-46
	Champagne (22kt Gold)	29 300 670-47
	Brushed Chrome	29 300 670-93
	Brushed Dark Platinum	29 300 670-99

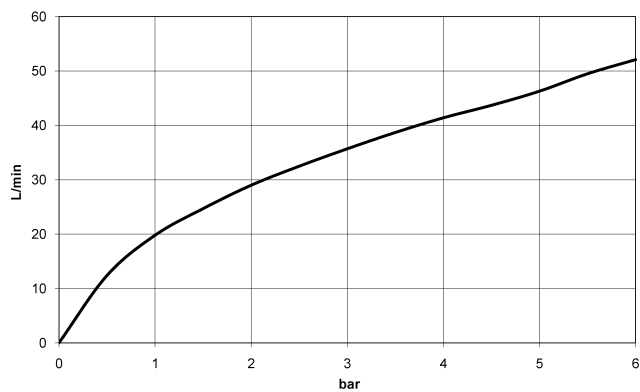
Single-lever bath mixer for bath rim or tile edge installation - Brushed Platinum SERIES SPECIFIC

29 300 670 Product version from 6/1/2024

mm [inches]



Flow rate chart



Codes & Standards

ASME A112.18.1	cUPC	DIN 4109	ISO 3822
----------------	------	----------	----------

Scottish Water Byelaws	UK Water Supply Regulations	Ü-Zeichen
---------------------------	--------------------------------	-----------



Single-lever bath mixer for bath rim or tile edge installation - Brushed Platinum SERIES SPECIFIC

29 300 670 Product version from 6/1/2024

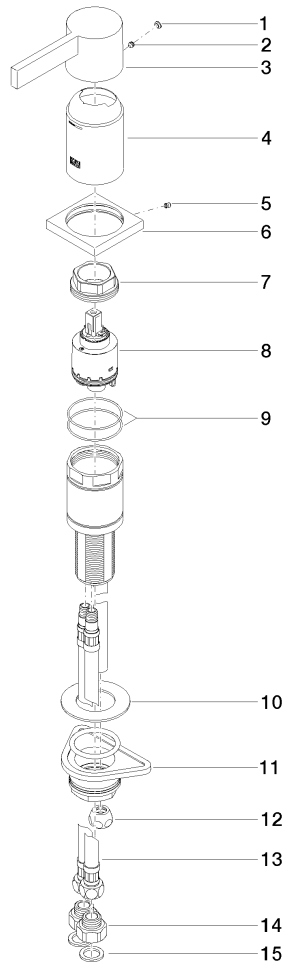
Certificates and sustainability

LGA_29	IAPMO_4976	WRAS_250502
--------	------------	-------------

Single-lever bath mixer for bath rim or tile edge installation - Brushed Platinum SERIES SPECIFIC

29 300 670 Product version from 6/1/2024

Parts for other
finishes can be found
here: [Chrome](#)



Spare parts list

No.	Item Number	Name	Quantity used	Delivery time
	4 09 28 30 037-06	cover	1.00	10
	5 09 31 11 044 90	pin	1.00	2
	14 09 24 03 185-00	nipple	2.00	10
	13 04 30 04 021 00 90	hose	2.00	2
	10 09 30 11 060 90	disc	1.00	2
	3 09 20 67 014-06	handle	1.00	10
	12 04 23 30 041 00 90	threaded connector	1.00	2
	8 90 15 05 039 00 90	cartridge	1.00	2
	11 04 23 10 044 02 90	fixing set	1.00	2
	6 09 27 67 016-06	rosette	1.00	10
	7 09 24 04 448 90	nut	1.00	2
	15 09 14 05 004 90	seal	2.00	2
	1 90 31 20 087 00-06	plug	1.00	10
	9 09 14 10 201 90	seal	2.00	2
	2 90 31 11 063 00 90	pin	1.00	2