

Single-lever bath mixer for bath rim or tile edge installation - Brushed Durabrass

SERIES SPECIFIC

(23kt Gold)

29 300 670

Product version from 6/1/2024

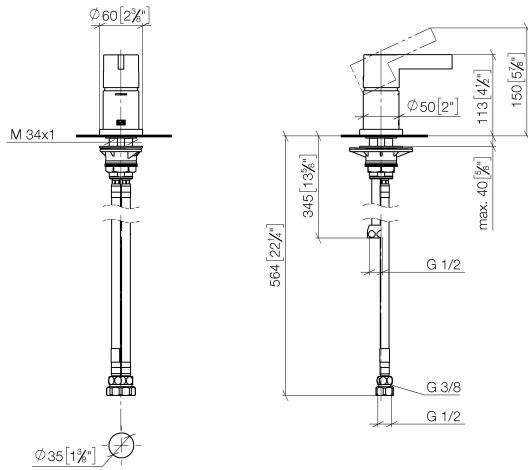


- rosette 60 x 60 mm
- hole diameter 35 mm
- max. flow 35.7 l/min at 3 bar flow pressure
- WRAS

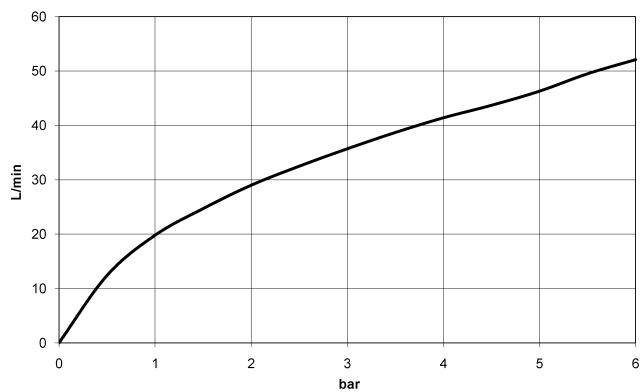
| | | |
|---|-------------------------------|---------------|
|  | Brushed Durabrass (23kt Gold) | 29 300 670-28 |
|  | Chrome | 29 300 670-00 |
|  | Brushed Platinum | 29 300 670-06 |
|  | Platinum | 29 300 670-08 |
|  | Dark Chrome | 29 300 670-19 |
|  | Brushed Light Gold | 29 300 670-27 |
|  | Matte Black | 29 300 670-33 |
|  | Brushed Champagne (22kt Gold) | 29 300 670-46 |
|  | Champagne (22kt Gold) | 29 300 670-47 |
|  | Brushed Chrome | 29 300 670-93 |
|  | Brushed Dark Platinum | 29 300 670-99 |

Single-lever bath mixer for bath rim or tile edge installation - Brushed Durabronn SERIES SPECIFIC (23kt Gold)

29 300 670 Product version from 6/1/2024
mm [inches]



Flow rate chart



Codes & Standards

DIN 4109

ISO 3822

Scottish Water
Byelaws

UK Water Supply
Regulations

Ü-Zeichen



Single-lever bath mixer for bath rim or tile edge installation - Brushed Durabrass SERIES SPECIFIC
(23kt Gold)

29 300 670 Product version from 6/1/2024

Certificates and sustainability

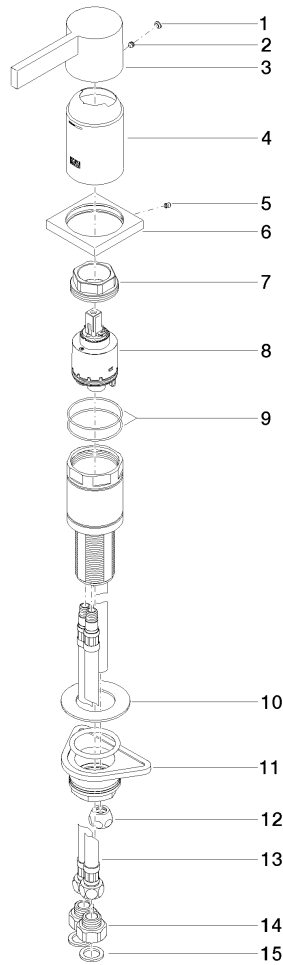
LGA_29

WRAS_2004

Single-lever bath mixer for bath rim or tile edge installation - Brushed Durabronz SERIES SPECIFIC (23kt Gold)

29 300 670 Product version from 6/1/2024

Parts for other
finishes can be found
here: [Chrome](#)



Spare parts list

| No. | Item Number | Name | Quantity used | Delivery time |
|-----|-----------------------|--------------------|---------------|---------------|
| | 14 09 24 03 185-00 | nipple | 2.00 | 10 |
| | 13 04 30 04 021 00 90 | hose | 2.00 | 2 |
| | 1 90 31 20 087 00-28 | plug | 1.00 | 20 |
| | 10 09 30 11 060 90 | disc | 1.00 | 2 |
| | 6 09 27 67 016-28 | rosette | 1.00 | 20 |
| | 11 04 23 10 044 02 90 | fixing set | 1.00 | 2 |
| | 3 09 20 67 014-28 | handle | 1.00 | 20 |
| | 7 09 24 04 448 90 | nut | 1.00 | 2 |
| | 5 09 31 11 044 90 | pin | 1.00 | 2 |
| | 15 09 14 05 004 90 | seal | 2.00 | 2 |
| | 9 09 14 10 201 90 | seal | 2.00 | 2 |
| | 8 90 15 05 039 00 90 | cartridge | 1.00 | 2 |
| | 12 04 23 30 041 00 90 | threaded connector | 1.00 | 2 |
| | 4 09 28 30 037-28 | cover | 1.00 | 20 |
| | 2 90 31 11 063 00 90 | pin | 1.00 | 2 |