

Single-lever bath mixer for bath rim or tile edge installation - Matte Black

SERIES SPECIFIC

29 300 670 Product version from 6/1/2024

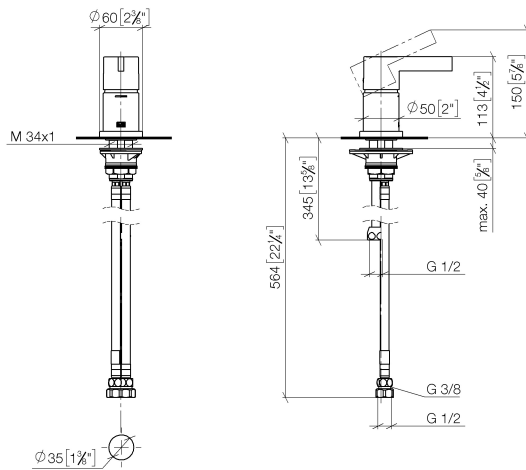


- rosette 60 x 60 mm
- hole diameter 35 mm
- max. flow 35.7 l/min at 3 bar flow pressure
- WRAS

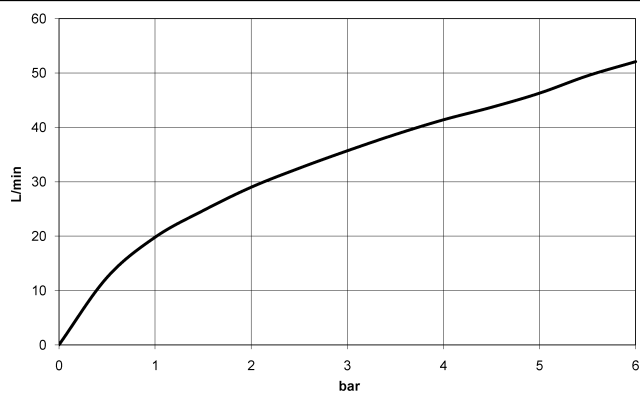
	Matte Black	29 300 670-33
	Chrome	29 300 670-00
	Brushed Platinum	29 300 670-06
	Platinum	29 300 670-08
	Dark Chrome	29 300 670-19
	Brushed Light Gold	29 300 670-27
	Brushed Durabrass (23kt Gold)	29 300 670-28
	Brushed Champagne (22kt Gold)	29 300 670-46
	Champagne (22kt Gold)	29 300 670-47
	Brushed Chrome	29 300 670-93
	Brushed Dark Platinum	29 300 670-99

29 300 670 Product version from 6/1/2024

mm [inches]



Flow rate chart



Codes & Standards

ASME A112.18.1

cUPC

DIN 4109

ISO 3822

Ü-Zeichen



Single-lever bath mixer for bath rim or tile edge installation - Matte Black

SERIES SPECIFIC

29 300 670 Product version from 6/1/2024

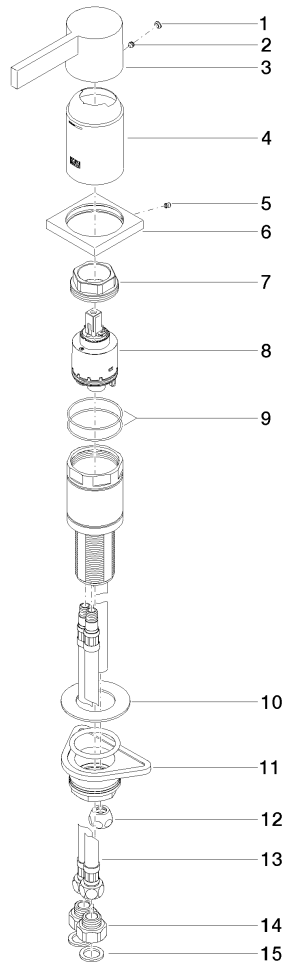
Certificates and sustainability

LGA_29

IAPMO_4976

29 300 670 Product version from 6/1/2024

Parts for other
finishes can be found
here: [Chrome](#)



Spare parts list

No.	Item Number	Name	Quantity used	Delivery time
6	09 27 67 016-33	rosette	1.00	60
10	09 30 11 060 90	disc	1.00	2
1	90 31 20 087 00-33	plug	1.00	30
9	09 14 10 201 90	seal	2.00	2
13	04 30 04 021 00 90	hose	2.00	2
14	09 24 03 185-00	nipple	2.00	10
3	09 20 67 014-33	handle	1.00	60
11	04 23 10 044 02 90	fixing set	1.00	2
2	90 31 11 063 00 90	pin	1.00	2
12	04 23 30 041 00 90	threaded connector	1.00	2
8	90 15 05 039 00 90	cartridge	1.00	2
5	09 31 11 044 90	pin	1.00	2
15	09 14 05 004 90	seal	2.00	2
7	09 24 04 448 90	nut	1.00	2
4	09 28 30 037-33	cover	1.00	30