


## VAIA Wall-mounted valve cold water without pop-up waste - Brushed Bronze

VAIA

30 010 809

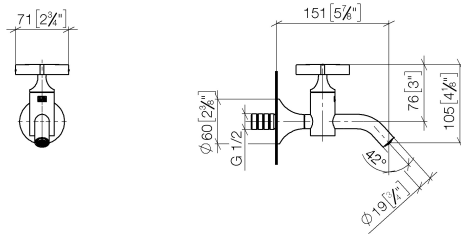


- 151mm projection
- fixed spout
- adapter with male thread 3/4"
- hole diameter 35 mm
- rosette Ø 60 mm
- max. flow 5.7 l/min
- lead-free
- This product can help a building meet the requirements of Green Building Rating Systems, e.g. LEED®, BREEAM®, DGNB
- WRAS 240102003

	Brushed Bronze	30 010 809-42
	Chrome	30 010 809-00
	Brushed Platinum	30 010 809-06
	Platinum	30 010 809-08
	Dark Chrome	30 010 809-19
	Brushed Durabronze (23kt Gold)	30 010 809-28
	Brushed Champagne (22kt Gold)	30 010 809-46
	Champagne (22kt Gold)	30 010 809-47
	Brushed Dark Platinum	30 010 809-99

30 010 809

mm [inches]



### Flow rate chart



### Codes & Standards

DIN 4109

ISO 3822

Scottish Water  
Byelaws

UK Water Supply  
Regulations

### Ü-Zeichen



## VAIA Wall-mounted valve cold water without pop-up waste - Brushed Bronze

---

VAIA

30 010 809

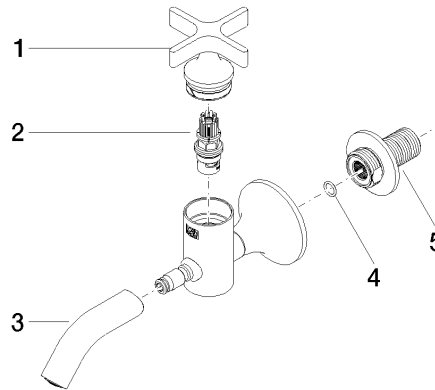
### Certificates

---

WRAS\_240102

LGA\_18

Parts for other  
finishes can be found  
here: [Chrome](#)





## VAIA Wall-mounted valve cold water without pop-up waste - Brushed Bronze

VAIA

30 010 809

### Spare parts list

No.	Item Number	Name	Quantity used	Delivery time
	90 20 66 025 00-42	handle	5	30