

TARA Wall-mounted bridge mixer with extending spout - Platinum

TARA

31 151 892

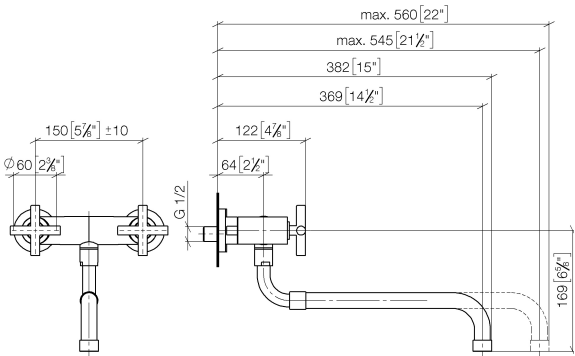


- 365-545mm projection
- pivoting spout
- laminar flow
- 1/2" connection
- max. flow 8.3 l/min at 3 bar flow pressure
- lead-free
- This product can help a building meet the requirements of Green Building Rating Systems, e.g. LEED®, BREEAM®, DGNB

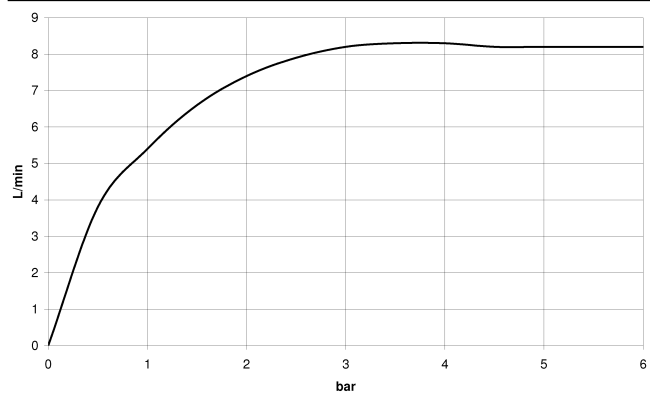
| | | |
|---|-------------------------------|---------------|
|  | Platinum | 31 151 892-08 |
|  | Chrome | 31 151 892-00 |
|  | Brushed Platinum | 31 151 892-06 |
|  | Durabrand (23kt Gold) | 31 151 892-09 |
|  | Dark Chrome | 31 151 892-19 |
|  | Brushed Durabrand (23kt Gold) | 31 151 892-28 |
|  | Brushed Champagne (22kt Gold) | 31 151 892-46 |
|  | Champagne (22kt Gold) | 31 151 892-47 |
|  | Brushed Chrome | 31 151 892-93 |
|  | Brushed Dark Platinum | 31 151 892-99 |

31 151 892

mm [inches]



Flow rate chart

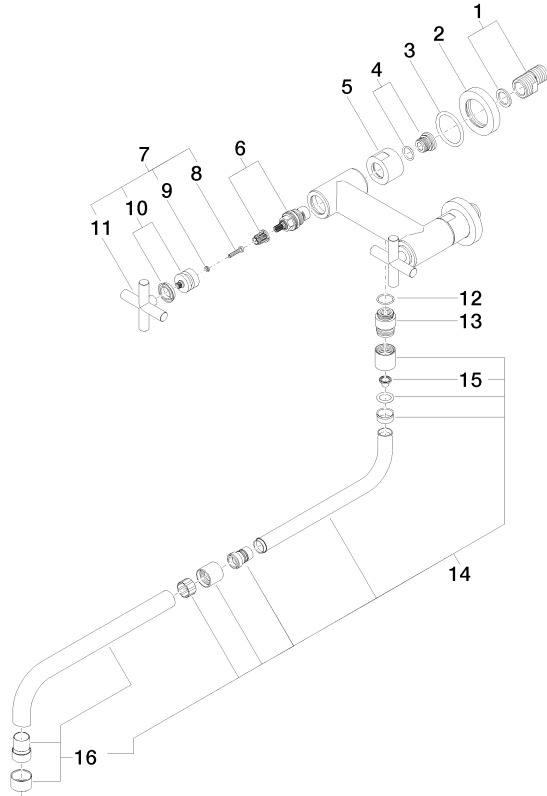


Certificates

LGA_19168.

31 151 892

Parts for other
finishes can be found
here: [Chrome](#)



Spare parts list

| No. | Item Number | Name | Quantity used | Delivery time |
|-----|--------------------|------------|---------------|---------------|
| 1 | 04 11 04 003 00 90 | connection | 2 | 2 |
| 2 | 09 27 89 004-08 | rosette | 2 | 40 |
| 3 | 09 14 10 041 90 | seal | 2 | 2 |
| 4 | 04 29 05 014 00 90 | nipple | 2 | 2 |
| 5 | 09 23 30 012-08 | nut | 2 | 40 |
| 6 | 90 90 03 131 00 90 | top | 2 | 2 |
| 7 | 90 20 89 010 10-08 | handle | 2 | 40 |
| 8 | 90 30 30 075 00 90 | screw | 2 | 2 |
| 9 | 90 30 11 029 00 90 | disc | 2 | 2 |
| 10 | 90 12 12 007 00-08 | base | 2 | 40 |
| 11 | 09 20 89 010-08 | handle | 2 | 60 |
| 12 | 90 14 10 032 00 90 | seal | 1 | 2 |
| 13 | 09 24 03 093 10-08 | nipple | 1 | 60 |
| 14 | 04 28 25 075 00-08 | spout | 1 | 40 |
| 15 | 09 29 03 027 90 | insert | 1 | 2 |
| 16 | 90 28 25 076 00-08 | spout | 1 | 40 |