

META SQUARE Two-hole mixer with individual rosettes - Brushed Bronze

META SQUARE

32 815 861
Product version from 1/1/2025



- 235mm projection
- pivotable spout 360°
- Optional swivel limiter available with swivel limiter set 12 820 970 90
- air-enriched flow
- max. flow 8 l/min at 3 bar flow pressure
- This product can help a building meet the requirements of Green Building Rating Systems, e.g. LEED®, BREEAM®, DGNB
- lead-free
- WRAS

Operating unit can be positioned freely.

	Brushed Bronze	32 815 861-42
	Chrome	32 815 861-00
	Brushed Platinum	32 815 861-06
	Platinum	32 815 861-08
	Durabrass (23kt Gold)	32 815 861-09
	Dark Chrome	32 815 861-19
	Brushed Durabrass (23kt Gold)	32 815 861-28
	Matte Black	32 815 861-33
	Brushed Champagne (22kt Gold)	32 815 861-46
	Champagne (22kt Gold)	32 815 861-47
	Brushed Chrome	32 815 861-93
	Brushed Dark Platinum	32 815 861-99


Recommended miscellaneous

	<b>Swivel limitation set -</b>	12 820 970 90
---	--------------------------------	---------------

Recommended miscellaneous

	<b>Dispenser with rosette - Brushed Bronze</b>	82 444 970-42
---	--	---------------

Recommended miscellaneous

	<b>Strainer waste with control handle - Brushed Bronze</b>	10 710 970-42
---	--	---------------

32 815 861 Product version from 1/1/2025

mm [inches]  
1:5



**Flow rate chart**



## Codes & Standards

DIN 4109

ISO 3822

Scottish Water  
Byelaws

UK Water Supply  
Regulations

Ü-Zeichen



## META SQUARE Two-hole mixer with individual rosettes - Brushed Bronze

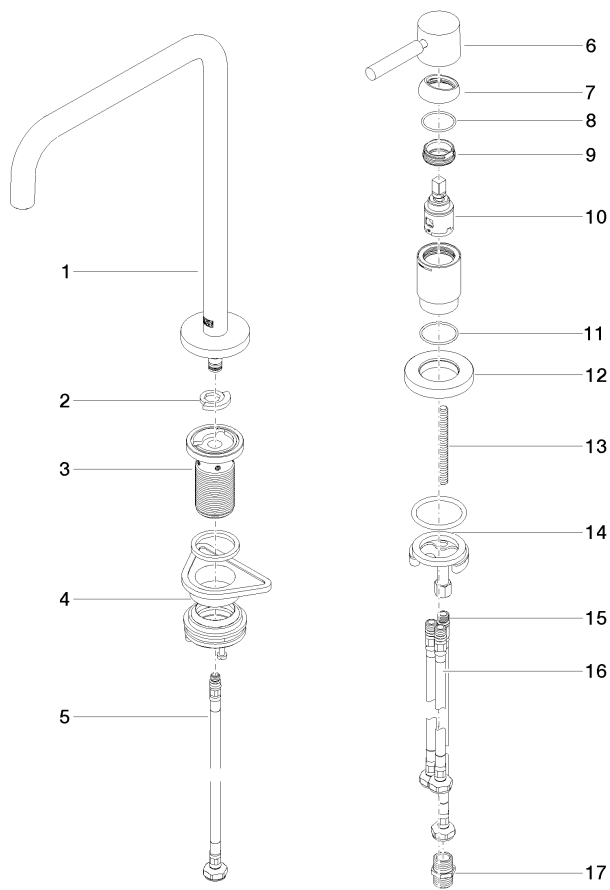
META SQUARE

32 815 861 Product version from 1/1/2025

Certificates and sustainability

LGA\_38

WRAS\_240102



## Spare parts list

No.	Item Number	Name	Quantity used	Delivery time
6	90 20 66 003 00-42	handle	1.00	20
8	09 14 10 091 90	seal	1.00	2
11	09 14 10 110 90	seal	1.00	2
5	04 30 04 100 00 90	hose	1.00	2
1	90 28 22 287 00-42	spout	1.00	20
10	90 15 05 042 00 90	cartridge	1.00	2
15	04 30 04 104 00 90	hose	1.00	2
7	09 28 30 026-42	cover	1.00	60
12	09 27 97 040-42	rosette	1.00	60
17	90 24 03 250 00 90	nipple	1.00	2
14	04 30 11 085 97 90	fixing set	1.00	2
4	04 23 10 044 08 90	fixing set	1.00	2
9	09 24 04 266 90	nut	1.00	2
13	09 31 11 011 90	pin	1.00	2
16	04 30 04 105 00 90	hose	2.00	2
2	12 820 970 90	Swivel limitation set -	1.00	2
3	90 30 01 299 00 90	shaft	1.00	2