

META Single-lever shower mixer for wall mounting - Brushed Platinum

META

33 300 660

Product version from 7/1/2023



- 3/8" shower outlet
  - slide-on rosettes Ø 60 mm
  - 1/2" connection
  - gauge 150 mm - 15 mm
  - WRAS

Intrinsic protection against back flow.

|   |                               |               |
|---|-------------------------------|---------------|
|    | Brushed Platinum              | 33 300 660-06 |
|    | Chrome                        | 33 300 660-00 |
|    | Dark Chrome                   | 33 300 660-19 |
|    | Light Gold                    | 33 300 660-26 |
|    | Brushed Light Gold            | 33 300 660-27 |
|    | Matte Black                   | 33 300 660-33 |
|    | Brushed Bronze                | 33 300 660-42 |
|    | Brushed Champagne (22kt Gold) | 33 300 660-46 |
|    | Champagne (22kt Gold)         | 33 300 660-47 |
|   | Brushed Chrome                | 33 300 660-93 |
|  | Brushed Dark Platinum         | 33 300 660-99 |

33 300 660 Product version from 7/1/2023

mm [inches]



### Flow rate chart



### Codes & Standards

DIN 4109

EN 1717

EN 817

ISO 3822

Scottish Water  
Byelaws

UK Water Supply  
Regulations

Ü-Zeichen



META Single-lever shower mixer for wall mounting - Brushed Platinum

META

33 300 660 Product version from 7/1/2023

Certificates and sustainability

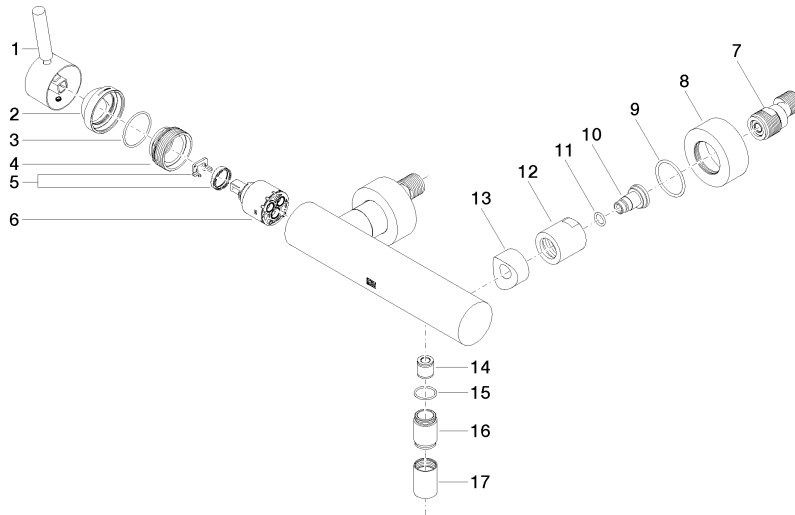
|        |                   |                 |           |
|--------|-------------------|-----------------|-----------|
| LGA_29 | Belgaqua_21-025-2 | DVGW_DW-6506DN0 | WRAS_2205 |
|--------|-------------------|-----------------|-----------|

# META Single-lever shower mixer for wall mounting - Brushed Platinum

META

33 300 660 Product version from 7/1/2023

Parts for other finishes can be found here: [Chrome](#)



## Spare parts list

| No. | Item Number           | Name                | Quantity used | Delivery time |
|-----|-----------------------|---------------------|---------------|---------------|
|     | 6 90 15 05 064 00 90  | cartridge           | 1.00          | 2             |
|     | 16 09 24 03 115 20-06 | nipple              | 1.00          | 10            |
|     | 12 09 23 10 048-06    | nut                 | 2.00          | 10            |
|     | 8 09 27 62 004-06     | rosette             | 2.00          | 10            |
|     | 9 09 14 10 119 90     | seal                | 2.00          | 2             |
|     | 4 09 24 04 296 90     | nut                 | 1.00          | 2             |
|     | 11 09 14 10 008 90    | seal                | 2.00          | 2             |
|     | 7 04 11 04 030 00 90  | connection          | 2.00          | 2             |
|     | 3 09 14 10 102 90     | seal                | 1.00          | 2             |
|     | 2 09 28 30 032-06     | cover               | 1.00          | 10            |
|     | 1 90 20 66 007 00-06  | handle              | 1.00          | 10            |
|     | 13 09 18 40 059-06    | sleeve              | 2.00          | 10            |
|     | 14 90 23 01 141 00 90 | back-flow preventer | 1.00          | 2             |
|     | 10 09 29 05 005 20 90 | nipple              | 2.00          | 60            |
|     | 15 90 14 10 032 00 90 | seal                | 1.00          | 2             |
|     | 17 90 21 02 069 00-06 | cover               | 1.00          | 10            |
|     | 5 90 28 10 148 00 90  | accessories         | 1.00          | 2             |