

VAIA Single-lever basin mixer with pop-up waste - Brushed Bronze

VAIA

33 500 809 Product version from 3/13/2017

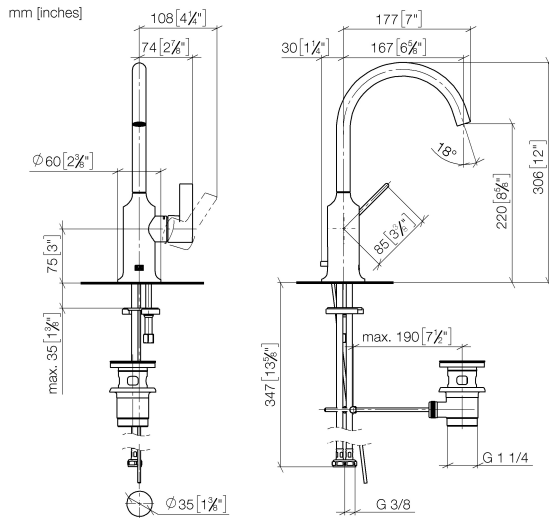


- 167mm projection
- pivotable spout 360°
- circular, air-enriched flow
- height of mixer 306 mm
- height up to aerator 220 mm
- hole diameter 35 mm
- 2x screw-in M 8 x 1 pressure hose, leak-tested
- max. flow 5.7 l/min
- lead-free
- This product can help a building meet the requirements of Green Building Rating Systems, e.g. LEED®, BREEAM®, DGNB
- WRAS

Only suitable for basins with an overflow.

	Brushed Bronze	33 500 809-42
	Chrome	33 500 809-00
	Brushed Platinum	33 500 809-06
	Platinum	33 500 809-08
	Dark Chrome	33 500 809-19
	Brushed Durabrass (23kt Gold)	33 500 809-28
	Brushed Dark Brass	33 500 809-39
	Brushed Champagne (22kt Gold)	33 500 809-46
	Champagne (22kt Gold)	33 500 809-47
	Brushed Dark Platinum	33 500 809-99

33 500 809 Product version from 3/13/2017



Flow rate chart



Codes & Standards

DIN 4109

Executive Order
no. 1007

ISO 3822

Scottish Water
Byelaws

UK Water Supply
Regulations

Ü-Zeichen



VAIA Single-lever basin mixer with pop-up waste - Brushed Bronze

VAIA

33 500 809 Product version from 3/13/2017

Certificates and sustainability

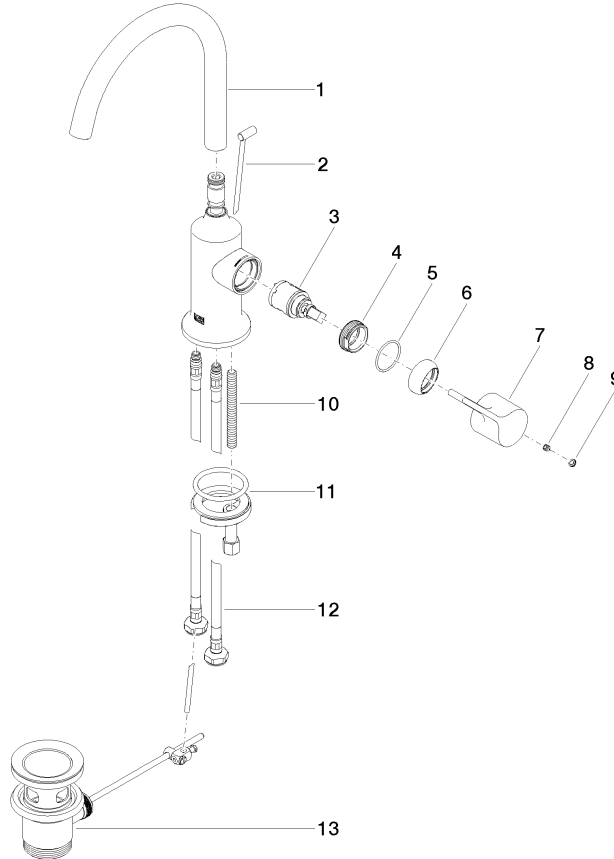
LGA_29

GDV_0400

WRAS_240702

33 500 809 Product version from 3/13/2017

Parts for other
finishes can be found
here: [Chrome](#)



Spare parts list

No.	Item Number	Name	Quantity used	Delivery time
4	09 24 04 266 90	nut	1.00	2
6	09 28 30 021-42	cover	1.00	60
2	04 20 89 035 80-42	pull-rod	1.00	60
9	90 31 20 087 00-42	plug	1.00	30
3	90 15 05 042 00 90	cartridge	1.00	2
8	90 31 11 030 00 90	pin	1.00	2
12	04 30 04 100 00 90	hose	2.00	2
1	90 28 22 311 00-42	spout	1.00	30
13	90 11 01 001 00-42	pop-up waste	1.00	30
5	09 14 10 091 90	seal	1.00	2
11	04 30 11 038 00 90	fixing set	1.00	2
7	09 20 80 020-42	handle	1.00	60
10	09 31 11 011 90	pin	1.00	2