

## META Single-lever basin mixer with pop-up waste - Matte Black

META

33 501 660 Product version up to 1/23/2020



- 125mm projection
- fixed spout
- circular, air-enriched flow
- height of mixer 133 mm
- height up to aerator 52 mm
- hole diameter 35 mm
- 2x screw-in M 8 x 1 pressure hose, leak-tested
- max. flow 5.7 l/min
- lead-free
- This product can help a building meet the requirements of Green Building Rating Systems, e.g. LEED®, BREEAM®, DGNB
- WRAS

Only suitable for basins with an overflow.

|   |                               |               |
|---|-------------------------------|---------------|
|    | Matte Black                   | 33 501 660-33 |
|    | Chrome                        | 33 501 660-00 |
|    | Brushed Platinum              | 33 501 660-06 |
|    | Dark Chrome                   | 33 501 660-19 |
|    | Light Gold                    | 33 501 660-26 |
|    | Brushed Light Gold            | 33 501 660-27 |
|    | Brushed Dark Brass            | 33 501 660-39 |
|    | Brushed Bronze                | 33 501 660-42 |
|    | Brushed Champagne (22kt Gold) | 33 501 660-46 |
|   | Champagne (22kt Gold)         | 33 501 660-47 |
|  | Brushed Chrome                | 33 501 660-93 |
|  | Brushed Dark Platinum         | 33 501 660-99 |

33 501 660 Product version up to 1/23/2020



### Flow rate chart



### Codes & Standards

DIN 4109

EN 817

ISO 3822

Scottish Water  
Byelaws

UK Water Supply  
Regulations

Ü-Zeichen



META Single-lever basin mixer with pop-up waste - Matte Black

META

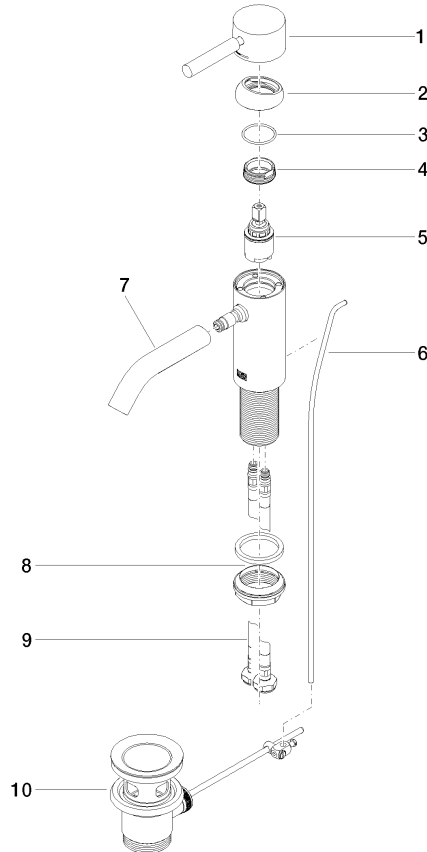
33 501 660 Product version up to 1/23/2020

Certificates and sustainability

|        |                     |           |
|--------|---------------------|-----------|
| LGA_29 | DVGW_DW-<br>6506DN0 | WRAS_2003 |
|--------|---------------------|-----------|

33 501 660 Product version up to 1/23/2020

Parts for other  
finishes can be found  
here: [Chrome](#)



## Spare parts list

| No. | Item Number           | Name         | Quantity used | Delivery time |
|-----|-----------------------|--------------|---------------|---------------|
|     | 3 09 14 10 091 90     | seal         | 1.00          | 2             |
|     | 9 04 30 04 100 00 90  | hose         | 2.00          | 2             |
|     | 4 09 24 04 266 90     | nut          | 1.00          | 2             |
|     | 5 90 15 05 044 00 90  | cartridge    | 1.00          | 2             |
|     | 7 90 11 06 206 00-33  | spout        | 1.00          | 30            |
|     | 6 09 31 09 110-33     | pull-rod     | 1.00          | 30            |
|     | 2 09 28 30 041-33     | cover        | 1.00          | 30            |
|     | 1 90 20 66 002 00-33  | handle       | 1.00          | 30            |
|     | 8 04 23 10 044 07 90  | fixing set   | 1.00          | 2             |
|     | 10 90 11 01 001 00-33 | pop-up waste | 1.00          | 30            |