

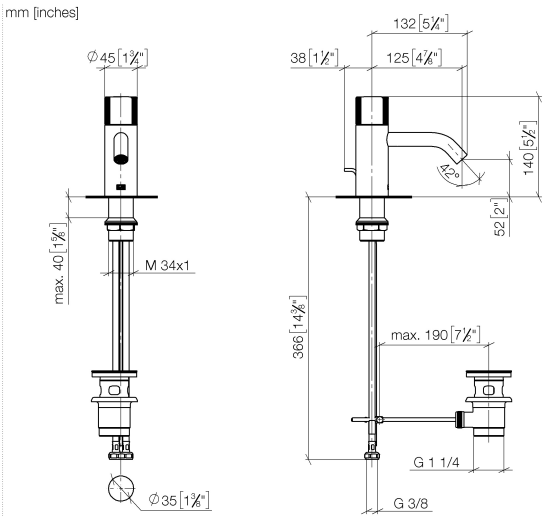
33 501 664



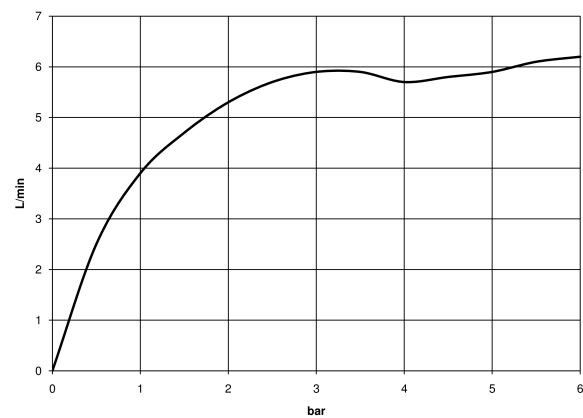
- 125mm projection
- progressive cartridge
- fixed spout
- circular, air-enriched flow
- height of mixer 140 mm
- height up to aerator 52 mm
- hole diameter 35 mm
- 2x screw-in M 8 x 1 pressure hose, leak-tested
- max. flow 5.7 l/min
- lead-free
- This product can help a building to meet requirements of Green Building Rating Systems, e.g. LEED®, BREEAM®, DGNB

Only suitable for basins with an overflow.

33 501 664



Flow rate chart

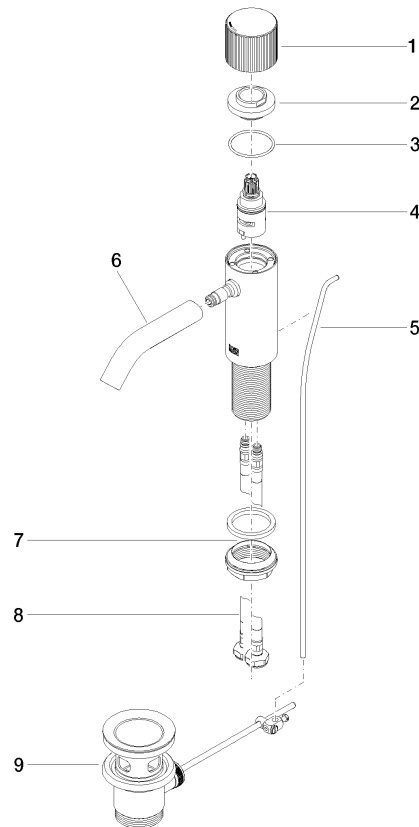


Certificates

LGA_29707.

WRAS_2004015.

33 501 664



Spare parts list

| No. | Item Number | Name | Quantity used | Delivery time |
|-----|--------------------|--------------|---------------|---------------|
| 1 | 09 20 66 019-00 | handle | 1 | 10 |
| 2 | 09 24 04 340-00 | nut | 1 | 60 |
| 3 | 09 14 10 034 90 | seal | 1 | 2 |
| 4 | 90 90 03 169 00 90 | top | 1 | 2 |
| 5 | 09 31 09 110-00 | pull-rod | 1 | 10 |
| 6 | 90 11 06 206 00-00 | spout | 1 | 10 |
| 7 | 04 23 10 044 07 90 | fixing set | 1 | 2 |
| 8 | 04 30 04 100 00 90 | hose | 2 | 2 |
| 9 | 90 11 01 001 00-00 | pop-up waste | 1 | 10 |