

## MEM Single-lever basin mixer with pop-up waste - Brushed Platinum

MEM

33 501 782 Product version from 3/10/2014 to 3/19/2019



- 200mm projection
- fixed spout
- rectangular, air-enriched flow
- height of mixer 340 mm
- height up to aerator 216 mm
- hole diameter 35 mm
- 2x screw-in M 10 x 1 pressure hose, leak-tested
- max. flow 5.7 l/min
- lead-free
- WRAS
- This product can help a building meet the requirements of Green Building Rating Systems, e.g. LEED®, BREEAM®, DGNB

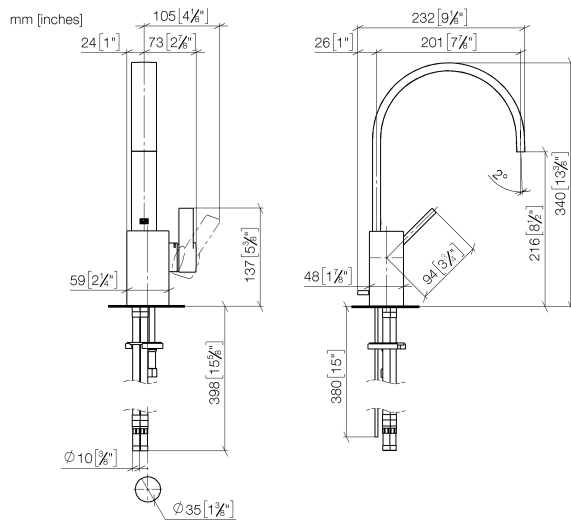
Only suitable for basins with an overflow.

	Brushed Platinum	33 501 782-06
	Chrome	33 501 782-00
	Platinum	33 501 782-08
	Dark Chrome	33 501 782-19
	Brushed Durabronze (23kt Gold)	33 501 782-28
	Brushed Champagne (22kt Gold)	33 501 782-46
	Champagne (22kt Gold)	33 501 782-47
	Brushed Dark Platinum	33 501 782-99

## MEM Single-lever basin mixer with pop-up waste - Brushed Platinum

MEM

33 501 782 Product version from 3/10/2014 to 3/19/2019



### Flow rate chart



### Codes & Standards

DIN 4109

EN 817

Executive Order  
no. 1007

ISO 3822

Scottish Water  
Byelaws

UK Water Supply  
Regulations

Ü-Zeichen

VA-Zeichen



MEM Single-lever basin mixer with pop-up waste - Brushed Platinum

MEM

33 501 782    Product version from 3/10/2014 to 3/19/2019

Certificates and sustainability

ETA_18	LGA_28	GDV_0400	WRAS_240202
--------	--------	----------	-------------

## MEM Single-lever basin mixer with pop-up waste - Brushed Platinum

MEM

33 501 782 Product version from 3/10/2014 to 3/19/2019

Parts for other  
finishes can be found  
here: [Chrome](#)





## MEM Single-lever basin mixer with pop-up waste - Brushed Platinum

MEM

33 501 782 Product version from 3/10/2014 to 3/19/2019

### Spare parts list

No.	Item Number	Name	Quantity used	Delivery time
2	09 20 78 032-06	handle	1.00	10
13	09 14 10 042 90	seal	1.00	2
9	09 20 78 057-06	handle	1.00	10
5	09 14 10 137 90	seal	1.00	2
20	04 30 11 038 75 90	fixing set	1.00	2
18	09 14 10 132 90	seal	1.00	2
12	09 31 09 080-06	pull-rod	1.00	10
14	09 24 04 289-06	nipple	1.00	10
21	09 31 11 012 90	pin	1.00	2
19	09 31 20 027 10-00	plug	1.00	10
4	09 24 04 288 90	nut	1.00	2
1	90 28 22 152 01-06	spout	1.00	10
16	09 24 04 290 90	nipple	1.00	2
17	04 30 04 104 00 90	hose	2.00	2
7	09 31 11 152 90	pin	1.00	2
15	09 14 10 166 90	seal	1.00	2
8	09 28 30 028-06	cover	1.00	10
3	90 15 05 042 00 90	cartridge	1.00	2
10	90 31 11 063 00 90	pin	1.00	2
11	90 31 20 109 00 90	plug	1.00	2
22	90 11 01 001 00-06	pop-up waste	1.00	10
6	90 14 10 063 00 90	seal	1.00	2