

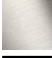

META Single-lever basin mixer without pop-up waste - Brushed Bronze

META

33 505 661 Product version from 1/23/2020 to 4/1/2025

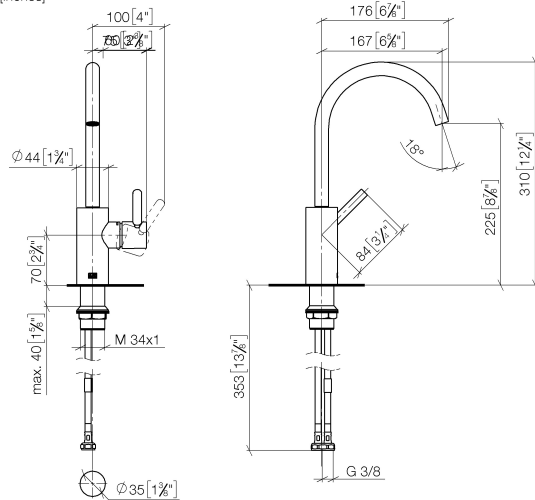


- 167mm projection
- pivotable spout 360°
- circular, air-enriched flow
- height of mixer 310 mm
- height up to aerator 225 mm
- hole diameter 35 mm
- 2x screw-in M 8 x 1 pressure hose, leak-tested
- max. flow 5.7 l/min
- lead-free
- This product can help a building meet the requirements of Green Building Rating Systems, e.g. LEED®, BREEAM®, DGNB
- WRAS

| | | |
|---|-------------------------------|---------------|
|  | Brushed Bronze | 33 505 661-42 |
|  | Chrome | 33 505 661-00 |
|  | Brushed Platinum | 33 505 661-06 |
|  | Dark Chrome | 33 505 661-19 |
|  | Light Gold | 33 505 661-26 |
|  | Brushed Light Gold | 33 505 661-27 |
|  | Matte Black | 33 505 661-33 |
|  | Brushed Dark Brass | 33 505 661-39 |
|  | Brushed Champagne (22kt Gold) | 33 505 661-46 |
|  | Champagne (22kt Gold) | 33 505 661-47 |
|  | Brushed Chrome | 33 505 661-93 |
|  | Brushed Dark Platinum | 33 505 661-99 |

33 505 661 Product version from 1/23/2020 to 4/1/2025

mm [inches]



Flow rate chart



Codes & Standards

DIN 4109

ISO 3822

Ü-Zeichen



META Single-lever basin mixer without pop-up waste - Brushed Bronze

META

33 505 661 Product version from 1/23/2020 to 4/1/2025

Certificates and sustainability

LGA_29

33 505 661 Product version from 1/23/2020 to 4/1/2025

Parts for other
finishes can be found
here: [Chrome](#)

