

VAIA Single-lever basin mixer with pop-up waste - Brushed Dark Brass

VAIA

33 505 809 Product version from 4/1/2025

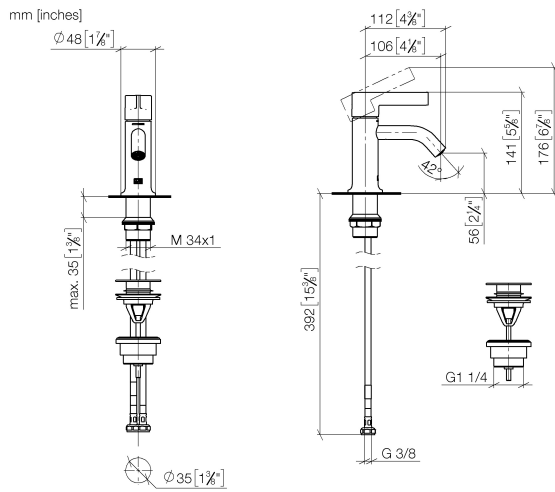


- 106mm projection
- fixed spout
- circular, air-enriched flow
- height of mixer 141 mm
- height up to aerator 56 mm
- hole diameter 35 mm
- 2x screw-in M 8 x 1 pressure hose, leak-tested
- max. flow 5.7 l/min
- lead-free
- This product can help a building meet the requirements of Green Building Rating Systems, e.g. LEED®, BREEAM®, DGNB
- WRAS

Only suitable for basins with an overflow.

	Brushed Dark Brass	33 505 809-39
	Chrome	33 505 809-00
	Brushed Platinum	33 505 809-06
	Platinum	33 505 809-08
	Dark Chrome	33 505 809-19
	Brushed Durabronze (23kt Gold)	33 505 809-28
	Brushed Bronze	33 505 809-42
	Brushed Champagne (22kt Gold)	33 505 809-46
	Champagne (22kt Gold)	33 505 809-47
	Brushed Dark Platinum	33 505 809-99

33 505 809 Product version from 4/1/2025



Flow rate chart



Codes & Standards

DIN 4109

ISO 3822

Scottish Water
Byelaws

UK Water Supply
Regulations

Ü-Zeichen



VAIA Single-lever basin mixer with pop-up waste - Brushed Dark Brass

VAIA

33 505 809 Product version from 4/1/2025

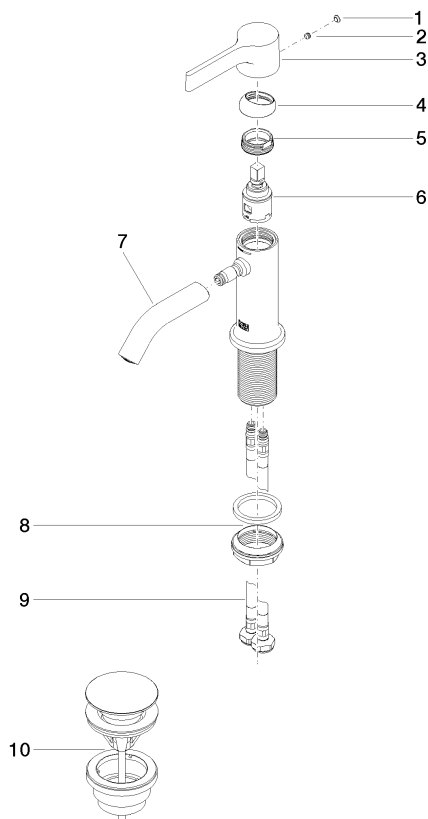
Certificates and sustainability

LGA_38

WRAS_240102

33 505 809 Product version from 4/1/2025

Parts for other finishes can be found here: [Chrome](#)



Spare parts list

No.	Item Number	Name	Quantity used	Delivery time
10	10 125 970-39	Basin Waste with push fastening 1 1/4" - Brushed Dark Brass	1.00	30
9	04 30 04 100 00 90	hose	2.00	2
3	09 20 80 020-39	handle	1.00	60
4	09 28 30 021-39	cover	1.00	60
8	04 23 10 044 07 90	fixing set	1.00	2
1	90 31 20 087 00-39	plug	1.00	30
2	90 31 11 063 00 90	pin	1.00	2
5	09 24 04 266 90	nut	1.00	2
7	90 11 06 215 00-39	spout	1.00	30
6	90 15 05 042 00 90	cartridge	1.00	2