

META Single-lever basin mixer with pop-up waste - Brushed Chrome






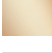

META

33 510 661 Product version up to 1/23/2020



- 123mm projection
- pivotable spout 360°
- circular, air-enriched flow
- height of mixer 272 mm
- height up to aerator 202 mm
- hole diameter 35 mm
- 2x screw-in M 8 x 1 pressure hose, leak-tested
- max. flow 5.7 l/min
- lead-free
- This product can help a building meet the requirements of Green Building Rating Systems, e.g. LEED®, BREEAM®, DGNB
- WRAS

Only suitable for basins with an overflow.

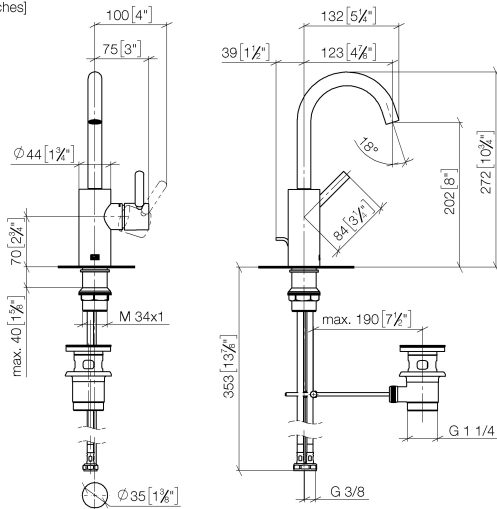
	Brushed Chrome	33 510 661-93
	Chrome	33 510 661-00
	Brushed Platinum	33 510 661-06
	Dark Chrome	33 510 661-19
	Light Gold	33 510 661-26
	Brushed Light Gold	33 510 661-27
	Matte Black	33 510 661-33
	Brushed Dark Brass	33 510 661-39
	Brushed Bronze	33 510 661-42
	Brushed Champagne (22kt Gold)	33 510 661-46
	Champagne (22kt Gold)	33 510 661-47
	Brushed Dark Platinum	33 510 661-99

META Single-lever basin mixer with pop-up waste - Brushed Chrome

META

33 510 661 Product version up to 1/23/2020

mm [inches]



Codes & Standards

DIN 4109

EN 817

ISO 3822

Scottish Water
Byelaws

UK Water Supply
Regulations

Ü-Zeichen

Certificates and sustainability

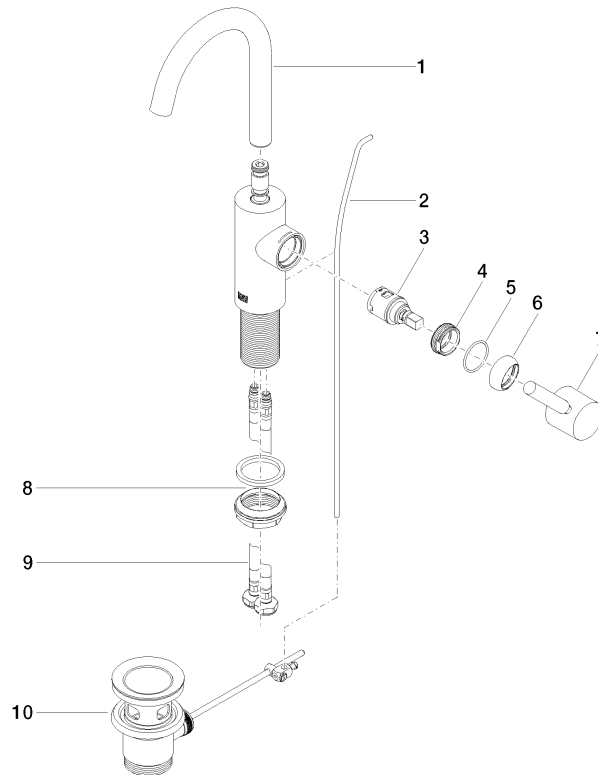
DVGW_DW-
6506DN0

LGA_29

WRAS_250502

33 510 661 Product version up to 1/23/2020

Parts for other
finishes can be found
here: [Chrome](#)



Spare parts list

No.	Item Number	Name	Quantity used	Delivery time
2	09 31 09 110-93	pull-rod	1.00	20
1	90 28 22 321 00-93	spout	1.00	20
7	90 20 66 003 00-93	handle	1.00	20
5	09 14 10 091 90	seal	1.00	2
9	04 30 04 100 00 90	hose	2.00	2
4	09 24 04 266 90	nut	1.00	2
6	09 28 30 021-93	cover	1.00	20
3	90 15 05 042 00 90	cartridge	1.00	2
8	04 23 10 044 07 90	fixing set	1.00	2
10	90 11 01 001 00-93	pop-up waste	1.00	20