

MEM Single-lever basin mixer without pop-up waste - Brushed Dark Platinum

MEM

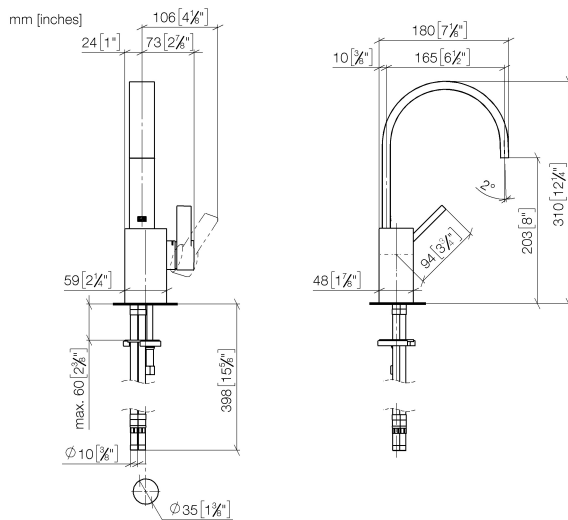
33 521 782 Product version from 3/10/2014 to 3/19/2019



- 165mm projection
- fixed spout
- rectangular, air-enriched flow
- height of mixer 310 mm
- height up to aerator 202 mm
- hole diameter 35 mm
- 2x screw-in M 10 x 1 pressure hose, leak-tested
- max. flow 5.7 l/min
- lead-free
- WRAS
- This product can help a building meet the requirements of Green Building Rating Systems, e.g. LEED®, BREEAM®, DGNB

| | | |
|---|--------------------------------|---------------|
|  | Brushed Dark Platinum | 33 521 782-99 |
|  | Chrome | 33 521 782-00 |
|  | Brushed Platinum | 33 521 782-06 |
|  | Platinum | 33 521 782-08 |
|  | Dark Chrome | 33 521 782-19 |
|  | Brushed Durabronze (23kt Gold) | 33 521 782-28 |
|  | Brushed Champagne (22kt Gold) | 33 521 782-46 |
|  | Champagne (22kt Gold) | 33 521 782-47 |

33 521 782 Product version from 3/10/2014 to 3/19/2019



Flow rate chart



Codes & Standards

| | | | |
|---------------------------|--------------------------------|-----------------------------|------------|
| DIN 4109 | EN 817 | Executive Order no. 1007 | ISO 3822 |
| Scottish Water Byelaws | UK Water Supply Regulations | Ü-Zeichen | VA-Zeichen |



MEM Single-lever basin mixer without pop-up waste - Brushed Dark Platinum

MEM

33 521 782 Product version from 3/10/2014 to 3/19/2019

Certificates and sustainability

| | | | |
|--------|--------|----------|-------------|
| ETA_18 | LGA_28 | GDV_0400 | WRAS_240202 |
|--------|--------|----------|-------------|

33 521 782 Product version from 3/10/2014 to 3/19/2019

Parts for other finishes can be found here: [Chrome](#)



Spare parts list

| No. | Item Number | Name | Quantity used | Delivery time |
|-----|--------------------|------------|---------------|---------------|
| 14 | 04 30 11 038 75 90 | fixing set | 1.00 | 2 |
| 13 | 09 31 20 027 10-00 | plug | 1.00 | 10 |
| 2 | 90 15 05 042 00 90 | cartridge | 1.00 | 2 |
| 4 | 09 14 10 137 90 | seal | 1.00 | 2 |
| 10 | 09 31 20 017 90 | plug | 1.00 | 2 |
| 11 | 04 30 04 016 00 90 | hose | 2.00 | 60 |
| 12 | 09 14 10 132 90 | seal | 1.00 | 2 |
| 7 | 09 28 30 028-99 | cover | 1.00 | 20 |
| 1 | 90 28 22 153 01-99 | spout | 1.00 | 20 |
| 6 | 09 31 11 152 90 | pin | 1.00 | 2 |
| 3 | 09 24 04 288 90 | nut | 1.00 | 2 |
| 15 | 09 31 11 012 90 | pin | 1.00 | 2 |
| 8 | 09 20 78 057-99 | handle | 1.00 | 20 |
| 5 | 90 14 10 063 00 90 | seal | 1.00 | 2 |
| 9 | 90 31 11 063 00 90 | pin | 1.00 | 2 |