

## VAIA Single-lever basin mixer without pop-up waste - Chrome

33 521 809 Product version from 3/13/2017

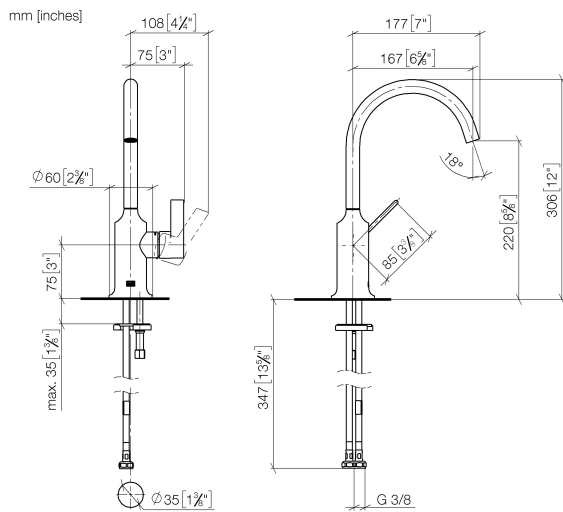


- 167mm projection
- pivotable spout 360°
- circular, air-enriched flow
- height of mixer 306 mm
- height up to aerator 220 mm
- hole diameter 35 mm
- 2x screw-in M 8 x 1 pressure hose, leak-tested
- max. flow 5.7 l/min
- lead-free
- This product can help a building meet the requirements of Green Building Rating Systems, e.g. LEED®, BREEAM®, DGNB
- WRAS

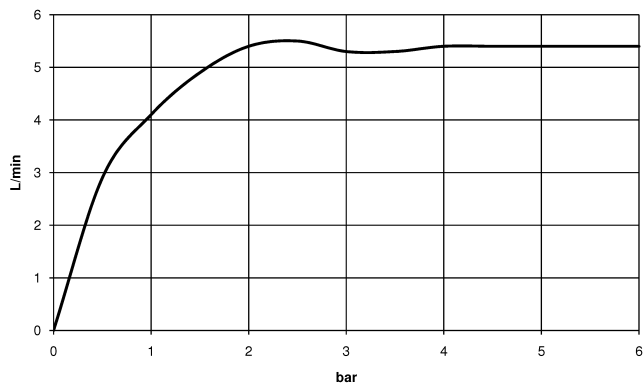
	Chrome	33 521 809-00
	Brushed Platinum	33 521 809-06
	Platinum	33 521 809-08
	Dark Chrome	33 521 809-19
	Brushed Durabronze (23kt Gold)	33 521 809-28
	Brushed Bronze	33 521 809-42
	Brushed Champagne (22kt Gold)	33 521 809-46
	Champagne (22kt Gold)	33 521 809-47
	Brushed Dark Platinum	33 521 809-99

## VAIA Single-lever basin mixer without pop-up waste - Chrome

33 521 809 Product version from 3/13/2017



### Flow rate chart



### Codes & Standards

DIN 4109

Executive Order  
no. 1007

ISO 3822

Scottish Water  
Byelaws

UK Water Supply  
Regulations

Ü-Zeichen



## VAIA Single-lever basin mixer without pop-up waste - Chrome

---

33 521 809 Product version from 3/13/2017

### Certificates

---

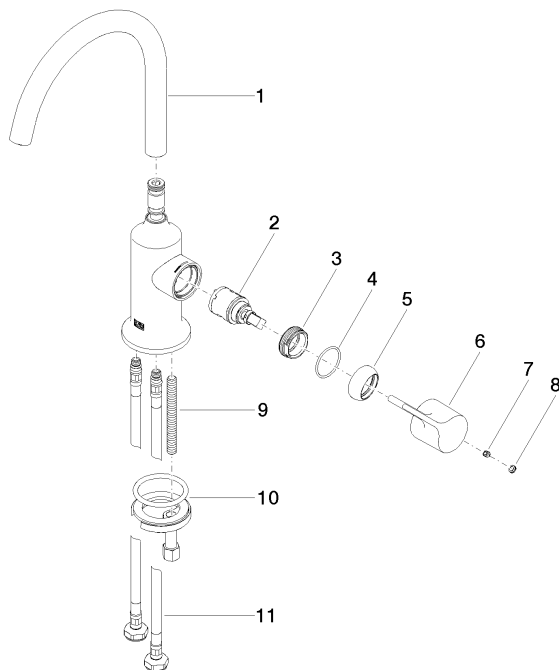
LGA\_29

GDV\_0400

WRAS\_240702

## VAIA Single-lever basin mixer without pop-up waste - Chrome

33 521 809 Product version from 3/13/2017



### Spare parts list

No.	Item Number	Name	Quantity used	Delivery time
1	90 28 22 311 00-00	spout	1	10
2	90 15 05 042 00 90	cartridge	1	2
3	09 24 04 266 90	nut	1	2
4	09 14 10 091 90	seal	1	2
5	09 28 30 021-00	cover	1	10
6	09 20 80 020-00	handle	1	10
7	90 31 11 030 00 90	pin	1	2
8	90 31 20 087 00-00	plug	1	10
9	09 31 11 011 90	pin	1	2
10	04 30 11 038 00 90	fixing set	1	2
11	04 30 04 100 00 90	hose	2	2