

VAIA Single-lever basin mixer without pop-up waste - Brushed Champagne (22kt Gold)

VAIA

33 521 809 Product version from 3/13/2017



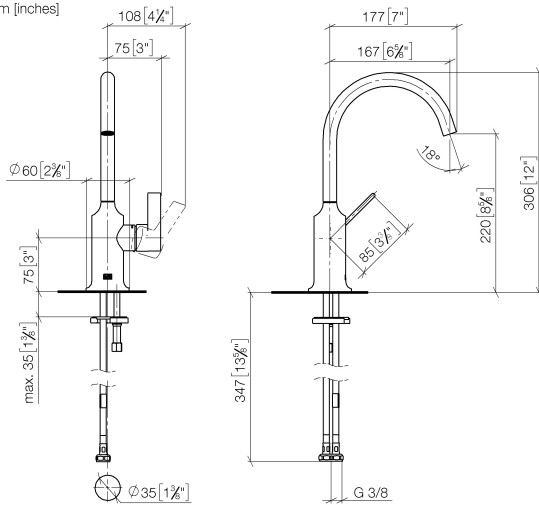
- 167mm projection
- pivotable spout 360°
- circular, air-enriched flow
- height of mixer 306 mm
- height up to aerator 220 mm
- hole diameter 35 mm
- 2x screw-in M 8 x 1 pressure hose, leak-tested
- max. flow 5.7 l/min
- lead-free
- This product can help a building meet the requirements of Green Building Rating Systems, e.g. LEED®, BREEAM®, DGNB
- WRAS

| | | |
|---|--------------------------------|---------------|
|  | Brushed Champagne (22kt Gold) | 33 521 809-46 |
|  | Chrome | 33 521 809-00 |
|  | Brushed Platinum | 33 521 809-06 |
|  | Platinum | 33 521 809-08 |
|  | Dark Chrome | 33 521 809-19 |
|  | Brushed Durabronze (23kt Gold) | 33 521 809-28 |
|  | Brushed Bronze | 33 521 809-42 |
|  | Champagne (22kt Gold) | 33 521 809-47 |
|  | Brushed Dark Platinum | 33 521 809-99 |

VAIA Single-lever basin mixer without pop-up waste - Brushed Champagne (22kt Gold)

VAIA

33 521 809 Product version from 3/13/2017
mm [inches]



Flow rate chart



Codes & Standards

DIN 4109

Executive Order
no. 1007

ISO 3822

Scottish Water
Byelaws

UK Water Supply
Regulations

Ü-Zeichen



VAIA Single-lever basin mixer without pop-up waste - Brushed Champagne (22kt Gold)

VAIA

33 521 809 Product version from 3/13/2017

Certificates and sustainability

LGA_29

GDV_0400

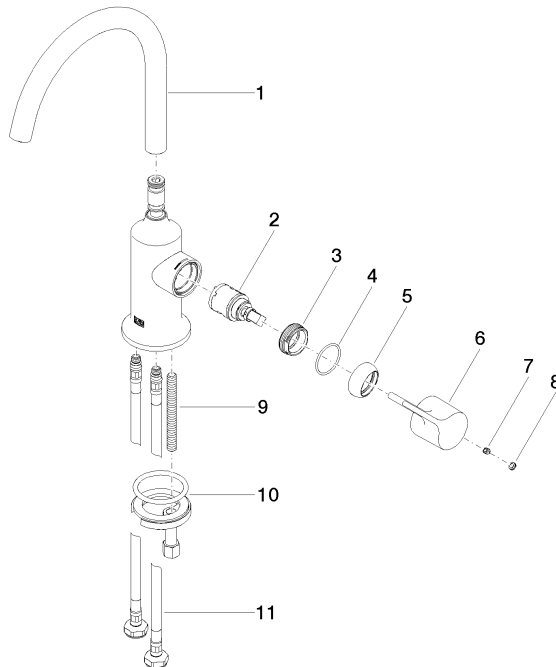
WRAS_240702

VAIA Single-lever basin mixer without pop-up waste - Brushed Champagne (22kt Gold)

VAIA

33 521 809 Product version from 3/13/2017

Parts for other
finishes can be found
here: [Chrome](#)



Spare parts list

| No. | Item Number | Name | Quantity used | Delivery time |
|-----|-----------------------|------------|---------------|---------------|
| | 10 04 30 11 038 00 90 | fixing set | 1.00 | 2 |
| | 5 09 28 30 021-46 | cover | 1.00 | 60 |
| | 3 09 24 04 266 90 | nut | 1.00 | 2 |
| | 2 90 15 05 042 00 90 | cartridge | 1.00 | 2 |
| | 6 09 20 80 020-46 | handle | 1.00 | 60 |
| | 11 04 30 04 100 00 90 | hose | 2.00 | 2 |
| | 8 90 31 20 087 00-46 | plug | 1.00 | 30 |
| | 9 09 31 11 011 90 | pin | 1.00 | 2 |
| | 4 09 14 10 091 90 | seal | 1.00 | 2 |
| | 1 90 28 22 311 00-46 | spout | 1.00 | 30 |
| | 7 90 31 11 030 00 90 | pin | 1.00 | 2 |