

## MEM Single-lever basin mixer without pop-up waste - Brushed Platinum

MEM

33 522 782 Product version from 9/1/2022

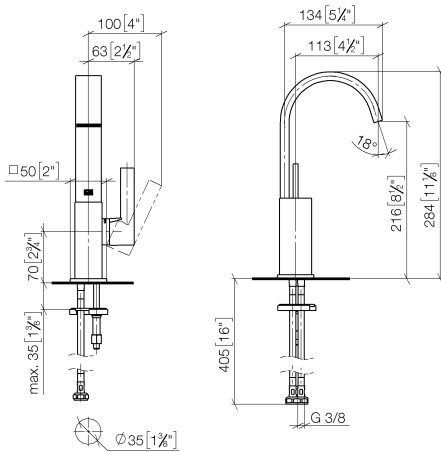


- 113mm projection
- fixed spout
- rectangular, air-enriched flow
- height of mixer 284 mm
- height up to aerator 216 mm
- hole diameter 35 mm
- 2x screw-in M 10 x 1 pressure hose, leak-tested
- max. flow 5.7 l/min
- lead-free
- This product can help a building meet the requirements of Green Building Rating Systems, e.g. LEED®, BREEAM®, DGNB

	Brushed Platinum	33 522 782-06
	Chrome	33 522 782-00
	Platinum	33 522 782-08
	Dark Chrome	33 522 782-19
	Brushed Durabronze (23kt Gold)	33 522 782-28
	Brushed Champagne (22kt Gold)	33 522 782-46
	Champagne (22kt Gold)	33 522 782-47
	Brushed Dark Platinum	33 522 782-99

33 522 782 Product version from 9/1/2022

mm [inches]



### Flow rate chart



### Codes & Standards

DIN 4109

Executive Order  
no. 1007

ISO 3822

Ü-Zeichen



## MEM Single-lever basin mixer without pop-up waste - Brushed Platinum

---

MEM

33 522 782 Product version from 9/1/2022

### Certificates and sustainability

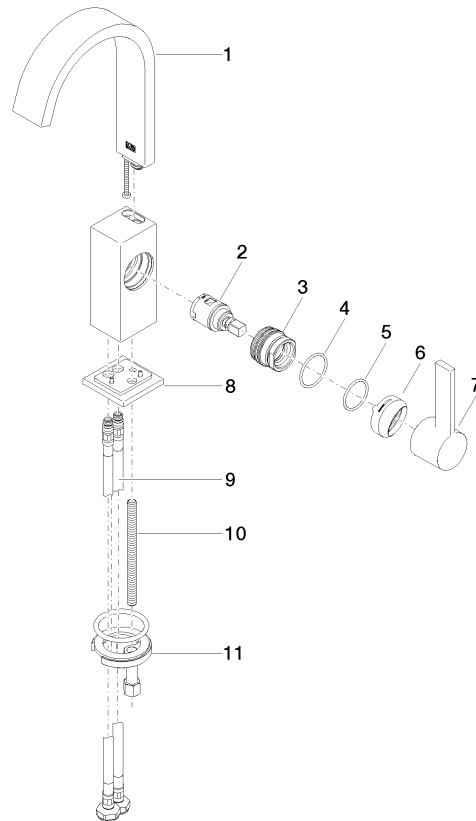
---

LGA\_28

GDV\_0400

33 522 782 Product version from 9/1/2022

Parts for other  
finishes can be found  
here: [Chrome](#)



## Spare parts list

No.	Item Number	Name	Quantity used	Delivery time
7	90 20 86 004 00-06	handle	1.00	10
4	09 14 10 137 90	seal	1.00	2
6	90 28 30 051 00-06	cover	1.00	10
3	09 24 04 288 90	nut	1.00	2
2	90 15 05 042 00 90	cartridge	1.00	2
11	04 30 11 038 00 90	fixing set	1.00	2
10	09 31 11 012 90	pin	1.00	2
1	90 28 22 365 10-06	spout	1.00	10
9	04 30 04 100 00 90	hose	2.00	2
8	90 27 66 021 00-06	rosette	1.00	10
5	90 14 10 063 00 90	seal	1.00	2