

## VAIA Single-lever basin mixer without pop-up waste - Brushed Dark Platinum

VAIA

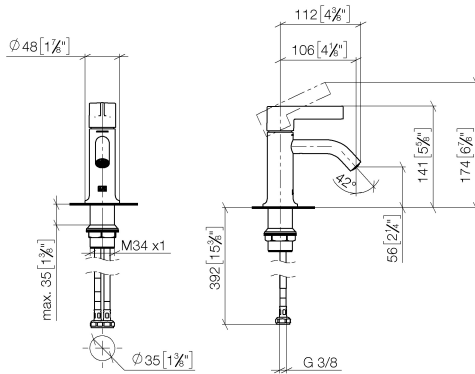
33 522 809 Product version from 4/1/2025



- 106mm projection
- fixed spout
- circular, air-enriched flow
- height of mixer 141 mm
- height up to aerator 56 mm
- hole diameter 35 mm
- 2x screw-in M 8 x 1 pressure hose, leak-tested
- max. flow 5.7 l/min
- lead-free
- This product can help a building meet the requirements of Green Building Rating Systems, e.g. LEED®, BREEAM®, DGNB
- WRAS

	Brushed Dark Platinum	33 522 809-99
	Chrome	33 522 809-00
	Brushed Platinum	33 522 809-06
	Platinum	33 522 809-08
	Dark Chrome	33 522 809-19
	Brushed Durabronze (23kt Gold)	33 522 809-28
	Brushed Dark Brass	33 522 809-39
	Brushed Bronze	33 522 809-42
	Brushed Champagne (22kt Gold)	33 522 809-46
	Champagne (22kt Gold)	33 522 809-47

mm [inches]



### Flow rate chart



### Codes & Standards

DIN 4109

ISO 3822

Scottish Water  
Byelaws

UK Water Supply  
Regulations

### Ü-Zeichen



## VAIA Single-lever basin mixer without pop-up waste - Brushed Dark Platinum

---

VAIA

33 522 809 Product version from 4/1/2025

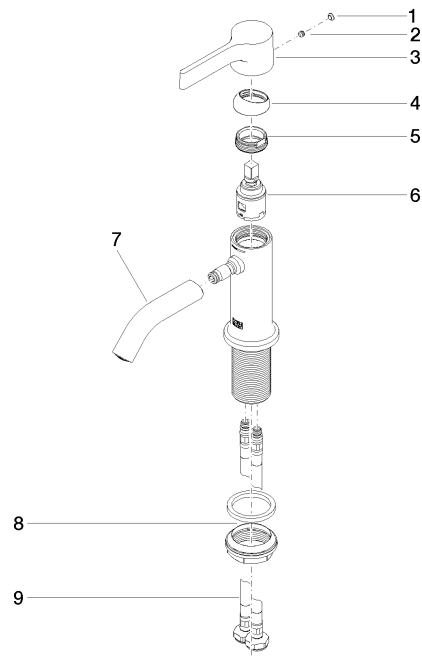
### Certificates and sustainability

---

LGA\_38

WRAS\_240102

Parts for other  
finishes can be found  
here: [Chrome](#)



## Spare parts list

No.	Item Number	Name	Quantity used	Delivery time
1	90 31 20 087 00-99	plug	1.00	20
3	09 20 80 020-99	handle	1.00	20
9	04 30 04 100 00 90	hose	2.00	2
7	90 11 06 215 00-99	spout	1.00	20
5	09 24 04 266 90	nut	1.00	2
4	09 28 30 021-99	cover	1.00	20
8	04 23 10 044 07 90	fixing set	1.00	2
6	90 15 05 042 00 90	cartridge	1.00	2
2	90 31 11 063 00 90	pin	1.00	2