

# META Single-lever basin mixer with raised base without pop-up waste - Brushed Light Gold

META

33 534 661 Product version from 1/23/2020 to 4/1/2025



- 201mm projection
- pivotable spout 360°
- circular, air-enriched flow
- height of mixer 397 mm
- height up to aerator 299 mm
- hole diameter 35 mm
- 2x screw-in M 8 x 1 pressure hose, leak-tested
- max. flow 5.7 l/min
- lead-free
- This product can help a building meet the requirements of Green Building Rating Systems, e.g. LEED®, BREEAM®, DGNB
- WRAS

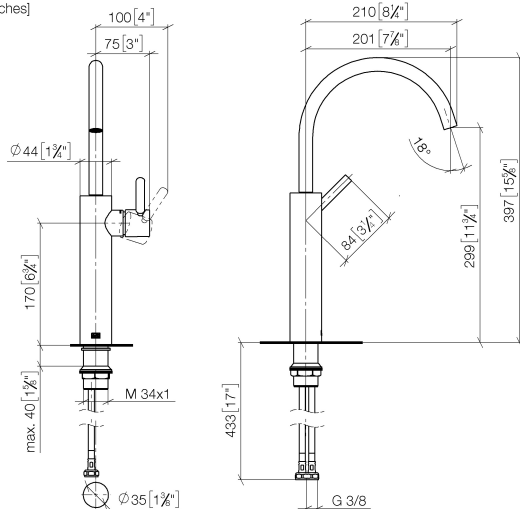
for use on countertop bowls

	Brushed Light Gold	33 534 661-27
	Chrome	33 534 661-00
	Brushed Platinum	33 534 661-06
	Dark Chrome	33 534 661-19
	Light Gold	33 534 661-26
	Matte Black	33 534 661-33
	Brushed Dark Brass	33 534 661-39
	Brushed Bronze	33 534 661-42
	Brushed Champagne (22kt Gold)	33 534 661-46
	Champagne (22kt Gold)	33 534 661-47
	Brushed Chrome	33 534 661-93
	Brushed Dark Platinum	33 534 661-99

# META Single-lever basin mixer with raised base without pop-up waste - Brushed Light Gold

META

33 534 661 Product version from 1/23/2020 to 4/1/2025  
mm [inches]



## Flow rate chart



## Codes & Standards

DIN 4109

ISO 3822

Ü-Zeichen



## META Single-lever basin mixer with raised base without pop-up waste - Brushed Light Gold

---

META

33 534 661 Product version from 1/23/2020 to 4/1/2025

Certificates and sustainability

---

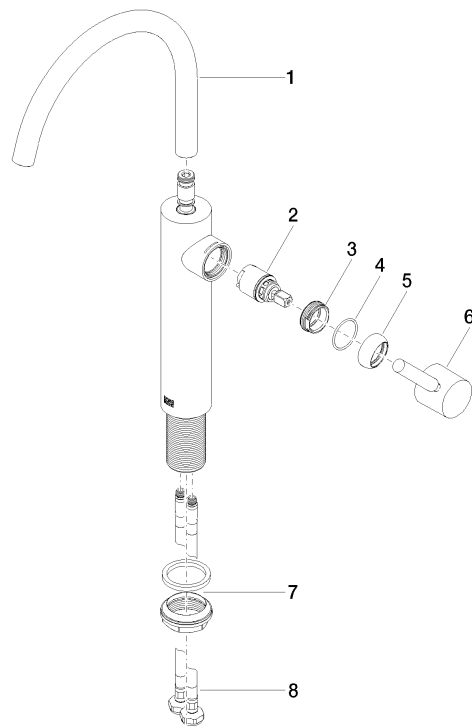
LGA\_29

## META Single-lever basin mixer with raised base without pop-up waste - Brushed Light Gold

META

33 534 661 Product version from 1/23/2020 to 4/1/2025

Parts for other  
finishes can be found  
here: [Chrome](#)



### Spare parts list

No.	Item Number	Name	Quantity used	Delivery time
7	04 23 10 044 07 90	fixing set	1.00	2
8	04 30 04 101 00 90	hose	2.00	2
2	90 15 05 044 00 90	cartridge	1.00	2
5	09 28 30 021-27	cover	1.00	60
1	90 28 22 313 00-27	spout	1.00	30
4	09 14 10 091 90	seal	1.00	2
6	90 20 66 003 00-27	handle	1.00	30
3	09 24 04 266 90	nut	1.00	2