

META Single-lever basin mixer without pop-up waste - Brushed Champagne (22kt Gold)

META

33 565 661 Product version from 7/1/2023 to 4/1/2025



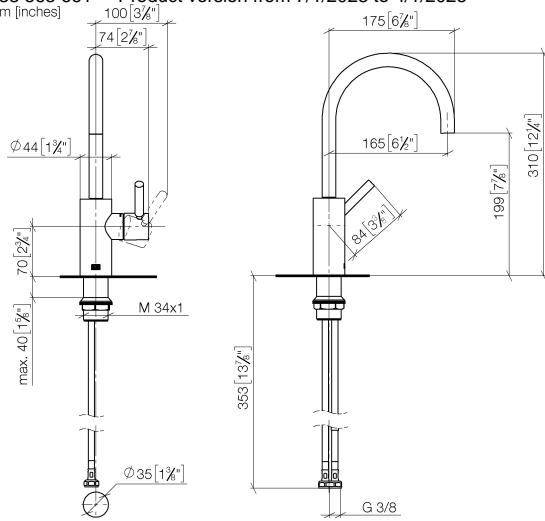
- 180° spout
- 165mm projection
- pivotable spout 360°
- circular, air-enriched flow
- height of mixer 310 mm
- height up to aerator 199 mm
- hole diameter 35 mm
- 2x screw-in M 8 x 1 pressure hose, leak-tested
- max. flow 5.7 l/min
- lead-free
- This product can help a building meet the requirements of Green Building Rating Systems, e.g. LEED®, BREEAM®, DGNB

	Brushed Champagne (22kt Gold)	33 565 661-46
	Chrome	33 565 661-00
	Brushed Platinum	33 565 661-06
	Dark Chrome	33 565 661-19
	Light Gold	33 565 661-26
	Brushed Light Gold	33 565 661-27
	Matte Black	33 565 661-33
	Brushed Dark Brass	33 565 661-39
	Brushed Bronze	33 565 661-42
	Champagne (22kt Gold)	33 565 661-47
	Brushed Chrome	33 565 661-93
	Brushed Dark Platinum	33 565 661-99

META Single-lever basin mixer without pop-up waste - Brushed Champagne (22kt Gold)

META

33 565 661 Product version from 7/1/2023 to 4/1/2025
mm [inches]



Flow rate chart



Codes & Standards

Scottish Water
Byelaws

UK Water Supply
Regulations



META Single-lever basin mixer without pop-up waste - Brushed Champagne (22kt Gold)

META

33 565 661 Product version from 7/1/2023 to 4/1/2025

Certificates and sustainability

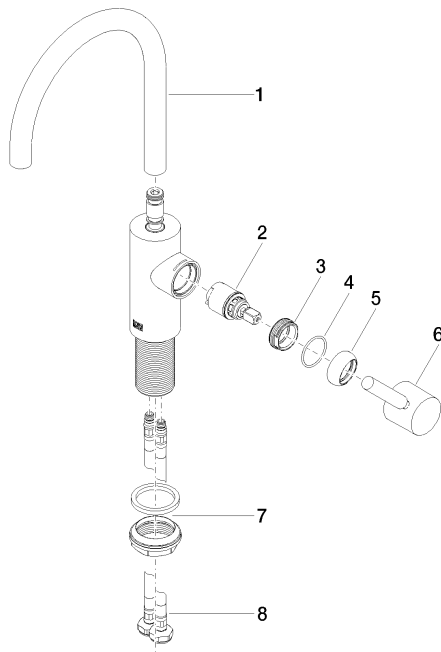
WRAS_250502

META Single-lever basin mixer without pop-up waste - Brushed Champagne (22kt Gold)

META

33 565 661 Product version from 7/1/2023 to 4/1/2025

Parts for other
finishes can be found
here: [Chrome](#)



Spare parts list

No.	Item Number	Name	Quantity used	Delivery time
3	09 24 04 266 90	nut	1.00	2
2	90 15 05 044 00 90	cartridge	1.00	2
4	09 14 10 091 90	seal	1.00	2
7	04 23 10 044 07 90	fixing set	1.00	2
5	09 28 30 041-46	cover	1.00	30
8	04 30 04 100 00 90	hose	2.00	2
6	90 20 66 003 00-46	handle	1.00	30
1	90 28 22 350 00-46	spout	1.00	30