

## MEM Single-lever mixer - Brushed Champagne (22kt Gold)

MEM

33 815 682



- 241mm projection
- pivotable spout 360°
- Optional swivel limiter available with swivel limiter set 12 820 970 90
- air-enriched flow
- max. flow 6.3 l/min at 3 bar flow pressure
- lead-free
- This product can help a building meet the requirements of Green Building Rating Systems, e.g. LEED®, BREEAM®, DGNB
- WRAS 240202021

	Brushed Champagne (22kt Gold)	33 815 682-46
	Chrome	33 815 682-00
	Brushed Platinum	33 815 682-06
	Platinum	33 815 682-08
	Durabrand (23kt Gold)	33 815 682-09
	Dark Chrome	33 815 682-19
	Brushed Durabrand (23kt Gold)	33 815 682-28
	Matte Black	33 815 682-33
	Champagne (22kt Gold)	33 815 682-47
	Brushed Chrome	33 815 682-93
	Brushed Dark Platinum	33 815 682-99

### Recommended miscellaneous

**Swivel limitation set -** 12 820 970 90



### Recommended miscellaneous

**Dispenser without rosette -  
Brushed Champagne (22kt Gold)** 82 424 970-46



### Recommended miscellaneous

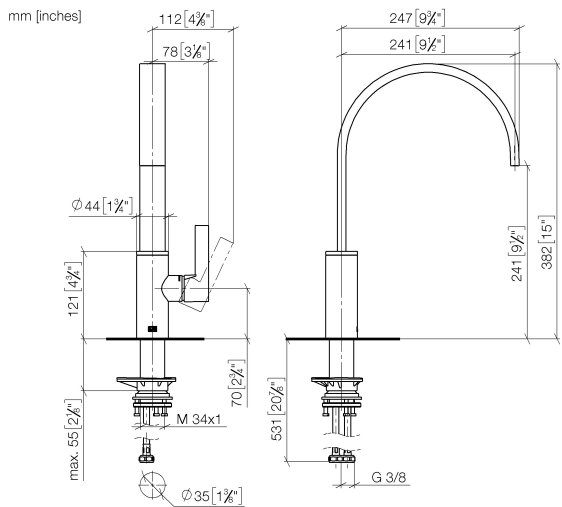
**Strainer waste with control handle  
- Brushed Champagne (22kt Gold)** 10 712 970-46



**MEM Single-lever mixer - Brushed Champagne (22kt Gold)**

MEM

33 815 682



Flow rate chart



**Codes & Standards**

DIN 4109	ISO 3822	Scottish Water Byelaws	UK Water Supply Regulations
----------	----------	------------------------	-----------------------------

Ü-Zeichen



## MEM Single-lever mixer - Brushed Champagne (22kt Gold)

---

MEM

33 815 682

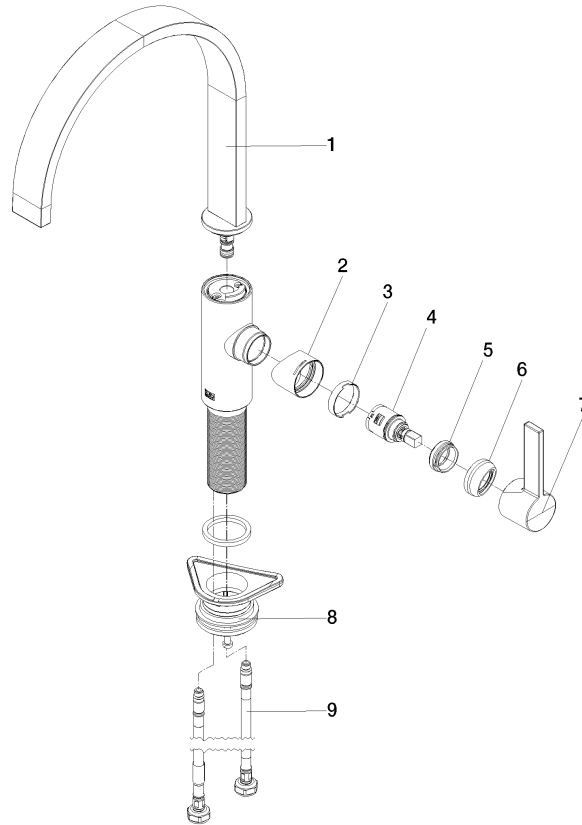
### Certificates

---

WRAS\_240202

LGA\_38

**Product version from 3/1/2023**





MEM Single-lever mixer - Brushed Champagne (22kt Gold)

MEM

33 815 682

Spare parts list

Product version from 3/1/2023

No.	Item Number	Name	Quantity used	Delivery time
	90 28 22 333 00-46	spout	10	-

Spare part can no longer be ordered, please order the replacement item