

TARA Single-lever mixer for rinsing/Profi spray - Brushed Platinum

33 826 888




- 235mm projection
  - pivotable spout 360°
  - air-enriched flow
  - height of mixer 400 mm
  - height up to aerator 230 mm
  - single-lever mixer hole diameter 35mm
  - max. flow 7 l/min at 3 bar flow pressure
  - lead-free
  - WRAS 1705020
  - This product can help a building to meet requirements of Green Building Rating Systems, e.g. LEED®, BREEAM®, DGNB

Single-lever mixer for combining with rinsing/Profi spray only

	Brushed Platinum	33 826 888-06
	Chrome	33 826 888-00
	Platinum	33 826 888-08
	Durabrass (23kt Gold)	33 826 888-09
	Dark Chrome	33 826 888-19
	Brushed Durabrass (23kt Gold)	33 826 888-28
	Matte Black	33 826 888-33
	Brushed Champagne (22kt Gold)	33 826 888-46
	Champagne (22kt Gold)	33 826 888-47
	Brushed Chrome	33 826 888-93
	Brushed Dark Platinum	33 826 888-99

Recommended miscellaneous



**Profi spray set - Brushed Platinum**
27 789 970-06

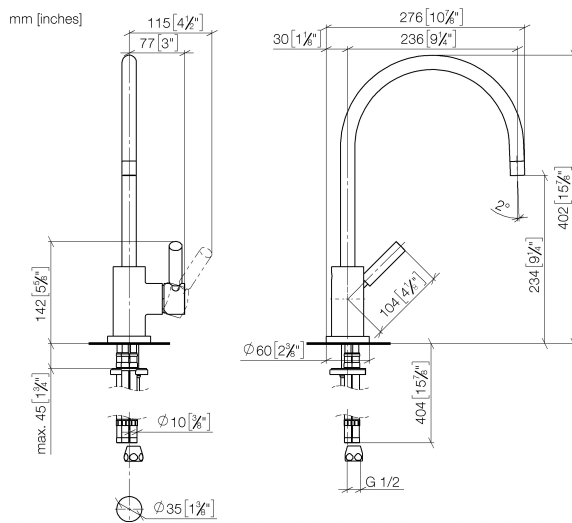
Recommended miscellaneous



**Rinsing spray set - Brushed Platinum**
27 721 970-06

## TARA Single-lever mixer for rinsing/Profi spray - Brushed Platinum

33 826 888



### Flow rate chart



### Certificates

LGA\_18901.

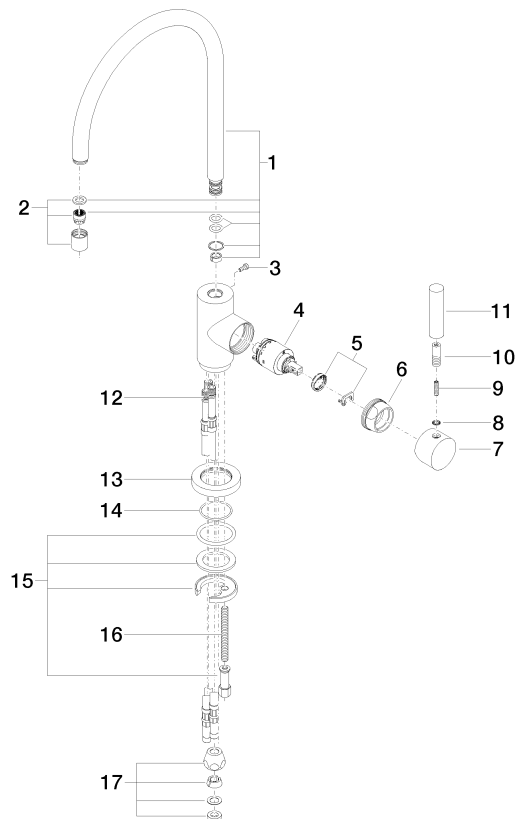
ETA\_18524.

WRAS\_2311044.

## TARA Single-lever mixer for rinsing/Profi spray - Brushed Platinum

33 826 888

Parts for other  
finishes can be found  
here: [Chrome](#)



### Spare parts list

No.	Item Number	Name	Quantity used	Delivery time
1	90 28 22 049 02-06	spout	1	10
2	90 23 01 028 03-06	aerator	1	10
3	09 30 30 054 90	screw	1	2
4	90 15 05 065 00 90	cartridge	1	2
5	90 28 10 148 00 90	accessories	1	2
6	09 24 04 107-06	nut	1	10
7	90 20 88 040 00-06	handle	1	10
8	90 30 11 032 00 90	disc	1	2
9	09 31 11 010 90	pin	1	2
10	90 24 04 048 00-06	nipple	1	10
11	11 170 880-06	handle	1	10
12	04 30 04 064 00 90	hose	3	60
13	09 28 10 055-06	rosette	1	10
14	09 14 10 034 90	seal	1	2
15	04 30 11 038 00 90	fixing set	1	2
16	09 31 11 011 90	pin	1	2
17	90 23 30 040 00-06	threaded connector	1	10