

TARA Single-lever mixer for rinsing/Profi spray - Brushed Chrome

TARA

33 836 888 Product version from 4/1/2024



- 235mm projection
 - pivotable spout 360°
 - air-enriched flow
 - height of mixer 400 mm
 - height up to aerator 230 mm
 - single-lever mixer hole diameter 35mm
 - max. flow 7 l/min at 3 bar flow pressure
 - lead-free
 - This product can help a building meet the requirements of Green Building Rating Systems, e.g. LEED®, BREEAM®, DGNB
- Single-lever mixer for combining with rinsing/Profi spray only

	Brushed Chrome	33 836 888-93
	Chrome	33 836 888-00
	Brushed Platinum	33 836 888-06
	Platinum	33 836 888-08
	Durabrass (23kt Gold)	33 836 888-09
	Dark Chrome	33 836 888-19
	Brushed Durabrass (23kt Gold)	33 836 888-28
	Matte Black	33 836 888-33
	Brushed Dark Brass	33 836 888-39
	Brushed Bronze	33 836 888-42
	Brushed Champagne (22kt Gold)	33 836 888-46
	Champagne (22kt Gold)	33 836 888-47
	Brushed Dark Platinum	33 836 888-99

Recommended miscellaneous

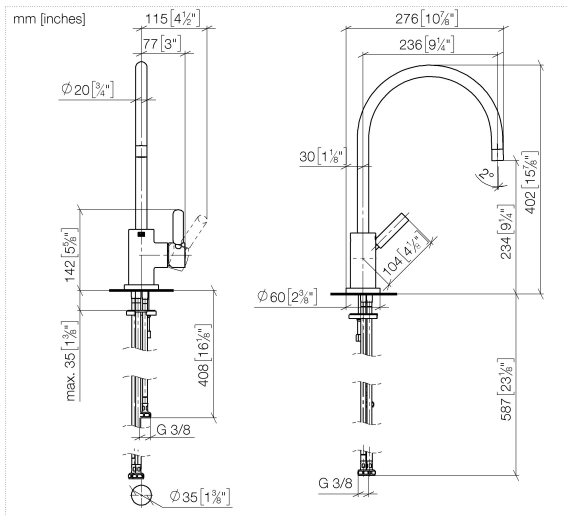


Strainer waste with control handle
10 710 970-93
 - Brushed Chrome

Recommended miscellaneous



Dispenser with rosette - Brushed Chrome
82 444 970-93



Flow rate chart



Codes & Standards

DIN 4109

ISO 3822

Ü-Zeichen



TARA Single-lever mixer for rinsing/Profi spray - Brushed Chrome

TARA

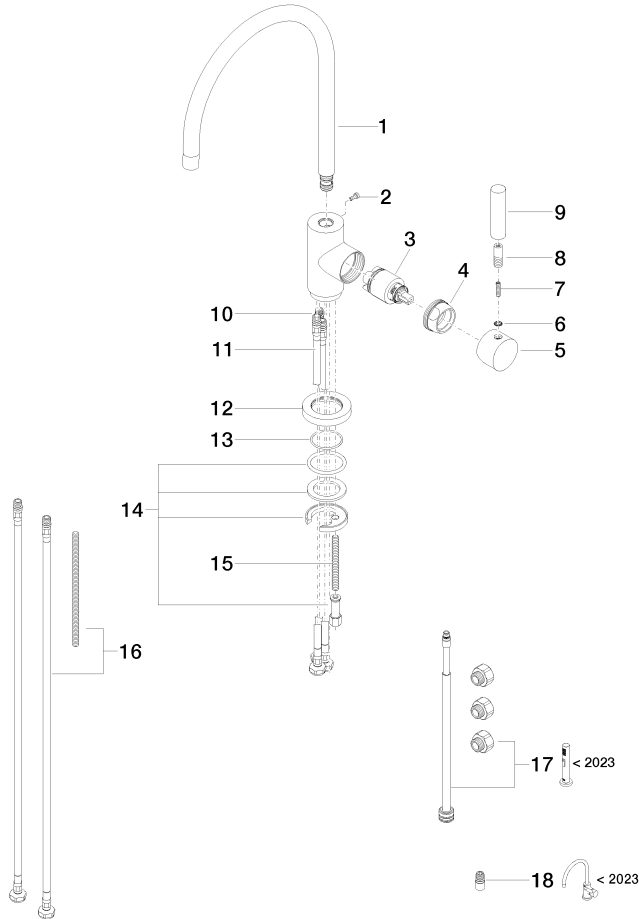
33 836 888 Product version from 4/1/2024

Certificates and sustainability

LGA_38	LGA_38	LGA_38
--------	--------	--------

33 836 888 Product version from 4/1/2024

Parts for other
finishes can be found
here: [Chrome](#)



Spare parts list

No.	Item Number	Name	Quantity used	Delivery time
9	11 170 880-93	handle	1.00	60
5	90 20 88 040 00-93	handle	1.00	20
1	90 28 22 049 02-93	spout	1.00	20
4	09 24 04 107-93	nut	1.00	20
18	90 24 03 537 01 90	adaptor	1.00	2
2	09 30 30 054 90	screw	1.00	2
6	90 30 11 032 00 90	disc	1.00	2
17	90 17 09 046 13 90	conversion kit	1.00	2
11	04 30 04 105 00 90	hose	2.00	2
14	04 30 11 038 00 90	fixing set	1.00	2
13	09 14 10 034 90	seal	1.00	2
12	09 28 10 055-93	rosette	1.00	60
16	12 803 970 90	extension	1.00	60
8	90 24 04 048 00-93	nipple	1.00	20
10	04 30 04 104 00 90	hose	1.00	2
15	09 31 11 011 90	pin	1.00	2
3	90 15 05 065 00 90	cartridge	1.00	2
7	09 31 11 010 90	pin	1.00	2