

# ENO Single-lever mixer Pull-out - Brushed Chrome

ENO

33 845 760



- 220mm projection
- pivotable spout 130°
- air-enriched flow
- height of mixer 288 mm
- height up to aerator 187 mm
- hole diameter 35 mm
- 1600mm metal shower hose
- max. flow 10 l/min at 3 bar flow pressure
- lead-free
- This product can help a building meet the requirements of Green Building Rating Systems, e.g. LEED®, BREEAM®, DGNB

Intrinsic protection against back flow.

	Brushed Chrome	33 845 760-93
	Chrome	33 845 760-00
	Brushed Platinum	33 845 760-06
	Platinum	33 845 760-08
	Dark Chrome	33 845 760-19
	Brushed Durabronze (23kt Gold)	33 845 760-28
	Brushed Champagne (22kt Gold)	33 845 760-46
	Champagne (22kt Gold)	33 845 760-47
	Brushed Dark Platinum	33 845 760-99

## Recommended miscellaneous



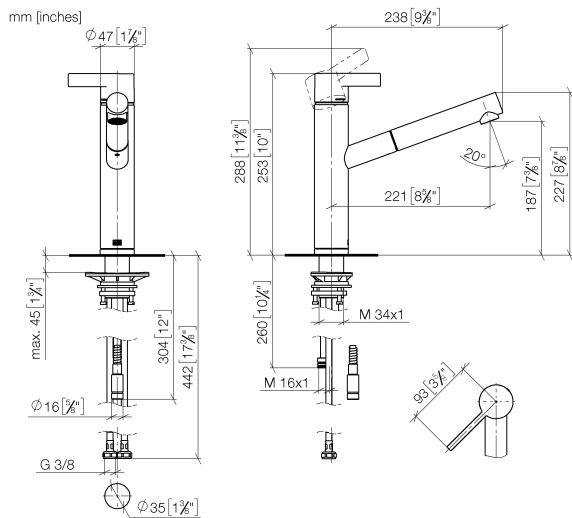
**Dispenser without rosette -  
Brushed Chrome** 82 424 970-93

## Recommended miscellaneous

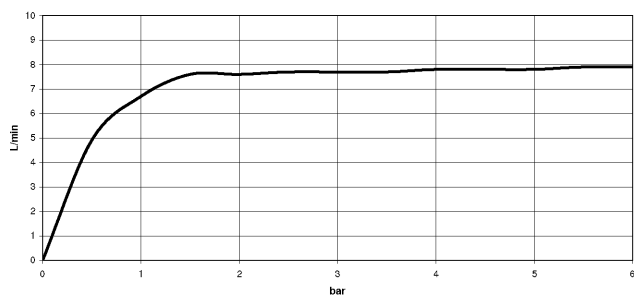


**Strainer waste with control handle  
- Brushed Chrome** 10 712 970-93

33 845 760



### Flow rate chart



### Codes & Standards

Executive Order  
no. 1007



## ENO Single-lever mixer Pull-out - Brushed Chrome

---

ENO

33 845 760

Certificates

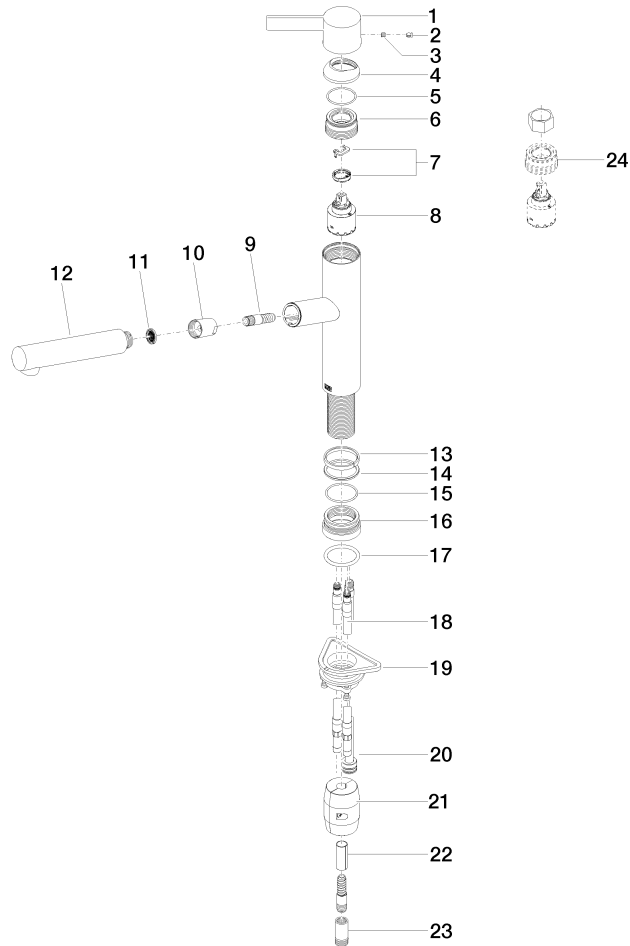
---

GDV\_0400

33 845 760

**Product version from 1/7/2021 to 5/7/2021**

Parts for other  
finishes can be found  
here: [Chrome](#)





## ENO Single-lever mixer Pull-out - Brushed Chrome

---

ENO

33 845 760

### **Spare parts list**

**Product version from 1/7/2021 to 5/7/2021**