

TARA ULTRA PIVOT Single-lever mixer - Champagne (22kt Gold)

TARA ULTRA

33 845 875



- 552mm projection
- pivotable spout 360°
- air-enriched flow
- height of mixer 372 mm
- height up to aerator 290 mm
- rosette 55 mm
- hole diameter 30 mm
- max. flow 8 l/min at 3 bar flow pressure
- lead-free
- This product can help a building meet the requirements of Green Building Rating Systems, e.g. LEED®, BREEAM®, DGNB

| | | |
|--|-------------------------------|---------------|
|  | Champagne (22kt Gold) | 33 845 875-47 |
|  | Chrome | 33 845 875-00 |
|  | Brushed Platinum | 33 845 875-06 |
|  | Platinum | 33 845 875-08 |
|  | Durabrand (23kt Gold) | 33 845 875-09 |
|  | Dark Chrome | 33 845 875-19 |
|  | Brushed Durabrand (23kt Gold) | 33 845 875-28 |
|  | Brushed Champagne (22kt Gold) | 33 845 875-46 |
|  | Brushed Chrome | 33 845 875-93 |
|  | Brushed Dark Platinum | 33 845 875-99 |

Recommended miscellaneous

**Dispenser with rosette -
Champagne (22kt Gold)**

82 444 970-47



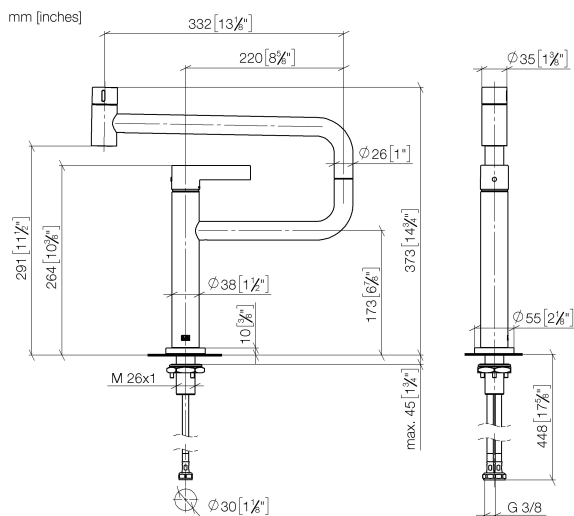
Recommended miscellaneous

**Strainer waste with control handle -
Champagne (22kt Gold)**

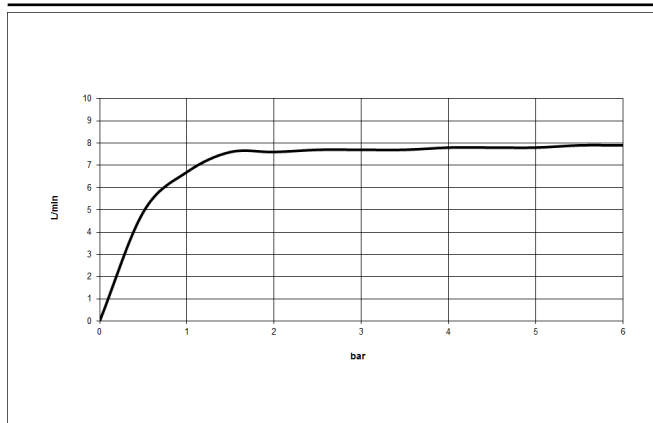
10 710 970-47



33 845 875



Flow rate chart



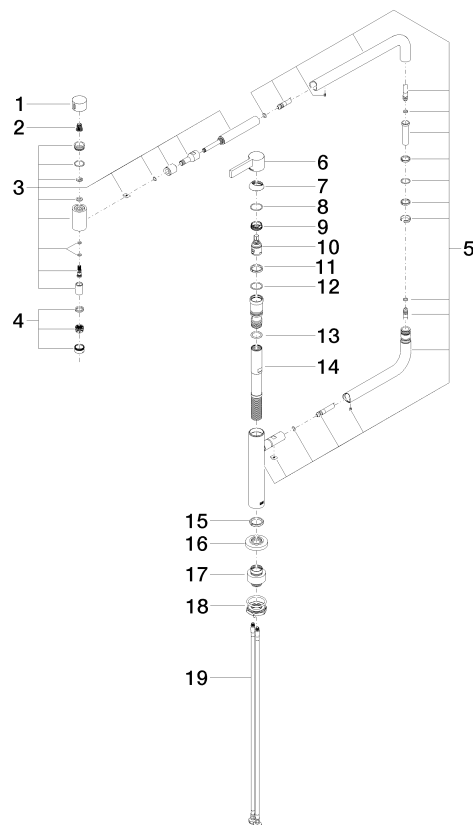
Certificates

LGA_28059.

GDV_0400292.

33 845 875

Parts for other
finishes can be found
here: [Chrome](#)



Spare parts list

| No. | Item Number | Name | Quantity used | Delivery time |
|-----|--------------------|-----------------|---------------|---------------|
| 1 | 09 20 62 025-47 | handle | 1 | 30 |
| 2 | 90 12 12 002 00 90 | fixing cap | 1 | 2 |
| 3 | 90 19 87 001 00-47 | spout | 1 | 30 |
| 4 | 90 23 01 026 07-47 | aerator | 1 | 30 |
| 5 | 90 28 22 257 00-47 | joint | 1 | 30 |
| 6 | 90 20 87 004 00-47 | handle | 1 | 30 |
| 7 | 09 28 30 013-47 | cover | 1 | 30 |
| 8 | 09 14 10 091 90 | seal | 1 | 2 |
| 9 | 09 24 04 266 90 | nut | 1 | 2 |
| 10 | 90 15 05 042 00 90 | cartridge | 1 | 2 |
| 11 | 09 28 10 156 90 | ring | 1 | 2 |
| 12 | 90 14 10 063 00 90 | seal | 1 | 2 |
| 13 | 09 14 10 081 90 | seal | 1 | 2 |
| 14 | 09 30 01 126 90 | connection | 1 | 2 |
| 15 | 09 28 10 159 90 | ring | 1 | 2 |
| 16 | 09 27 87 033-47 | rosette | 1 | 30 |
| 17 | 12 845 970 90 | Extension set - | 1 | 2 |
| 18 | 04 30 11 085 87 90 | fixing set | 1 | 2 |
| 19 | 04 30 04 101 00 90 | hose | 2 | 2 |