

## TARA ULTRA Single-lever mixer Pull-down with spray function - Chrome

TARA ULTRA

33 870 875 Product version from 2/26/2015 to 10/30/2024



- 240mm projection
- pivotable spout 360°
- Optional swivel limiter available with swivel limiter set 12 823 970 90
- laminar and spray flow
- height of mixer 500 mm
- height up to laminar flow regulator 240 mm
- hole diameter 35 mm
- 1800 mm metal shower hose
- sprayface with anti-scaling system
- max. flow 10.4 l/min at 3 bar flow pressure
- lead-free
- Flow modes can be changed while the water is running
- This product can help a building meet the requirements of Green Building Rating Systems, e.g. LEED®, BREEAM®, DGNB

Intrinsic protection against back flow.

|   |                                |               |
|---|--------------------------------|---------------|
|    | Chrome                         | 33 870 875-00 |
|    | Brushed Platinum               | 33 870 875-06 |
|    | Platinum                       | 33 870 875-08 |
|    | Durabronze (23kt Gold)         | 33 870 875-09 |
|    | Dark Chrome                    | 33 870 875-19 |
|    | Brushed Durabronze (23kt Gold) | 33 870 875-28 |
|    | Matte Black                    | 33 870 875-33 |
|    | Brushed Bronze                 | 33 870 875-42 |
|    | Brushed Champagne (22kt Gold)  | 33 870 875-46 |
|   | Champagne (22kt Gold)          | 33 870 875-47 |
|  | Brushed Chrome                 | 33 870 875-93 |
|  | Brushed Dark Platinum          | 33 870 875-99 |

### Recommended miscellaneous

**Swivel limitation set -**

12 823 970 90



### Recommended miscellaneous

**Strainer waste with control handle - Chrome**



### Recommended miscellaneous

**Dispenser without rosette - Chrome**

82 424 970-00



33 870 875 Product version from 2/26/2015 to 10/30/2024

mm [inches]



## Flow rate chart



## Codes & Standards

DIN 4109

EN 1717

Executive Order  
no. 1007

ISO 3822

## Ü-Zeichen



## TARA ULTRA Single-lever mixer Pull-down with spray function - Chrome

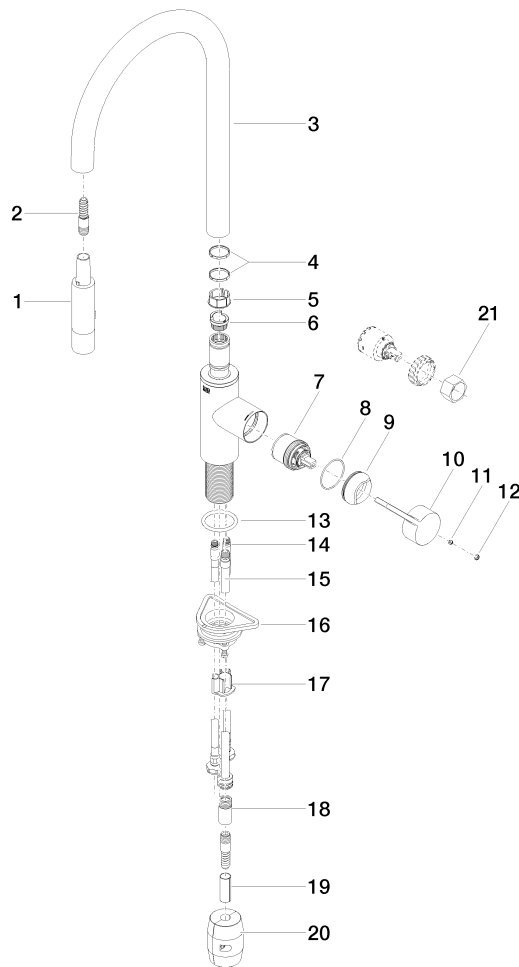
TARA ULTRA

33 870 875 Product version from 2/26/2015 to 10/30/2024

### Certificates and sustainability

Belgaqua\_21-027-2 LGA\_28

GDV\_0400



## Spare parts list

| No. | Item Number           | Name        | Quantity used | Delivery time |
|-----|-----------------------|-------------|---------------|---------------|
|     | 6 09 30 11 203 90     | ring        | 1.00          | 2             |
|     | 20 04 21 50 010 00 90 | accessories | 1.00          | 2             |
|     | 2 04 30 02 120 00-00  | hose        | 1.00          | 10            |
|     | 8 09 14 10 190 90     | seal        | 1.00          | 2             |
|     | 15 04 28 20 067 00 90 | pipe        | 1.00          | 2             |
|     | 3 90 28 22 304 00-00  | spout       | 1.00          | 10            |
|     | 13 09 14 10 036 90    | seal        | 1.00          | 2             |
|     | 5 09 18 40 186 90     | sleeve      | 1.00          | 2             |
|     | 12 90 31 20 087 00-00 | plug        | 1.00          | 10            |
|     | 17 09 20 93 056 90    | insert      | 1.00          | 2             |
|     | 16 04 30 11 040 00 90 | fixing set  | 1.00          | 2             |
|     | 14 04 30 04 101 00 90 | hose        | 2.00          | 2             |
|     | 9 09 28 30 030-00     | cover       | 1.00          | 10            |
|     | 19 09 30 03 038 90    | hose        | 1.00          | 2             |
|     | 4 09 28 10 160 90     | ring        | 2.00          | 2             |
|     | 18 90 24 03 253 00 90 | adaptor     | 1.00          | 2             |
|     | 10 09 20 87 020-00    | handle      | 1.00          | 10            |
|     | 11 90 31 11 063 00 90 | pin         | 1.00          | 2             |
|     | 21 90 30 09 031 00 90 | key         | 1.00          | 2             |
|     | 1 90 12 11 148 00-00  | shower      | 1.00          | 60            |
|     | 7 90 15 05 064 05 90  | cartridge   | 1.00          | 2             |