

SYNC Single-lever mixer Pull-down with spray function - Platinum

SYNC

33 875 895



- 240mm projection
- pivotable spout 360°
- Optional swivel limiter available with swivel limiter set 12 821 970 90
- laminar and spray flow
- height of mixer 420 mm
- height up to laminar flow regulator 240 mm
- hole diameter 35 mm
- 1800 mm metal shower hose
- sprayface with anti-scaling system
- max. flow 10.4 l/min at 3 bar flow pressure
- lead-free
- This product can help a building meet the requirements of Green Building Rating Systems, e.g. LEED®, BREEAM®, DGNB

Intrinsic protection against back flow.

| | | |
|--|-------------------------------|---------------|
|  | Platinum | 33 875 895-08 |
|  | Chrome | 33 875 895-00 |
|  | Brushed Platinum | 33 875 895-06 |
|  | Durabrand (23kt Gold) | 33 875 895-09 |
|  | Dark Chrome | 33 875 895-19 |
|  | Brushed Durabrand (23kt Gold) | 33 875 895-28 |
|  | Matte Black | 33 875 895-33 |
|  | Brushed Champagne (22kt Gold) | 33 875 895-46 |
|  | Champagne (22kt Gold) | 33 875 895-47 |
|  | Brushed Chrome | 33 875 895-93 |
|  | Brushed Dark Platinum | 33 875 895-99 |

Recommended miscellaneous

Swivel limitation set - 12 821 970 90



Recommended miscellaneous

Strainer waste with control handle - Platinum 10 712 970-08

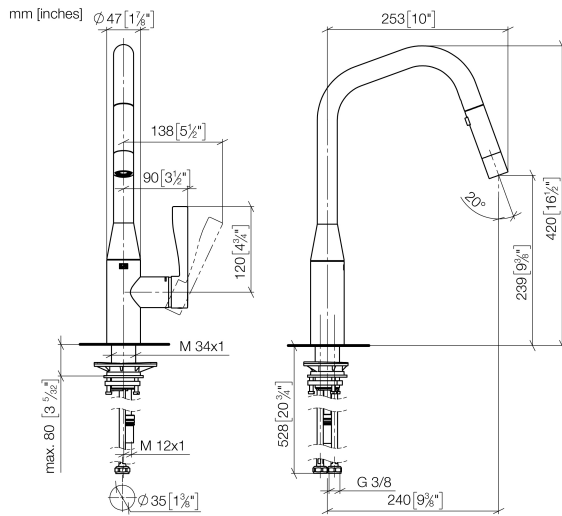


Recommended miscellaneous

Dispenser without rosette - Platinum 82 424 970-08



33 875 895



Flow rate chart



Codes & Standards

DIN 4109

EN 1717

Executive Order
no. 1007

ISO 3822

Ü-Zeichen



SYNC Single-lever mixer Pull-down with spray function - Platinum

SYNC

33 875 895

Certificates

GDV_0400

Belgaqua_21-027-2 LGA_28

33 875 895

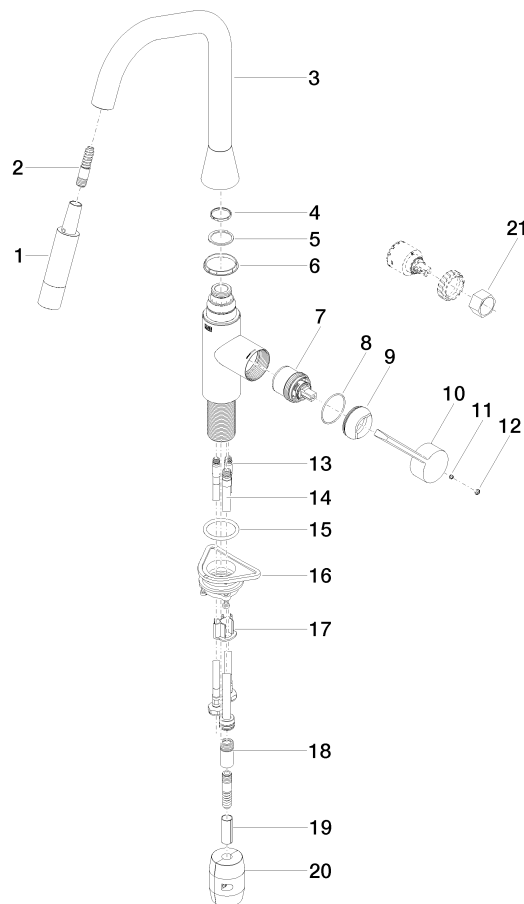
Product version from 2/26/2015 to 1/7/2021

Product version from 1/7/2021 to 4/29/2021

Product version from 5/1/2021 to 6/1/2021

Product version from 6/1/2021 to 7/1/2021

Product version from 7/1/2021





SYNC Single-lever mixer Pull-down with spray function - Platinum

SYNC

33 875 895

Spare parts list

Product version from 2/26/2015 to 1/7/2021

Product version from 1/7/2021 to 4/29/2021

Product version from 5/1/2021 to 6/1/2021

Product version from 6/1/2021 to 7/1/2021

Product version from 7/1/2021

| No. | Item Number | Name | Quantity used | Delivery time |
|-----|--------------------|--------|---------------|---------------|
| | 90 12 11 148 00-08 | shower | 22 | 40 |