






EDITION PRO Shower thermostat for wall mounting - Brushed Chrome

34 442 626



- slide-on rosettes Ø 70 mm
- gauge 150 mm - 13 mm
- rotary diverter with volume control and shut-off function
- 3/8" shower outlet
- with volume control
- WRAS 2204005

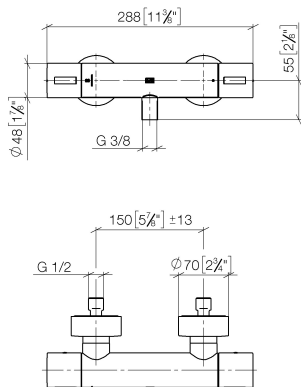
Intrinsic protection against back flow.

	Brushed Chrome	34 442 626-93
	Chrome	34 442 626-00
	Matte Black	34 442 626-33

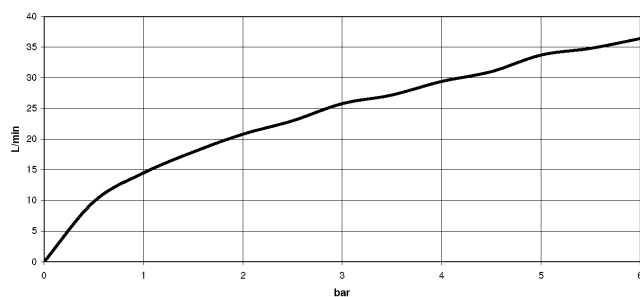
## EDITION PRO Shower thermostat for wall mounting - Brushed Chrome

34 442 626

mm [inches]



### Flow rate chart



### Codes & Standards

DIN 4109

EN 1717

ISO 3822

Scottish Water  
Byelaws

UK Water Supply  
Regulations

Ü-Zeichen



## EDITION PRO Shower thermostat for wall mounting - Brushed Chrome

---

34 442 626

### Certificates

---

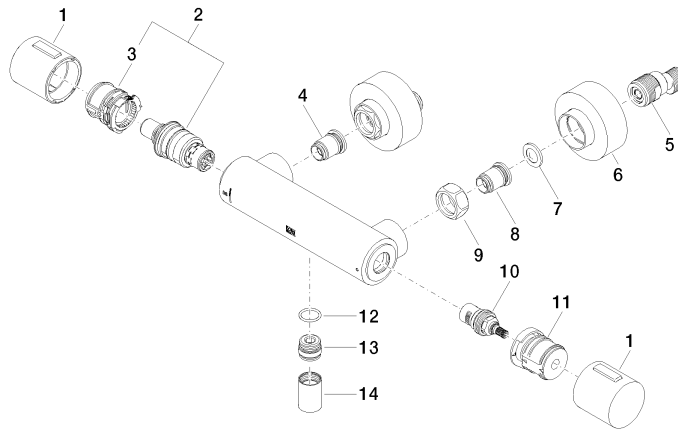
Belgaqua\_21-384-2 LGA\_29

WRAS\_2204

## EDITION PRO Shower thermostat for wall mounting - Brushed Chrome

34 442 626

Parts for other  
finishes can be found  
here: [Chrome](#)





EDITION PRO Shower thermostat for wall mounting - Brushed Chrome

34 442 626

Spare parts list

No.	Item Number	Name	Quantity used	Delivery time
	90 17 33 015 00-93	handle	19	20