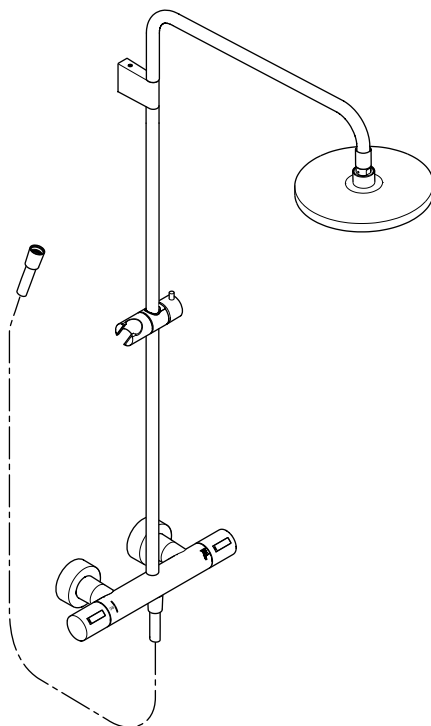
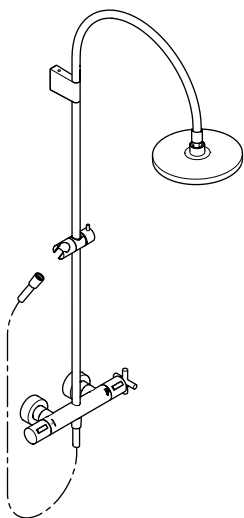


# Installation instructions

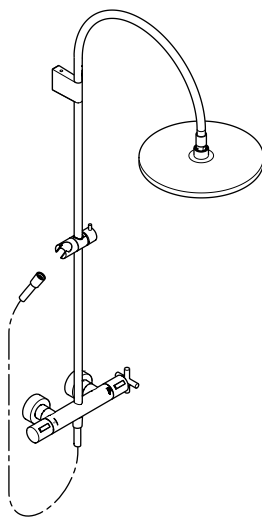
Monteringsanvisning



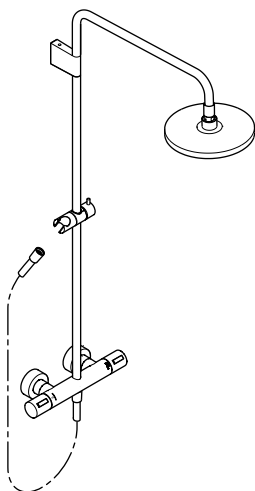
34 463 892-FF 0070 / 34 465 892-FF 0070 /  
34 464 809-FF 0070 / 34 465 809-FF 0070 /  
34 464 979-FF 0070 / 34 465 979-FF 0070 /  
34 463 980-FF 0070 / 34 464 980-FF 0070



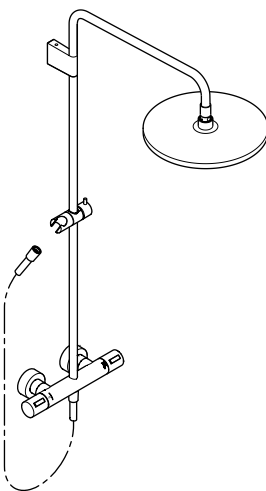
34 463 892-FF 0070



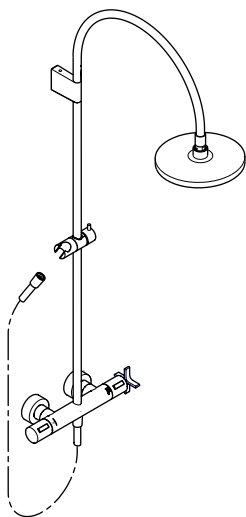
34 465 892-FF 0070



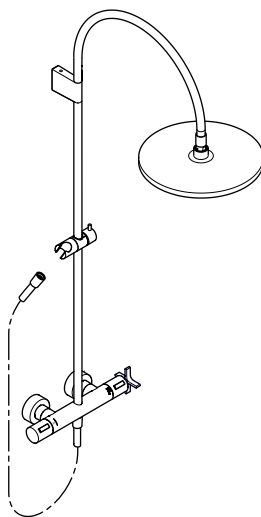
34 464 979-FF0070



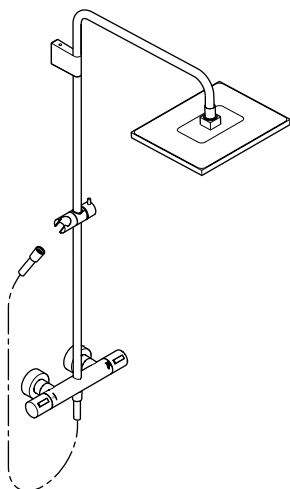
34 465 979-FF 0070



34 464 809-FF 0070



34 465 809-FF 0070



34 463 980-FF 0070 /  
34 464 980-FF 0070



**ATTENTION!**

This symbol warns of property damages due to non-compliance with the instructions.



**NOTICE!**

This symbol calls attention to important information.

Please read this manual and follow the instructions.

All manuals and documents belonging to the product have to be passed on to the end user. Otherwise the producer liability may be limited in case of damage.

All work has to be carried out by a competent and qualified plumber according national regulations and regulations of the local water supply companies.

Local accident prevention regulations are to be followed with priority.

Operating conditions and dimensions can be found in the appendix.

For questions or uncertainties regarding installation or operation, please contact the Technical Service of Dornbracht.

You can find relevant contact details on the back of this manual and on the website of Dornbracht: [www.dornbracht.com](http://www.dornbracht.com)



**OBS!**

Denna symbol varnar för egendomsskador om anvisningarna inte beaktas.



**MEDDELANDE!**

Denna symbol gör användaren uppmärksam på viktig information.

Läs igenom bruksanvisningen och beakta anvisningarna.

Se deberán entregar todas las instrucciones y documentos del producto al usuario final. I annat fall kan tillverkarens ansvar vara begränsat om skador skulle uppstå.

Samtliga sanitetsarbeten ska genomföras av en behörig VVS-installatör enl. landsspecifika föreskrifter samt föreskrifterna från lokala vattenförsörjningsbolag.

Lokala arbetsmiljöregler ska alltid iakttas med högsta prioritet.

Driftsförhållanden och måttuppgifter finns i bilagan.

Om du har frågor eller är osäker på hur du ska montera eller använda produkten är du välkommen att kontakta Dornbrachts tekniska service.

Vår kontaktinformation hittar du på baksidan av dessa anvisningar samt på Dornbrachts hemsida: [www.dornbracht.com](http://www.dornbracht.com)

**GB** Care and maintenance by the user.  
**SE** Skötsel och service som utförs av användaren.



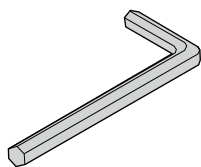
[www.dornbracht.com/care](http://www.dornbracht.com/care)

**GB** Technical information.  
**SE** Teknisk information.

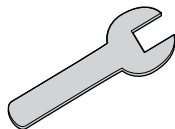
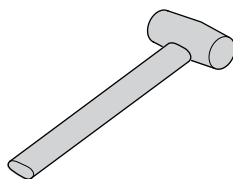
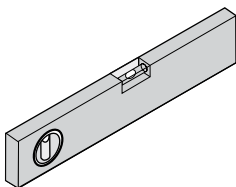


[td.dornbracht.com](http://td.dornbracht.com)

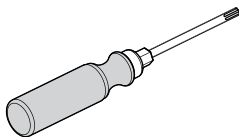
**GB** Required tools. **SE** Erforderliga verktyg.



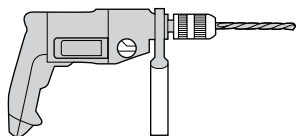
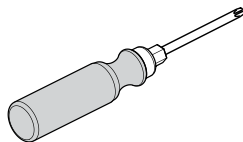
2,5 mm / 3 mm / 14 mm



30 SW



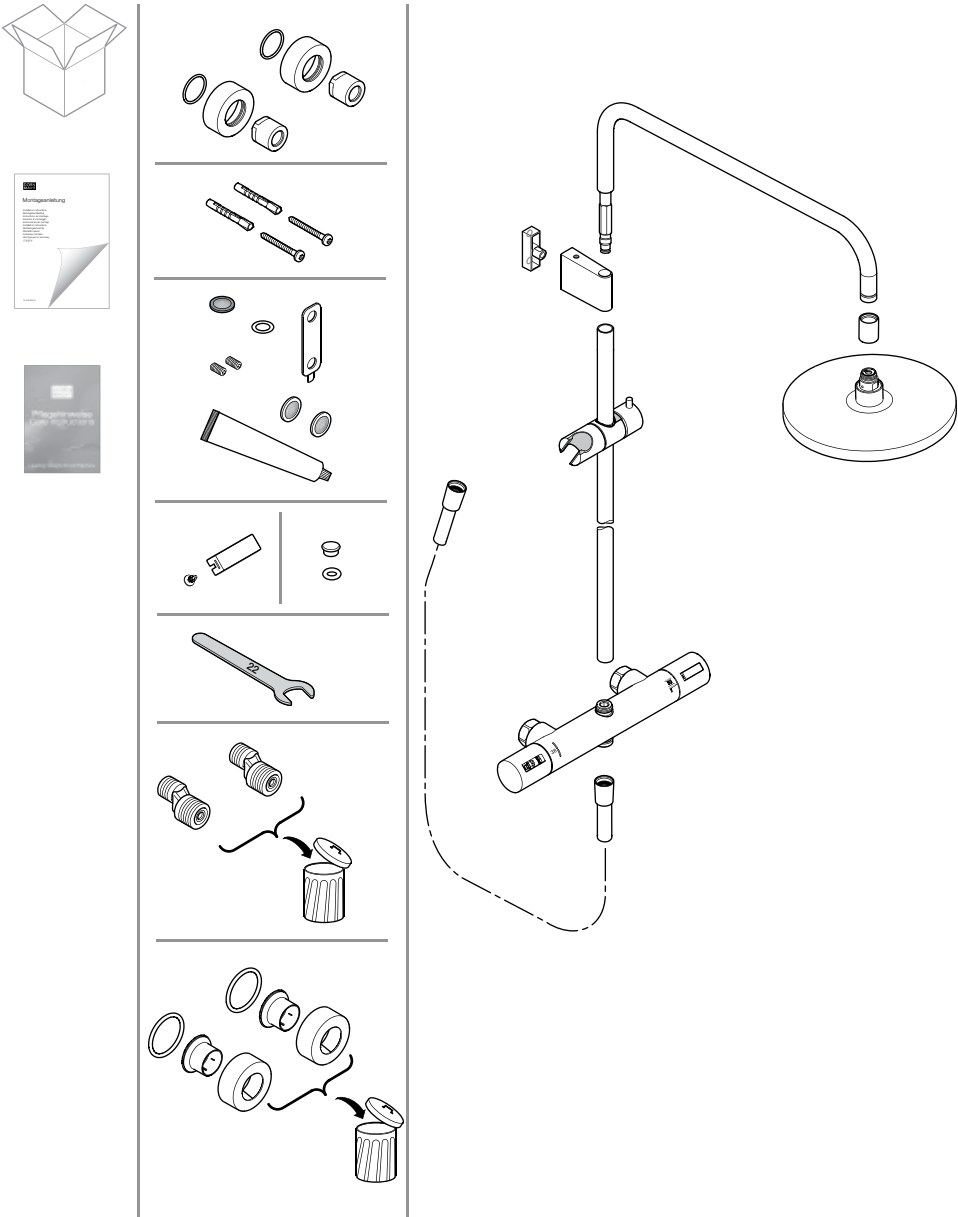
 TX 20



ø 6 mm

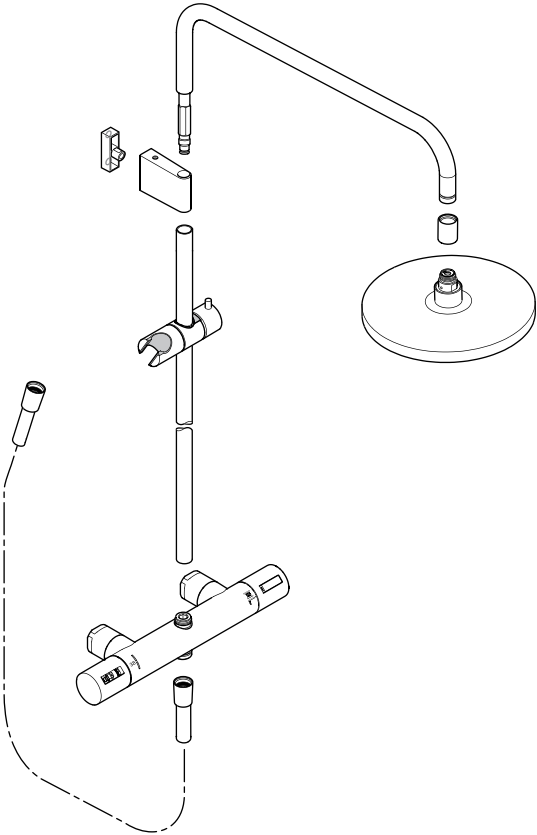
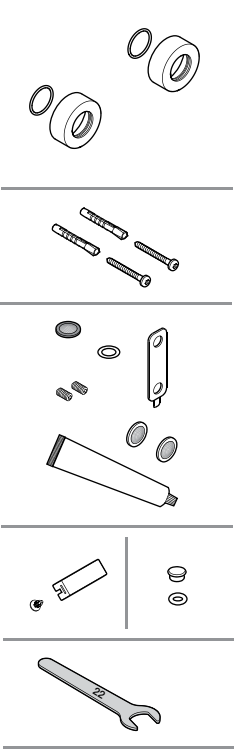
**GB** Parts supplied. **SE** Leveransomfång.

**a** 34 463 892-00 0070 / 34 465 892-00 0070 / 34 464 809-00 0070 / 34 465 809-00 0070 /  
34 464 979-00 0070 / 34 465 979-00 0070 / 34 463 980-00 0070 / 34 464 980-00 0070

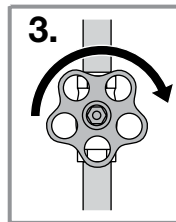
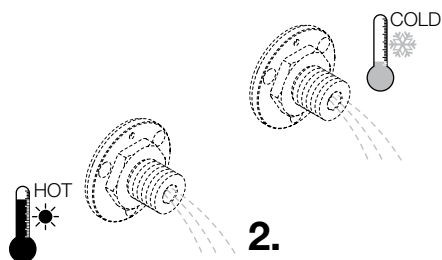
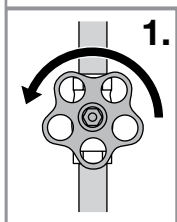


**GB** Parts supplied. **SE** Leveransomfång.

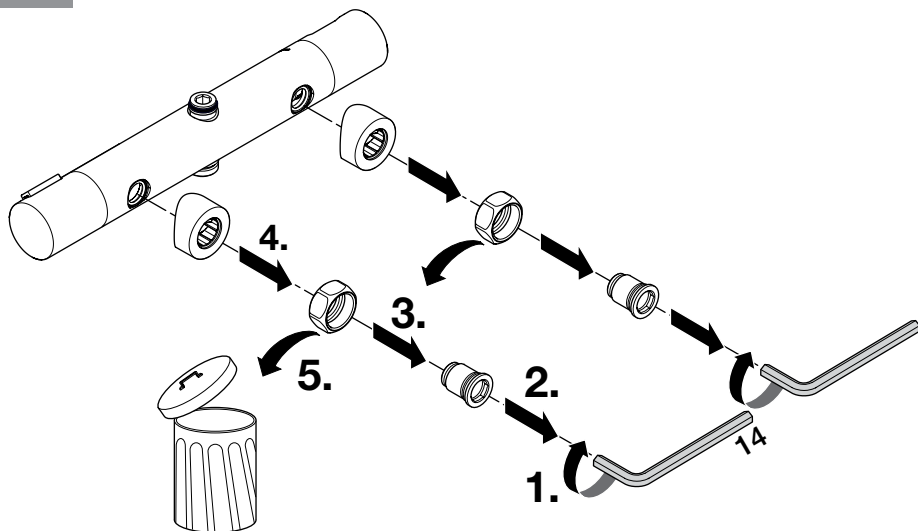
**b** 34 463 892-FF0 070 / 34 465 892-FF 0070 / 34 464 809-FF 0070 / 34 465 809-FF 0070  
34 464 979-FF 0070 / 34 465 979-FF 0070 / 34 463 980-FF 0070 / 34 464 980-FF 0070



**1**  
ab

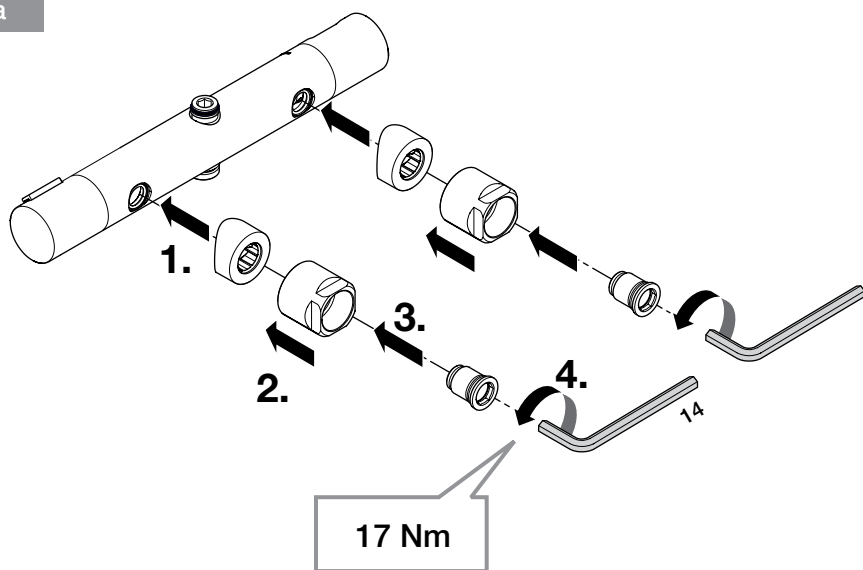


**2**  
a

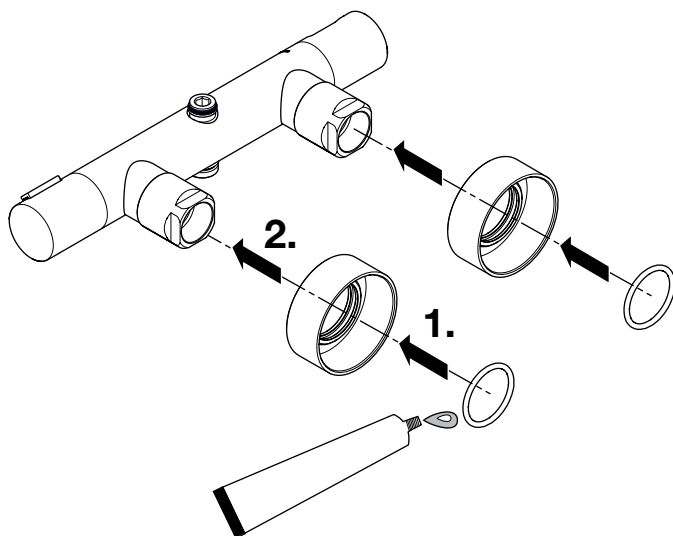


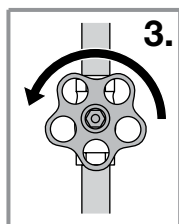
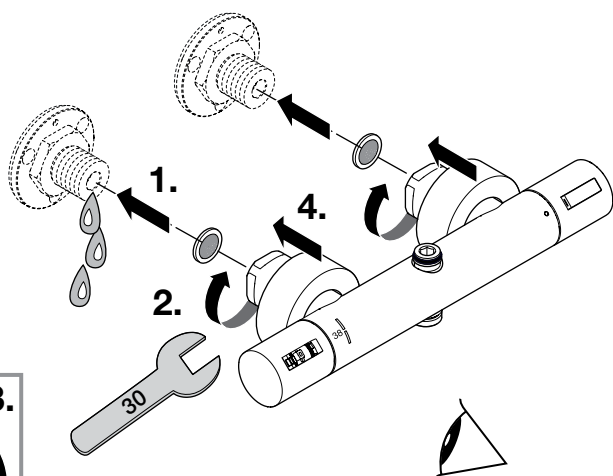


3  
a

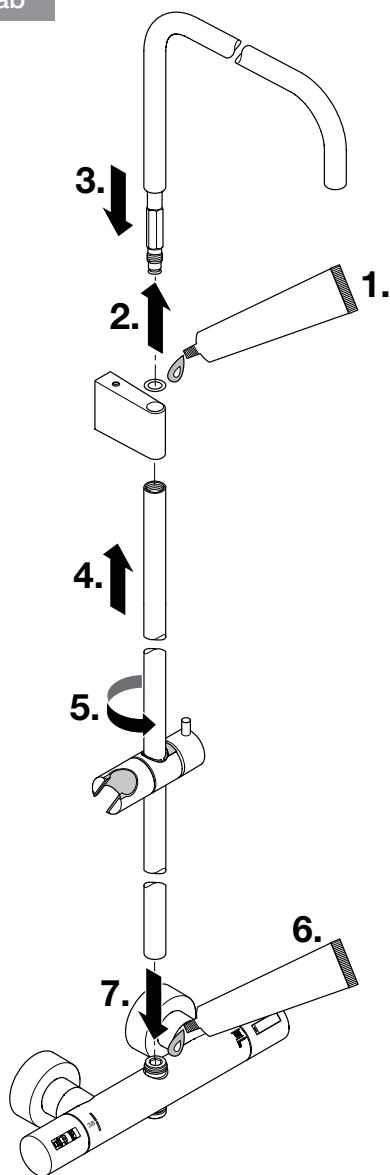


4  
ab

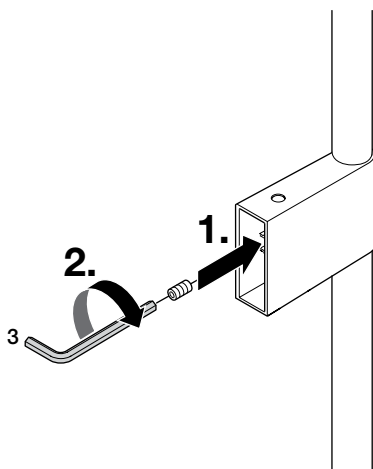




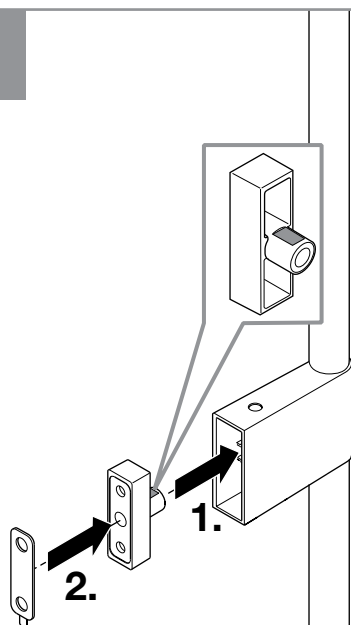
6  
ab



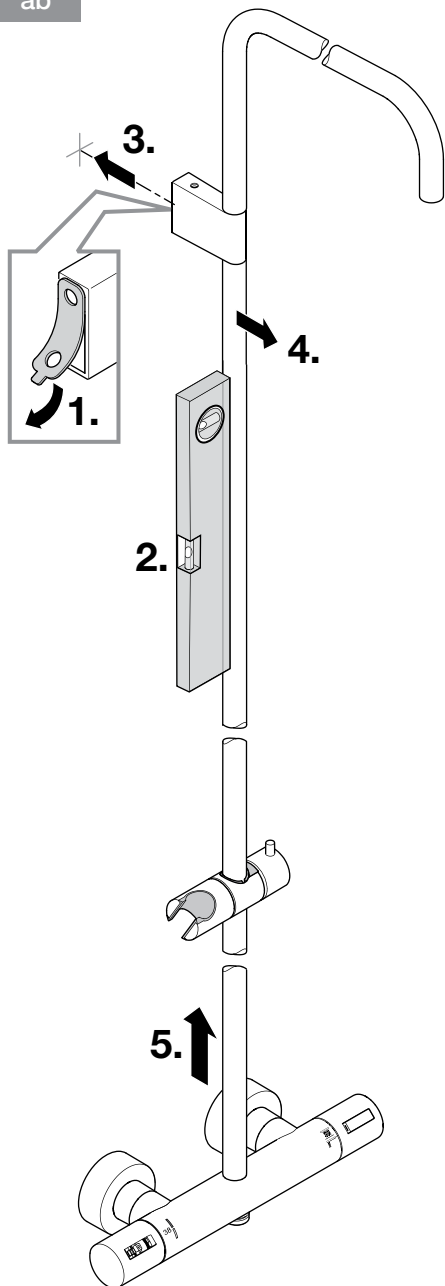
7  
ab



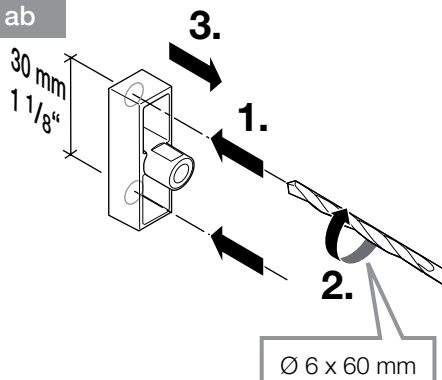
8  
ab



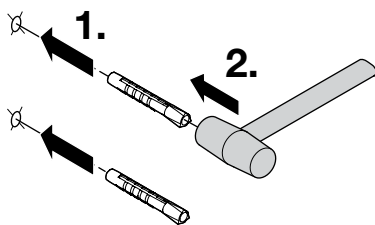
9  
ab



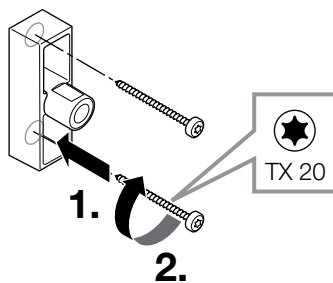
10  
ab



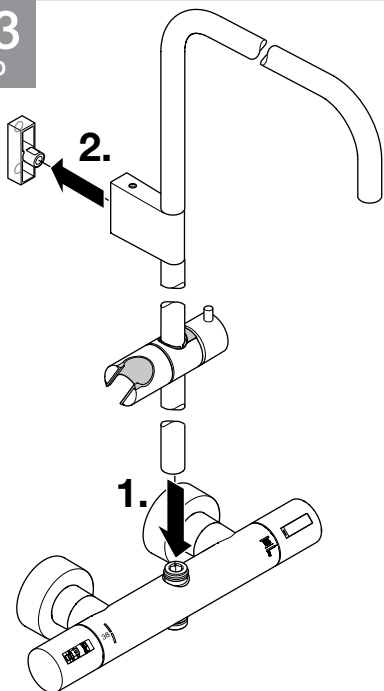
11  
ab



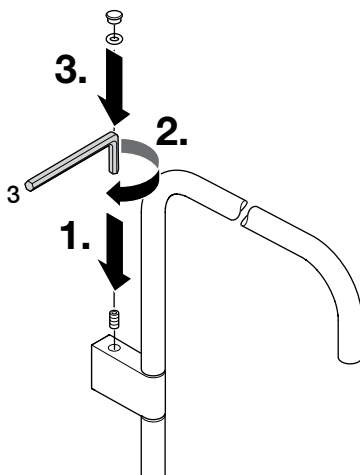
12  
ab



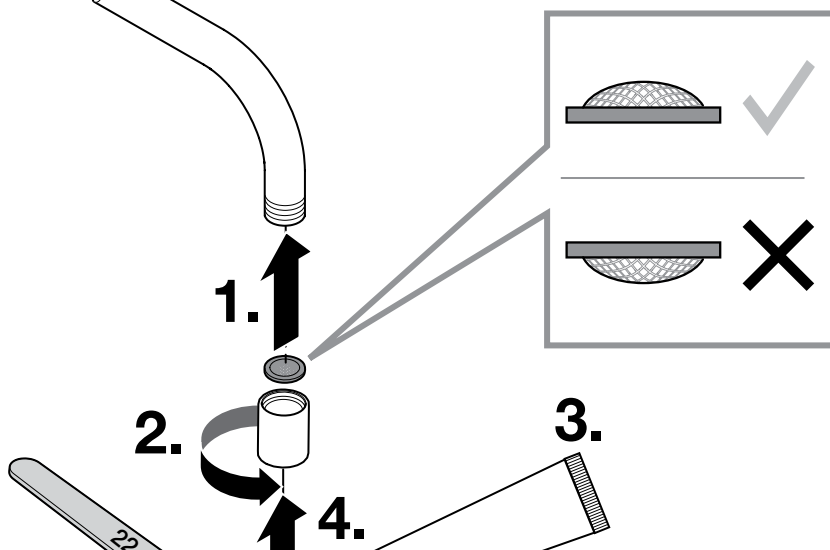
**13**  
ab

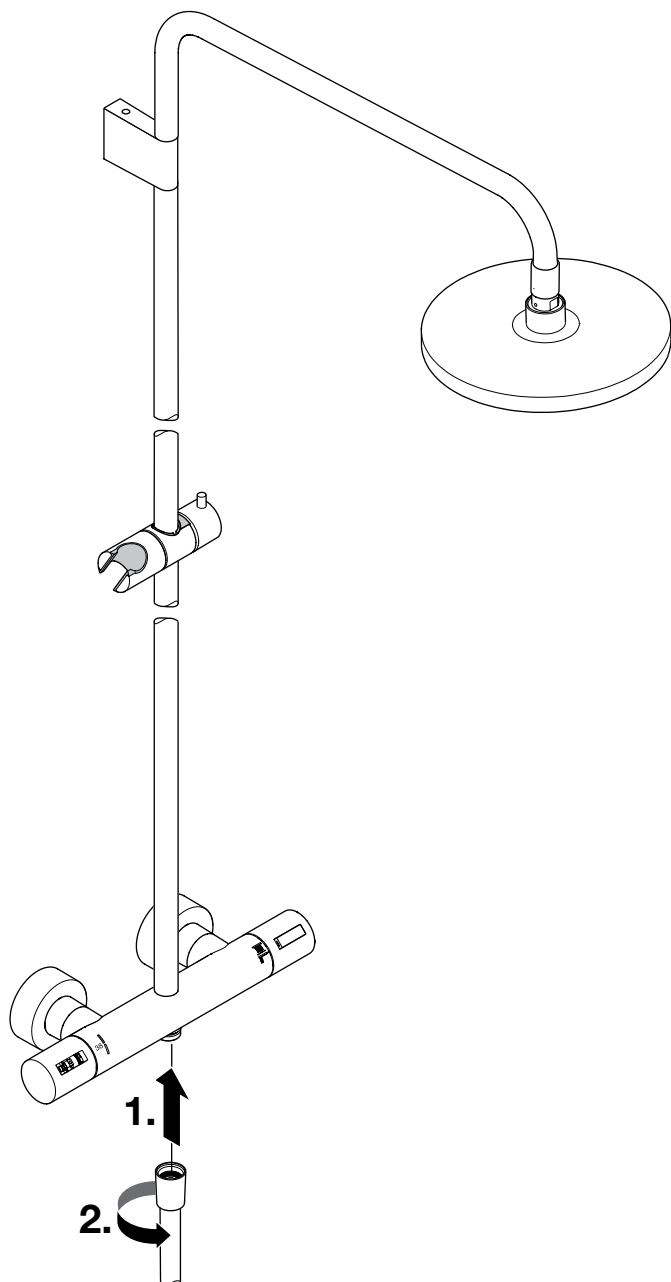


**14**  
ab

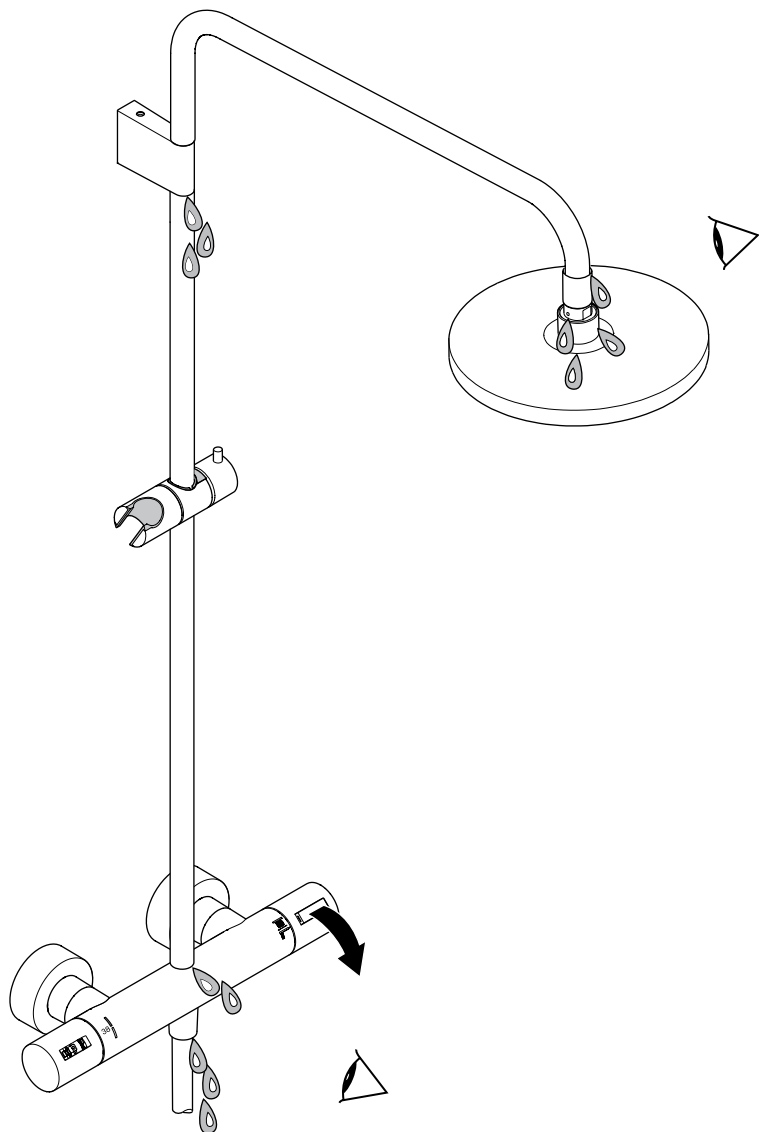


**15**  
ab



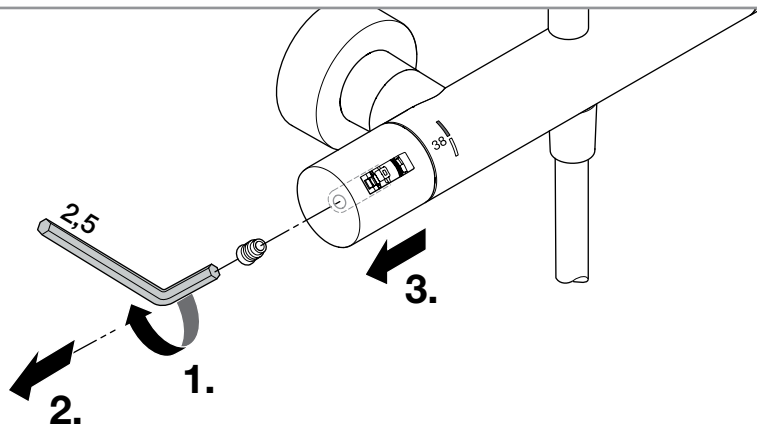


17  
ab

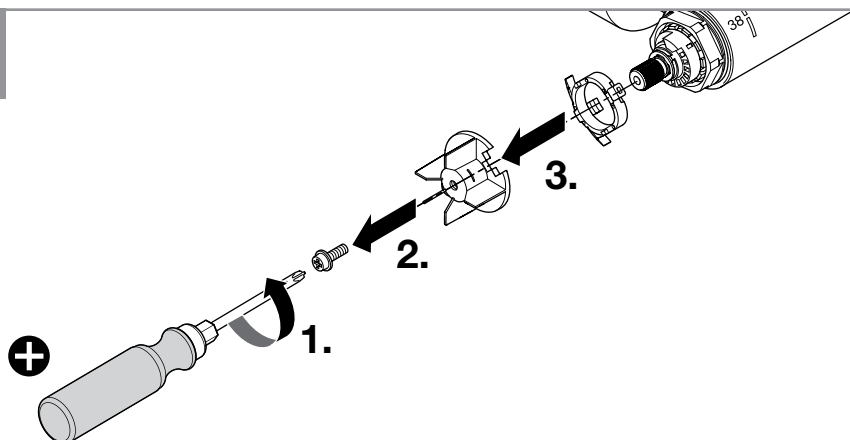


×

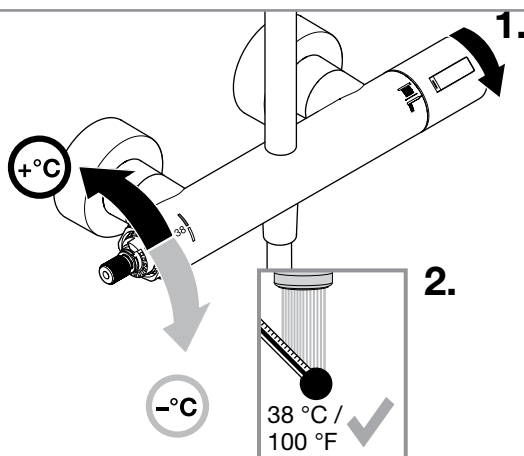
**18**  
ab



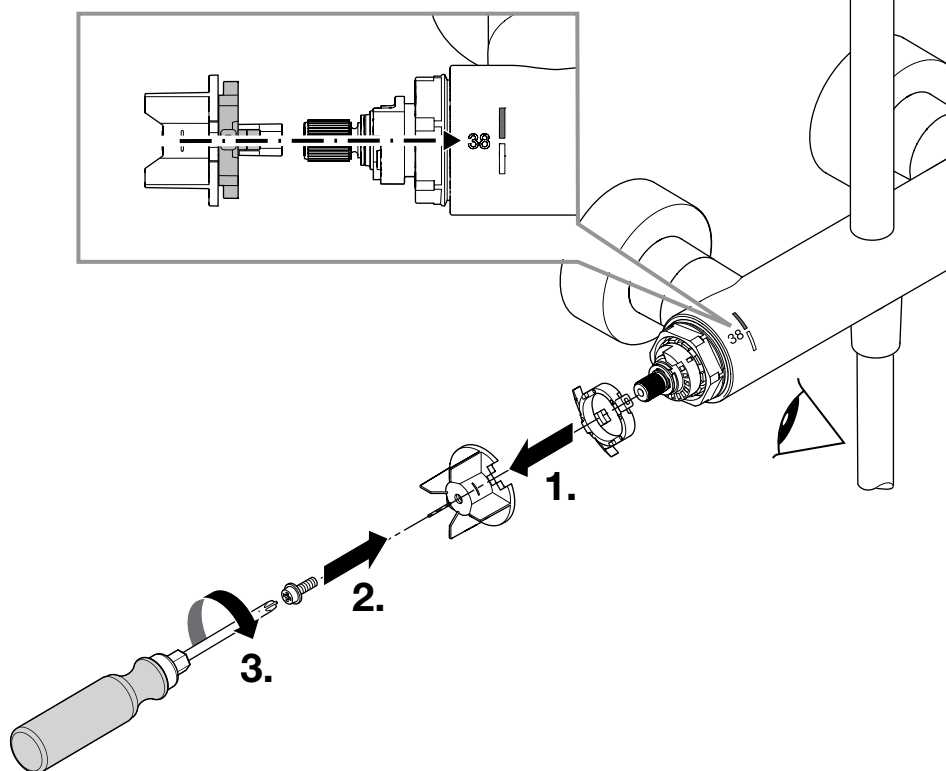
**19**  
ab



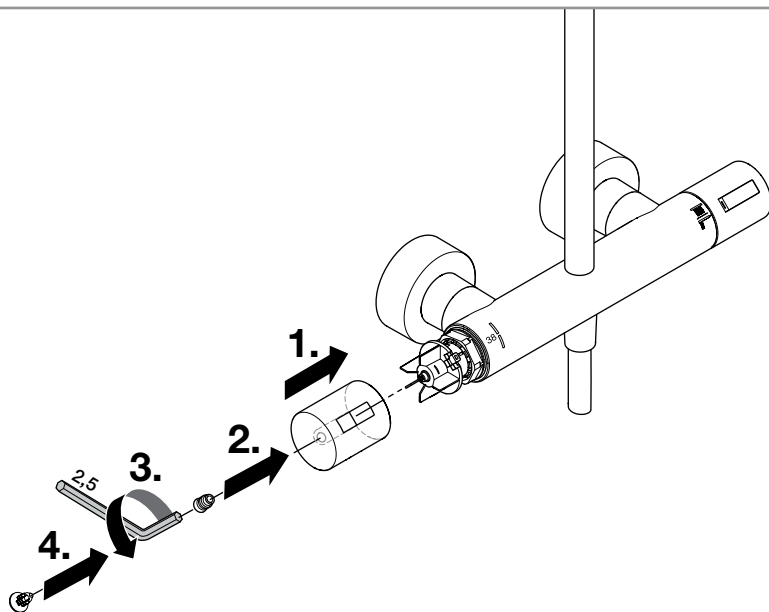
**20**  
ab



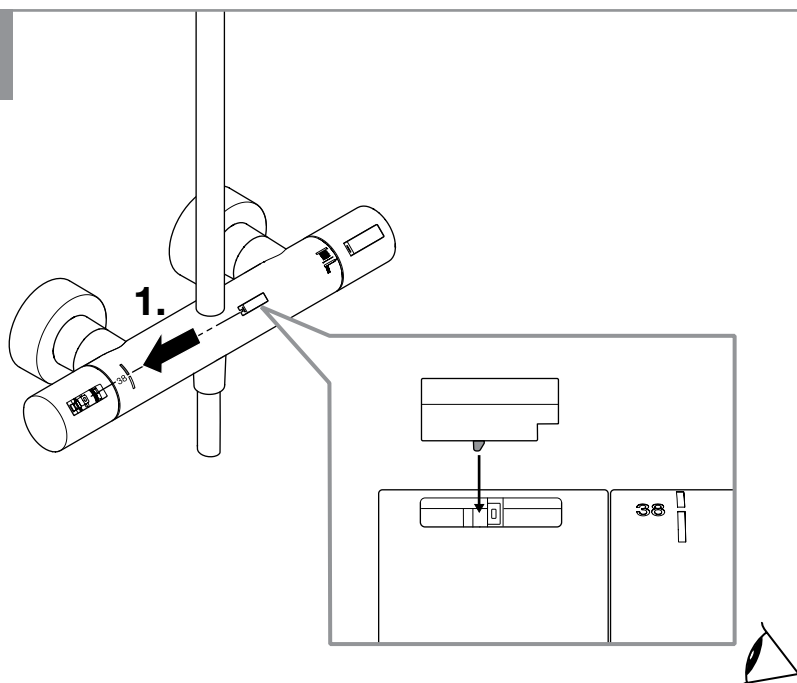




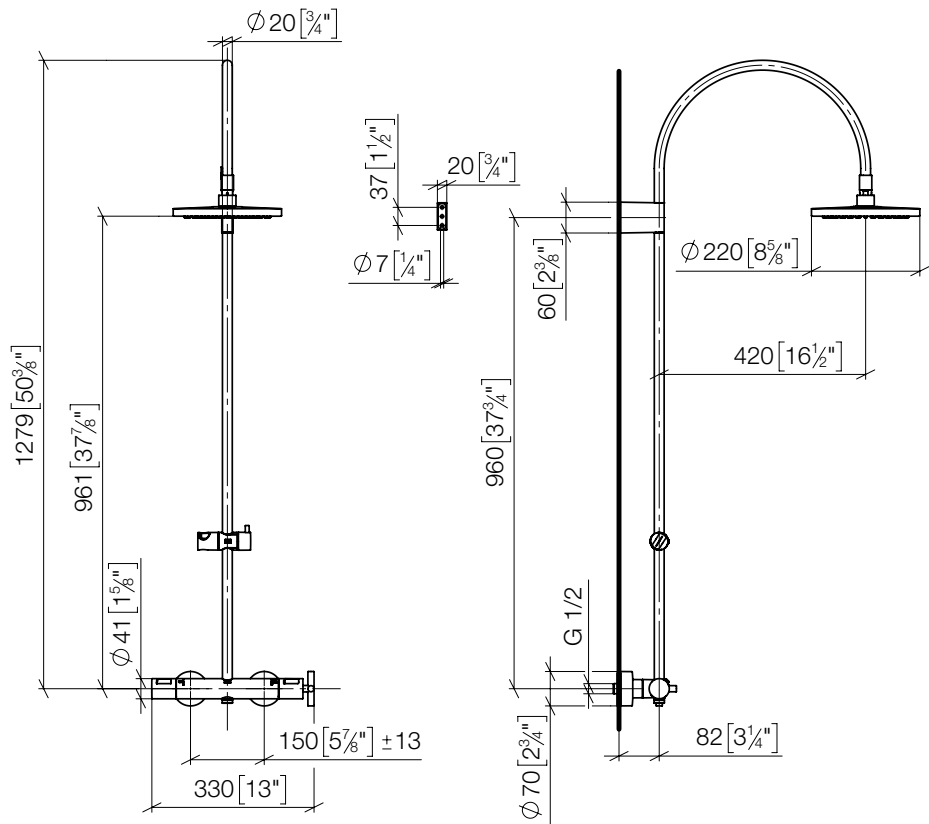
22  
ab

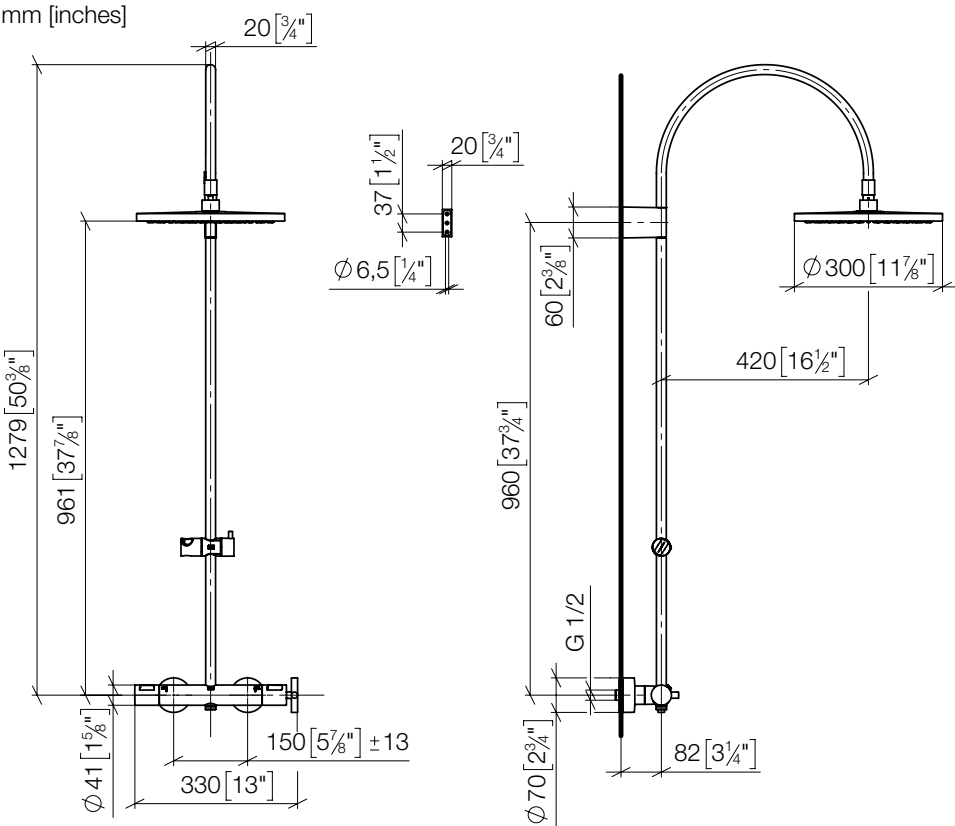


23  
ab

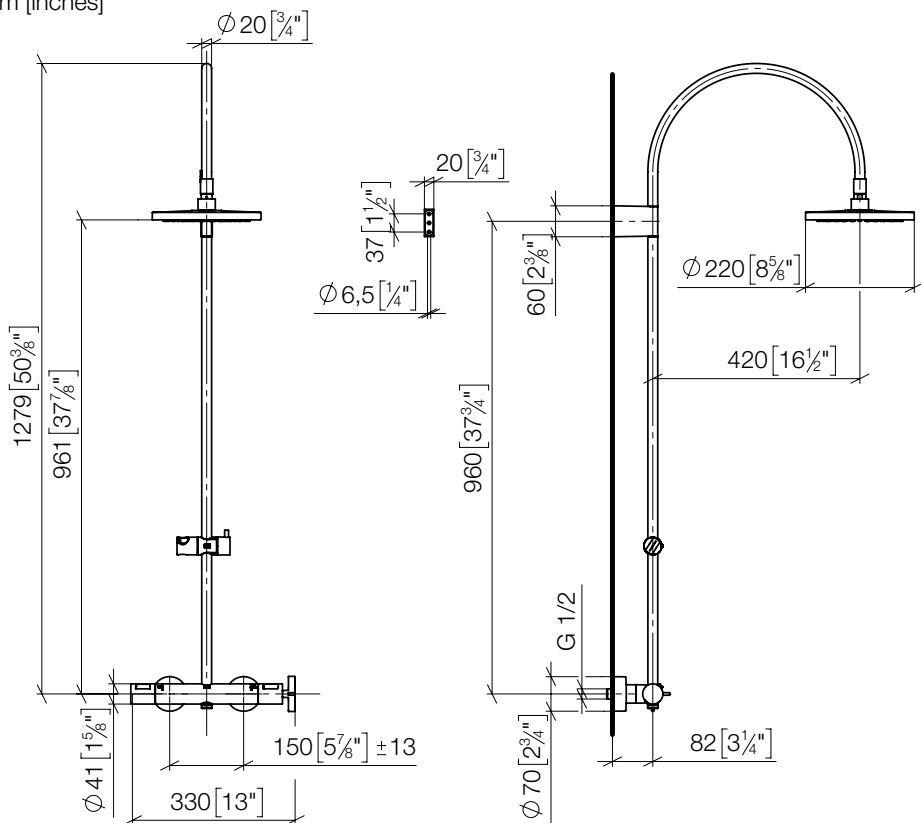


mm [inches]

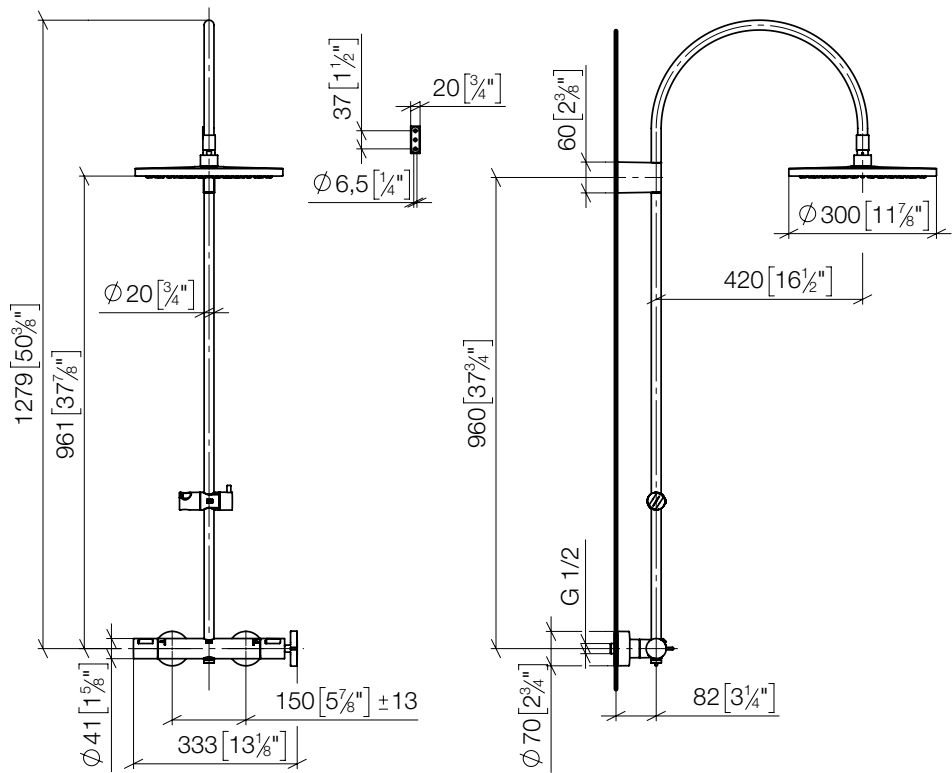




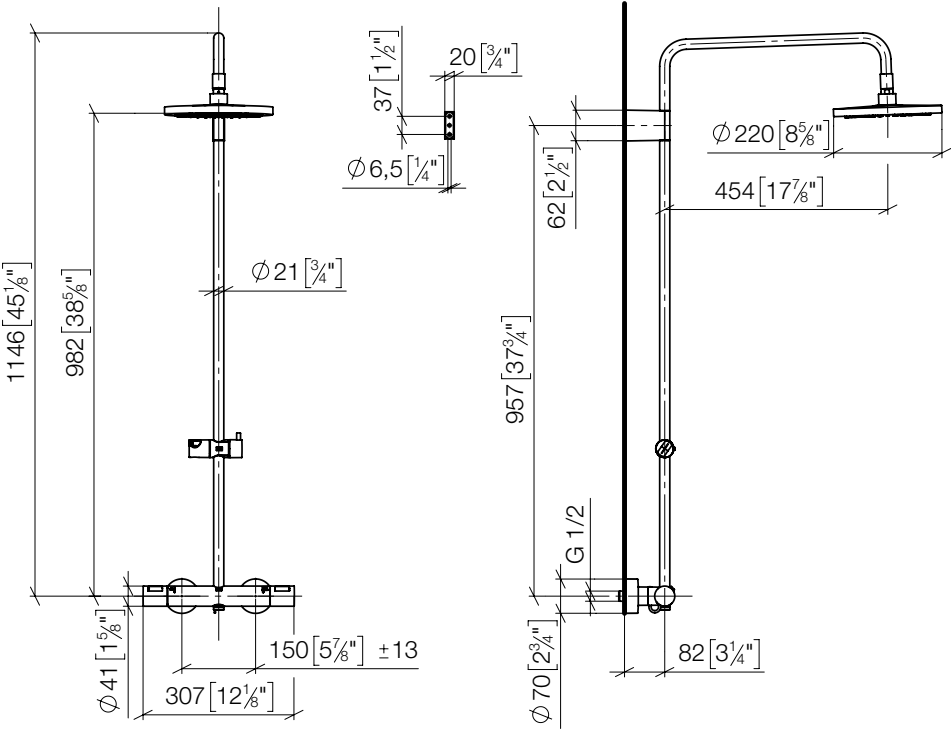
mm [inches]



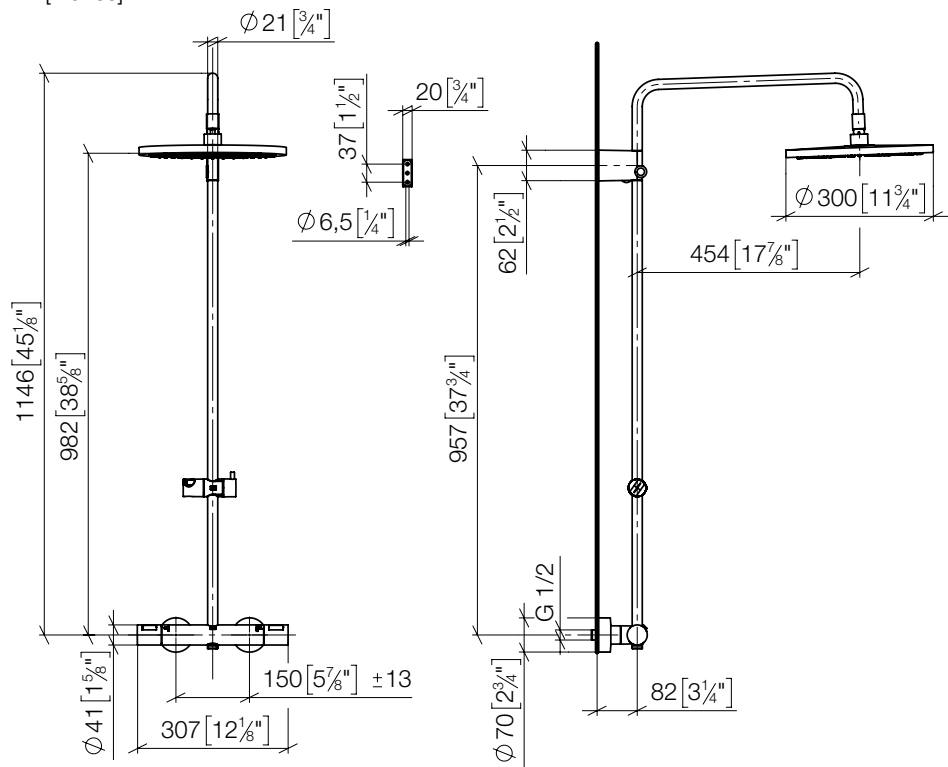
mm [inches]



mm [inches]



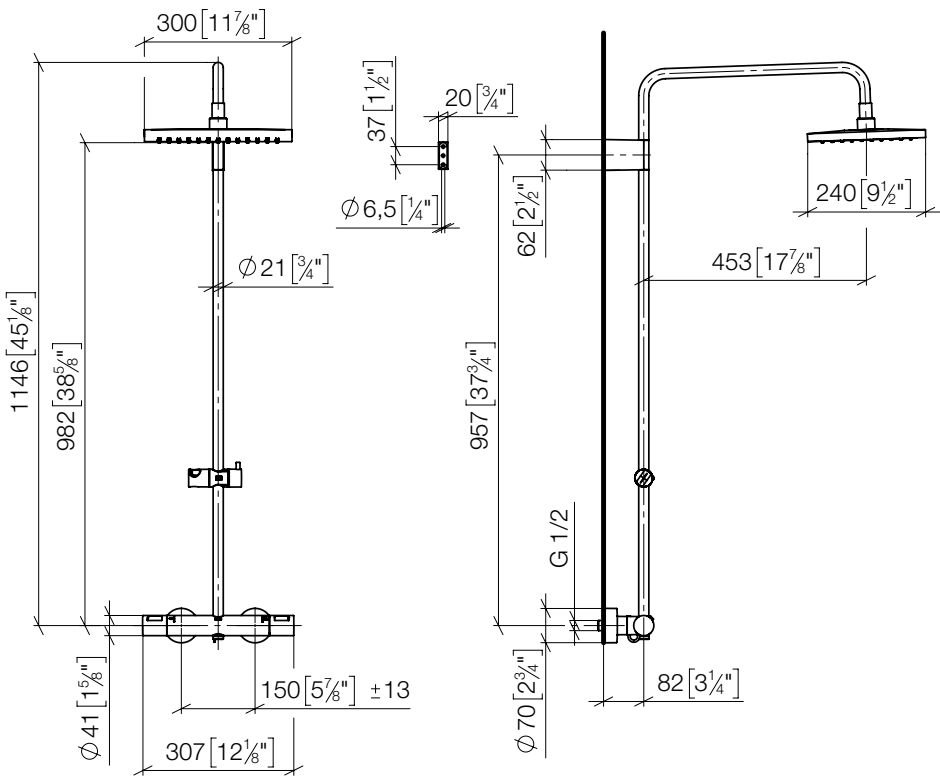
mm [inches]





34 463 980-FF 0070 / 34 463 980-00 0070  
34 464 980-FF 0070 / 34 464 980-00 0070

mm [inches]



### **GB Operating conditions**

|                                   |            |
|-----------------------------------|------------|
| Cold water temperature            | 5 – 25 °C  |
| Hot water temperature             | 55 – 65 °C |
| Recommended hot water temperature | 60 °C      |
| Thermal disinfection (5:00 mins.) | ≥ 70 °C    |
| Permissible flow pressure         | 1 – 5 bar  |
| Recommended flow pressure         | 3 bar      |

The customer has to provide a pressure reducer in the main line downstream of the water meter to comply with the noise levels according to the noise class at a resting pressure above 500 kPa / 73 psi / 5 bar.

If combined with continuous-flow heaters, the minimum flow volume of the safety shut-off has to be considered.

Observe the manufacturer's instructions for the continuous-flow heater.

### **SE Driftsförhållanden**

|                                    |            |
|------------------------------------|------------|
| Kallvattentemperatur               | 5 – 25 °C  |
| Varmvattentemperatur               | 55 – 65 °C |
| Rekommenderad varmvattentemperatur | 60 °C      |
| Termisk desinfektion (5:00 min.)   | ≥ 70 °C    |
| Tillåtet flödestryck               | 1 – 5 bar  |
| Rekommenderat flödestryck          | 3 bar      |

En trycksänkare ska monterats in i huvudledningen efter vattenmätaren för överensstämmelse med bullervärdena vid ett vilotryck över 500 kPa / 73 psi / 5 bar.

Vid en kombination med genomströmningsberedare ska den minsta flödesmängden för säkerhetsavstängningen beaktas.

Följ anvisningarna från tillverkaren av genomströmningsberedaren.



Dornbracht GmbH & Co. KG  
Köbbingser Mühle 6, D-58640 Iserlohn  
Tel. +49 2371 8899-900  
mail@dornbracht.com  
www.dornbracht.com



01 03 08 150 00 / 03.2025