

Concealed wall mounting -

---

35 003 970 90



- red brass, lead-free
- 2x female thread 1/2" connections
- dust cover
- anti-water packing
- soundproofing

Can only be combined with exposed trim parts 26  
024 661-FF / 36 013 660-FF / 36 045 660-FF / 36  
013 970-FF / 36 045 970-FF / 36 804 661-FF.

---

Recommended miscellaneous



**Extension 25 mm -**

- Can only be combined with  
exposed trim parts 36 804 661-FF.

12 179 970 90

---

Recommended miscellaneous



**Leak protection 1/2" -**

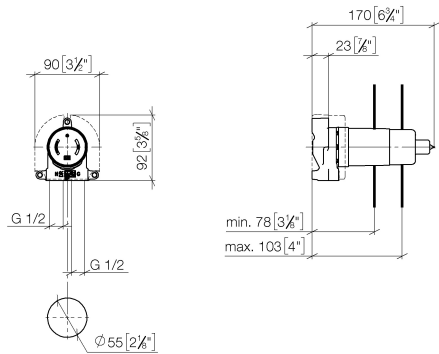
- This article is needed 2x.

12 010 970 90

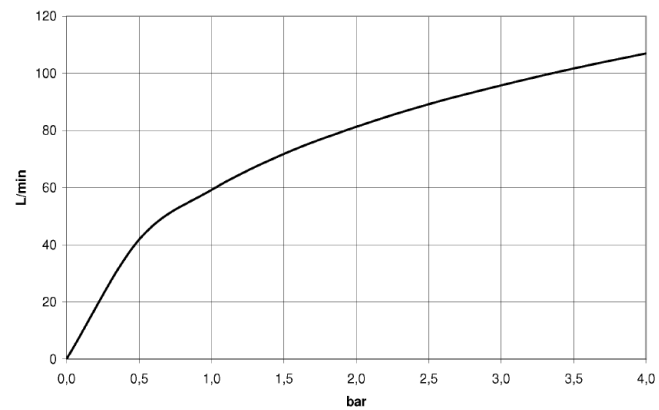
## Concealed wall mounting -

35 003 970 90

mm [inches]



Flow rate chart



## Certificates

DVGW\_DW-6512DN0127.

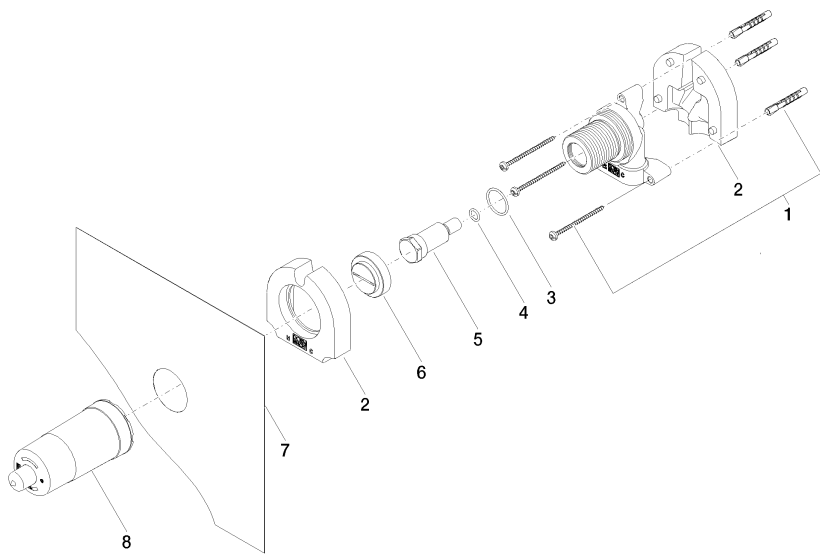
LGA\_18589.

WRAS\_2003025.

WRAS\_2101023.

# Concealed wall mounting -

35 003 970 90



## Spare parts list

| No. | Item Number        | Name        | Quantity used | Delivery time |
|-----|--------------------|-------------|---------------|---------------|
| 1   | 05 30 31 029 00 90 | fixing set  | 1             | 2             |
| 2   | 09 11 11 019 90    | accessories | 2             | 2             |
| 3   | 09 14 10 112 90    | seal        | 1             | 2             |
| 4   | 09 14 10 139 90    | seal        | 1             | 2             |
| 5   | 09 31 20 038 90    | plug        | 1             | 2             |
| 6   | 09 20 97 010 90    | cap         | 1             | 2             |
| 7   | 04 14 03 079 00 90 | gasket kit  | 1             | 2             |
| 8   | 09 21 02 178 90    | cap         | 1             | 2             |